

# M8054 17 PIECES/PIEZAS

Easy  
Facile  
Fácil

## MISSE S'/MEN'S TOPS AND JACKET

**Suggested Fabrics:** Moderate stretch knit fabrics such as Sweatshirt Fleece, Cotton Knit, Interlock, Fleece, Knitted Velour. **Contrast A:** Also Faux Leather, Suede.

**Notions: A:** For Misses'- 1½ yds. (1.4m) of Approximately 2" (5cm) Flat Lace Trim. **D:** 24" (60cm) Separating Zipper.

Sizes	S	M	L	XL	XXL	XXXL	
<b>Sizes-European</b>	34-36	38-40	42-44	46-48	50-52	54-56	

<b>A</b>							
60"*	1½	1½	1½	1⅝	1⅝	1⅝	Yd

<b>Contrast A</b>							
45", 60"***	⅝	⅝	¾	¾	¾	1	Yd

<b>B</b>							
60"*	1⅝	1⅝	1⅝	2	2¼	2¼	Yd

<b>C</b>							
60"*	1½	1½	1½	1⅝	1⅝	2	Yd

<b>Contrast C</b>							
60"*	⅝	¾	1	1⅝	1⅝	1¼	Yd

<b>D</b>							
60"*	1½	2	2	2⅝	2¼	2⅝	Yd

<b>Contrast D</b>							
60"*	⅝	¾	¾	¾	¾	¾	Yd

## FINISHED GARMENT MEASUREMENTS

A, B, C, D Bust/Chest							
	38	42	46	50	54	58	ln
A, B, C Width							
	37	41	45	49	53	57	"
D Width							
	35	39	43	47	51	55	"
Back length from base of neck:							
A, B, C							
	24	24½	25	25½	26	26½	ln
D							
	25½	26	26½	27	27½	28	"

## HAUTS ET VESTE POUR JEUNE FEMME/HOMME TOPS Y CHAQUETA PARA JÓVENES Y SEÑORAS/HOMBRES

Tailles/ Tallas	P	M	G	TG/ XG	TTG/ XXG	TTTG/ XXXG	
<b>Françaises</b>	36-38	40-42	44-46	48-50	52-54	56-58	
<b>Europeas</b>	34-36	38-40	42-44	46-48	50-52	54-56	

<b>A</b>							
150cm*	1.4	1.4	1.4	1.5	1.5	1.5	m

<b>Contraste A</b>							
115, 150cm***	0.6	0.6	0.7	0.7	0.7	1.0	m

<b>B</b>							
150cm*	1.5	1.5	1.5	1.9	2.1	2.1	m

<b>C</b>							
150cm*	1.4	1.4	1.4	1.5	1.8	1.9	m

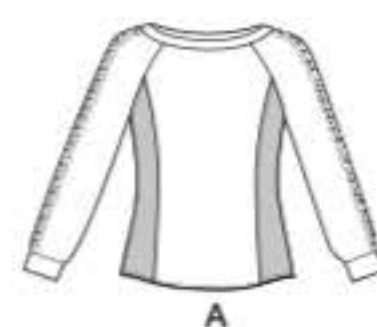
<b>Contraste C</b>							
150cm*	0.6	0.7	1.0	1.1	1.1	1.2	m

<b>D</b>							
150cm*	1.4	1.9	1.9	2.0	2.1	2.2	m

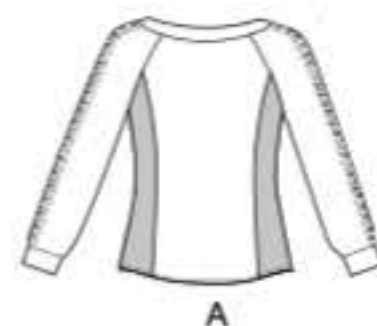
<b>Contraste D</b>							
150cm*	0.6	0.7	0.7	0.7	0.7	0.7	m

\*with nap \*\*without nap \*\*\*with or without nap  
\*con pelusa \*\*sin pelusa \*\*\*con o sin pelusa

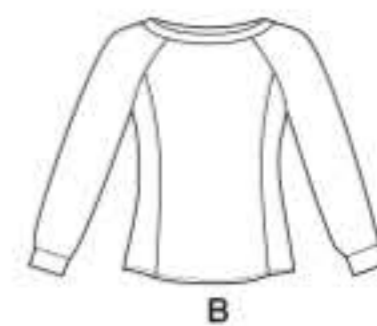
\*avecsens \*\*sans sens \*\*\*avec ou sans sens



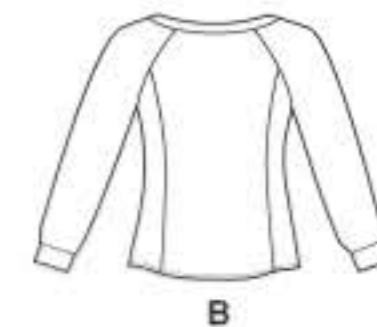
A



A



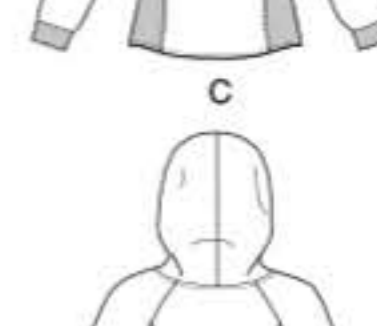
B



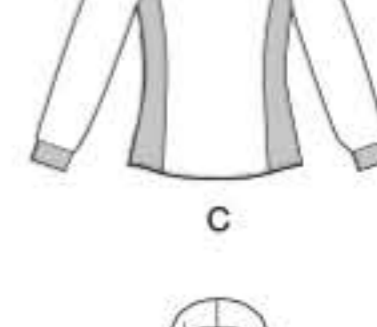
B



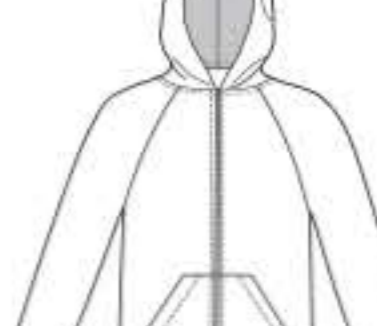
C



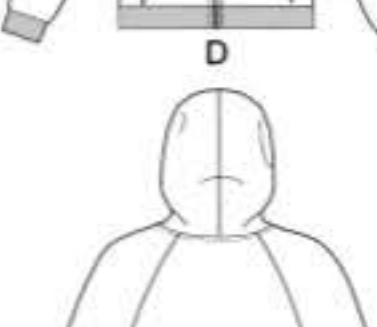
C



C



D



D

4" (10cm) OF CROSSWISE FOLDED KNIT MUST STRETCH FROM HERE  
(10cm) DE JERSEY PLIÉ SUR LE TRAVERS DOIVENT S'ÉTIRER D'ICI  
(10cm) DE TEJIDO DE PUNTO DOBLADO TRANSVERSALMENTE DEBEN ESTIRARSE DESDE ACÁ

TO HERE OR MORE  
À AU MOINS LÀ  
HASTA ACÁ O MÁS



©2020 McCall's® a CSS Industries, Inc. brand, Berwick, PA 18603. All rights reserved. Trademarks Reg. U.S. Pat. & TM Off. Marca Registrada. Sold for individual home use only and not for commercial or manufacturing purposes. www.mccallpattern.com Reserve à un usage personnel. Utilisation commerciale ou industrielle strictement interdite.



M8054/XM 1