

M8056

23 PIECES/PIEZAS

Easy
Facile
Fácil

MISSES' ROBE, BELT, TOPS, SHORTS AND PANTS

Suggested Fabrics: Light to medium weight woven fabrics such as Washed Silk, Charmeuse, Crepes, Cotton Voile.

Notions: A: 3 yds. (2.8m) of 1/8" (3mm) Piping with Cording. C: 1 1/2 yds. (1.5m) of 3/8" (1cm) Grosgrain Ribbon, Five 1/2" (13mm) Buttons. D: 3 yds. (2.8m) of 1/8" (3mm) Piping with Cording, Five 1/2" (13mm) Buttons. E: 1 yd. (1.0m) of 3/4" (2cm) Elastic. F: 1 1/2 yds. (1.4m) of 1/8" (3mm) Piping with Cording, 1 yd. (1.0m) of 3/4" (2cm) Elastic. G: 1 1/4 yds. (1.2m) of 1/8" (3mm) Piping with Cording, 1 yd. (1.0m) of 3/4" (2cm) Elastic.

Sizes	8	10	12	14	16	18	20	22	24
European	34	36	38	40	42	44	46	48	50

Robe And Belt A

45"***	3 3/4	3 3/4	3 3/8	4	4 1/8	4 3/8	4 3/8	4 1/2	4 1/2	Yd
60"***	2 5/8	2 5/8	2 3/4	2 3/4	2 3/4	2 7/8	3	3 3/8	3 3/4	"

Robe And Belt B

45"***	4 1/2	4 1/2	4 5/8	4 3/4	5	5	5 1/8	5 1/8	5 1/4	Yd
60"***	3 3/8	3 3/8	3 1/8	3 1/4	3 3/8	3 1/2	3 1/2	3 3/8	3 3/4	"

C

45"***	1 5/8	1 5/8	1 3/4	1 3/4	1 7/8	1 7/8	1 7/8	2	2	Yd
60"***	1 1/8	1 1/8	1 1/8	1 1/8	1 1/8	1 1/8	1 5/8	1 5/8	1 5/8	"

D

45"***	2	2	2	2 1/8	2 1/8	2 3/8	2 3/8	2 1/8	2 1/2	Yd
60"***	1 3/8	1 3/8	1 1/2	1 1/2	1 3/4	1 3/4	1 3/4	1 7/8	2	"

Fusible Interfacing C,D

18", 20"	3/4	3/4	3/4	7/8	7/8	7/8	7/8	7/8	7/8	Yd
----------	-----	-----	-----	-----	-----	-----	-----	-----	-----	----

E

45", 60"***	7/8	7/8	7/8	7/8	7/8	1	1	1	1	Yd
-------------	-----	-----	-----	-----	-----	---	---	---	---	----

F

45"***	2 1/4	2 1/4	2 1/4	2 1/4	2 1/4	2 1/4	2 5/8	2 5/8	2 5/8	Yd
60"***	1 1/2	1 1/2	1 1/2	1 1/8	1 7/8	1 7/8	2 1/8	2 1/8	2 1/4	"

G

45"***	2 1/8	2 1/8	2 1/8	2 1/8	2 1/8	2 3/8	2 3/8	2 1/8	2 3/8	Yd
60"***	1 1/2	1 1/2	1 1/2	1 1/2	1 7/8	1 7/8	1 7/8	2	2	"

FINISHED GARMENT MEASUREMENTS

A,B Bust	41	42	43 1/2	45 1/2	47 1/2	49 1/2	51 1/2	53 1/2	55 1/2	in
C,D Bust	36	37	38 1/2	40 1/2	42 1/2	44 1/2	46 1/2	48 1/2	50 1/2	"
E,F,G Hip	37 1/2	38 1/2	40	42	44	46	48	50	52	"

ROBE DE CHAMBRE, CEINTURE, HAUTS, SHORT ET PANTALON POUR JEUNE FEMME

BATA, CINTURÓN, TOPS, SHORT Y PANTALÓN PARA JÓVENES Y SEÑORAS

Tailles/Tallas	8	10	12	14	16	18	20	22	24
Françaises	36	38	40	42	44	46	48	50	52
Europeas	34	36	38	40	42	44	46	48	50

Robe De Chambre Et Ceinture A/ Bata Y Cinturón A

115cm***	3.5	3.5	3.6	3.7	4.0	4.0	4.0	4.2	4.2	m
150cm***	2.4	2.4	2.6	2.6	2.6	2.7	2.8	2.9	3.0	"

Robe De Chambre Et Ceinture B/ Bata Y Cinturón B

115cm***	4.2	4.2	4.3	4.4	4.6	4.6	4.7	4.7	4.8	m
150cm***	2.9	2.9	2.9	3.0	3.1	3.2	3.2	3.4	3.5	"

C

115cm***	1.5	1.5	1.6	1.6	1.8	1.8	1.8	1.9	1.9	m
150cm***	1.1	1.1	1.1	1.1	1.1	1.3	1.5	1.5	1.5	"

D

115cm***	1.9	1.9	1.9	2.0	2.2	2.2	2.2	2.2	2.3	m
150cm***	1.3	1.3	1.4	1.4	1.6	1.6	1.6	1.8	1.9	"

Entoilage Thermocollant C,D/ Entre tela Termoadhesiva C,D

46, 51cm	0.7	0.7	0.7	0.8	0.8	0.8	0.8	0.8	0.8	m
----------	-----	-----	-----	-----	-----	-----	-----	-----	-----	---

E

115, 150cm***	0.8	0.8	0.8	0.8	0.8	1.0	1.0	1.0	1.0	m
---------------	-----	-----	-----	-----	-----	-----	-----	-----	-----	---

F

115cm***	2.1	2.1	2.1	2.1	2.1	2.1	2.4	2.4	2.4	m
150cm***	1.4	1.4	1.4	1.8	1.8	1.8	2.0	2.0	2.1	"

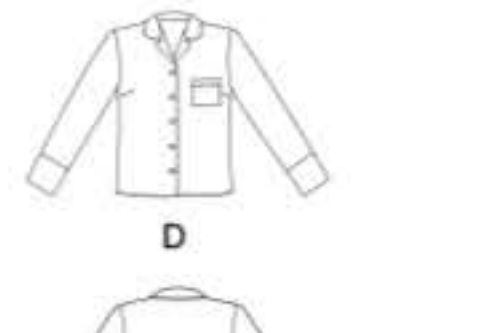
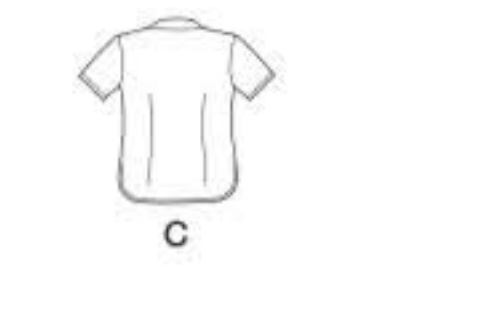
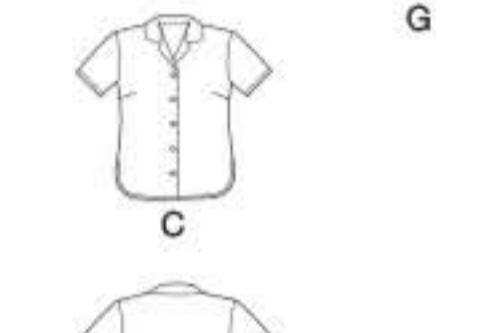
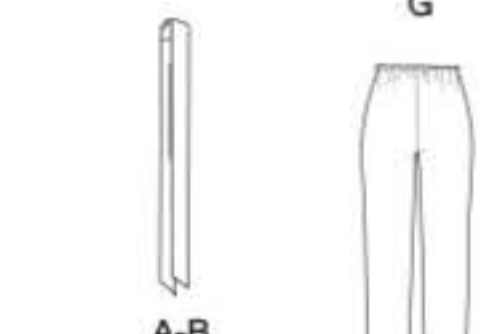
G

115cm***	2.0	2.0	2.0	2.0	2.0	2.2	2.2	2.2	2.2	m
150cm***	1.4	1.4	1.4	1.4	1.8	1.8	1.8	1.9	1.9	"

*with nap **without nap ***with or without nap

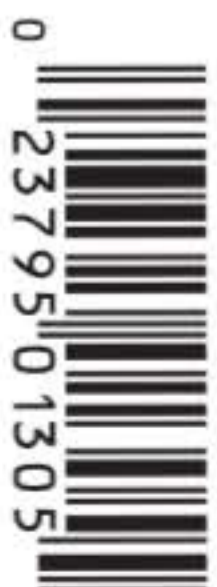
*con pelusa **sin pelusa ***con o sin pelusa

*avecsens **sans sens ***avec ou sans sens



©2020 McCall's® a CSS Industries, Inc. brand, Berwick, PA 18603. All rights reserved. Trademarks Reg. U.S. Pat. & TM Off. Marca Registrada. Sold for individual home use only and not for commercial or manufacturing purposes. www.mccallpattern.com Reserve à un usage personnel. Utilisation commerciale ou industrielle strictement interdite.

MADE IN U.S.A. FABRIQUE AUX ETATS-UNIS.



M8056/B5

1