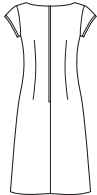


9 PIECES/PIEZAS

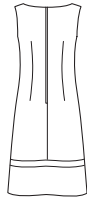
Métrages et instructions de couture en Français à l'intérieur de l'enveloppe.



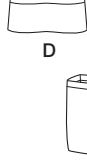
A



B



C



D



E

MISSES' SEVEN SIZES IN ONE

Sizes	10	12	14	16	18	20	22	
European Size	36	38	40	42	44	46	48	
Bust	32½	34	36	38	40	42	44	In
Waist	25	26½	28	30	32	34	37	"
Hips	34½	36	38	40	42	44	46	"
Back-neck to waist	16	16¼	16½	16¾	17	17¼	17½	"

A								
45***	1%	2%	2%	2%	2½	2%	2%	Yd
60***	1%	1%	1%	1%	1½	1½	1½	"

Interfacing- ¾ yd. of 20" to 25" lightweight fusible

B,C								
45***	1%	2%	2%	2½	2%	2%	2%	Yd
60***	1%	1%	1%	1%	1%	1%	1%	"

D								
45***	1%	2	2%	2%	2¼	2½	2½	Yd
60***	1%	1%	1%	1%	1%	1%	1%	"

Contrast Band- ½ yd. of 45" or 60"***

B,C,D Interfacing- 1 yd. of 20" to 25" lightweight fusible

E (H 13" X W 15")- 1 yd. of 45" or 60"***; **Lining**- 1 yd. of 45"***; **Interfacing**- 1 yd. of 22" to 25" mediumweight fusible

GARMENT MEASUREMENTS

A,B,C,D Bust	36½	38	40	42	44	46	48	In
Finished back length from base of neck:								
A,B,C,D	37	37¼	37½	37¾	38	38¼	38½	In
A,B,C,D Width	40½	42	44	46	48	50	52	"

SUGGESTED FABRICS

Cotton and Cotton Blends, Laundered Cottons, Chambray, Lightweight Wool and Wool Blends, Crepe De Chine, Laundered Silks-Rayons, Silks and Silk Types, Brocade, Shantung. E in Canvas, Twill, Sateen, Pique, Poplin. Allow extra fabric for matching plaids or stripes.

REQUIREMENTS: A,B,C,D: One 20" zipper, hook and eye.

C: Ribbon- 3 yd. of 1½" wide. D: Ribbon- 1¾ yd. of 1½" wide.

E: Webbing- 3½ yd. of 1¼", Ribbon- 1¾ yd. of ¾" wide, Cardboard- 15¾" x 4¾".

*without nap **with nap ***with or without nap

JEUNE FEMME; PATRON SEPT TAILLES

SEÑORITAS: PATRÓN SIETE TALLAS

Tailles / Tallas	10	12	14	16	18	20	22	
Tailles Françaises	38	40	42	44	46	48	50	
Tallas Europeas	36	38	40	42	44	46	48	
Poitrine / Busto	83	87	92	97	102	107	112	cm
Taille / Cintura	64	67	71	76	81	89	94	"
Hanches / Caderas	88	92	97	102	107	112	117	"
Dos (encolure à Taille) / Espalda (escote a cintura)	40.5	41.5	42	42.5	43	44	44	cm

A								
45***	1.70	2.10	2.10	2.10	2.30	2.30	2.40	m
60***	1.30	1.30	1.30	1.30	1.30	1.30	1.30	"

Entoilage- 0.30m de 51cm à 64cm, léger, thermocollant/**Entretela**- 0.30m de 51cm à 64cm, ligera, adhesiva

B,C								
45***	1.40	2.20	2.20	2.20	2.40	2.60	2.60	m
60***	1.40	1.40	1.40	1.40	1.40	1.40	1.40	"

D								
45***	1.30	1.90	1.90	1.90	2.10	2.20	2.30	m
60***	1.20	1.20	1.20	1.20	1.20	1.30	1.30	"

Bande Contrastante - 0.50m de 115cm ou 150cm**

Banda Contrastante - 0.50m de 115cm ó 150cm**

B,C,D Entoilage- 0.90m de 51cm à 64cm, léger, thermocollant

B,C,D Entretela- 0.90m de 51cm à 64cm, ligera, adhesiva

E (33cm de haut X 38cm de large)-1.00m de 115cm ou 150cm**; **Doublure**- 1.00m de 115cm*; **Entoilage**-1.00m de 55cm à 64cm moyen, thermocollant / **E (33cm de alto X 38cm de ancho)**- 1.00m de 115cm ó 150cm**; **Forro**-1.00m de 115cm*; **Entretela**-1.00m de 55cm à 64cm mediana, adhesiva

TISSUS SUGGÉRÉS: Coton et Cottonnades, Cotons prélavés, Chambray, Laine et Lainages légers, Crêpe de Chine, Soies/Rayonnes prélavées, Soies et Tissus Soyeux, Brocart, Shantung. E en Grosse Toile, Twill, Satinette, Piqué, Popeline fine. Prévoyez davantage de tissu pour raccorder les écossois ou les rayures.

MERCERIE

A,B,C,D: Une glissière de 50cm, une agrafe. C: Ruban- 2.80m de 3.8cm de large.

D: Ruban- 1.50m de 3.8cm de large. E: Sangle- 3.20m de 3.2cm, Ruban- 1.20m de 2.2cm de large, Carton- 40cm x 12cm

TELAS SUGERIDAS: Algodón y Mezclas de Algodones, Algodones lavados, Chambray, Lanas y Mezclas de Lanas, Crepé de China, Sedas/Rayones lavados, Sedas y Telas Sedosas, Brocado, Shantung. E en Tela Gruesa, Twill, Satén de Algodón, Piqué, Popelina fina. Se necesita tela extra para casar cuadros o rayas.

MERCERIA: A,B,C,D: Una cremallera de 50cm, un corchete. C: Cinta- 2.80m de 3.8cm de ancho. D: Cinta- 1.50m de 3.8cm de ancho. E: Correa- 3.20m de 3.2cm, Cinta- 1.20m de 2.2cm de ancho, Cartón- 40cm x 12cm

*sans sens **avec sens ***avec ou sans sens

*sin pelusa **con pelusa ***con o sin pelusa

6095
 SIZE / TAILLE / TALLA
 U.S. 10-22
 FR. 38-50
A EURO. 36-48