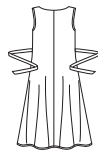
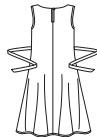


13 PIECES/PIEZAS

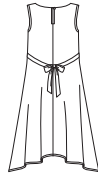
Métrages et instructions de couture en Français à l'intérieur de l'enveloppe.



A



B



C



D

MISSES' SEVEN SIZES IN ONE

| | | | | | | | | |
|--------------------|-----|-----|-----|-----|-----|----|-----|----|
| Sizes | 8 | 10 | 12 | 14 | 16 | 18 | 20 | |
| European Size | 34 | 36 | 38 | 40 | 42 | 44 | 46 | |
| Bust | 31½ | 32½ | 34 | 36 | 38 | 40 | 42 | In |
| Waist | 24 | 25 | 26½ | 28 | 30 | 32 | 34 | " |
| Hip | 33½ | 34½ | 36 | 38 | 40 | 42 | 44 | " |
| Back-neck to waist | 15¾ | 16 | 16¼ | 16½ | 16¾ | 17 | 17¼ | In |

| | | | | | | | | |
|-------|----|----|----|----|----|----|----|----|
| A | | | | | | | | |
| 45*** | 2½ | 2½ | 2½ | 2½ | 2¾ | 2¾ | 3½ | Yd |
| 60*** | 2½ | 2½ | 2½ | 2½ | 2½ | 2½ | 2½ | " |

Interfacing- ¾ yd. of 20" to 25" lightweight fusible, such as Pellon®

| | | | | | | | | |
|-------|----|----|----|----|----|----|----|----|
| B | | | | | | | | |
| 45*** | 2¼ | 2¼ | 2¼ | 2½ | 2½ | 2½ | 2½ | Yd |
| 60*** | 2¼ | 2¼ | 2¼ | 2¼ | 2½ | 2½ | 2½ | " |

Interfacing- ¾ yd. of 20" to 25" lightweight fusible, such as Pellon®

| | | | | | | | | |
|-------|----|----|----|----|----|----|----|----|
| C | | | | | | | | |
| 45*** | 2½ | 2½ | 2½ | 2½ | 2½ | 2½ | 2¾ | Yd |
| 60*** | 2½ | 2½ | 2½ | 2½ | 2½ | 2½ | 2½ | " |

Interfacing- ¾ yd. of 20" to 25" lightweight fusible, such as Pellon®

| | | | | | | | | |
|-------|----|----|----|----|----|----|----|----|
| D | | | | | | | | |
| 45*** | 2½ | 2½ | 2½ | 2¾ | 2¾ | 2¾ | 2¾ | Yd |
| 60*** | 2¼ | 2¼ | 2¼ | 2¼ | 2¼ | 2½ | 2½ | " |

Interfacing- ½ yd. of 20" to 25" lightweight fusible, such as Pellon®

GARMENT MEASUREMENTS

| | | | | | | | | |
|---|-----|-----|-----|-----|-----|----|-----|----|
| A,B,C,D,Bust | 36½ | 37½ | 39 | 41 | 43 | 45 | 47 | In |
| Finished back length from base of neck: | | | | | | | | |
| A | 39¾ | 40 | 40¼ | 40½ | 40¾ | 41 | 41¼ | In |
| B,C,D | 35¾ | 36 | 36¼ | 36½ | 36¾ | 37 | 37¼ | " |

SUGGESTED FABRICS

Batiks, Chambray, Cotton Lawn, Cotton Types, Crepe, Crepe De Chine, Gauze, Jacquards, Linen Types, Pique, Silky Types, Ponte. Allow extra fabric for matching plaids or stripes.

REQUIREMENTS

Thread. **A,B,C:** One pkg. of ½" wide single fold bias tape.

B,C: One ½" button, 1¾" length of elastic cord.

JEUNE FEMME: PATRON SEPT TAILLES

SEÑORITAS: PATRÓN SIETE TALLAS

| | | | | | | | | |
|--|----|------|------|----|------|-----|-----|----|
| Tailles / Tallas | 8 | 10 | 12 | 14 | 16 | 18 | 20 | |
| Tailles Françaises | 36 | 38 | 40 | 42 | 44 | 46 | 48 | |
| Tallas Europeas | 34 | 36 | 38 | 40 | 42 | 44 | 46 | |
| Poitrine / Busto | 80 | 83 | 87 | 92 | 97 | 102 | 107 | cm |
| Taille / Cintura | 61 | 64 | 67 | 71 | 76 | 81 | 89 | " |
| Hanches / Caderas | 85 | 88 | 92 | 97 | 102 | 107 | 112 | " |
| Dos (encolure à Taille) / Espalda (escote a cintura) | 40 | 40.5 | 41.5 | 42 | 42.5 | 43 | 44 | cm |

| | | | | | | | | | |
|---|---------|------|------|------|------|------|------|------|---|
| A | 115cm** | 2.30 | 2.30 | 2.30 | 2.40 | 2.50 | 2.60 | 2.80 | m |
| | 150cm** | 2.30 | 2.30 | 2.30 | 2.30 | 2.30 | 2.30 | 2.30 | " |

Entoilage- 0.40m de 51cm à 64cm léger thermocollant tels que Pellon®

Entretela- 0.40m de 51cm à 64cm légère adhesiva como Pellon®

| | | | | | | | | | |
|---|---------|------|------|------|------|------|------|------|---|
| B | 115cm** | 2.10 | 2.10 | 2.10 | 2.10 | 2.20 | 2.30 | 2.30 | m |
| | 150cm** | 2.00 | 2.10 | 2.10 | 2.10 | 2.10 | 2.10 | 2.10 | " |

Entoilage- 0.40 de 51cm à 64cm léger thermocollant tel que Pellon®

Entretela- 0.40m de 51cm à 64cm léger adhesiva como Pellon®

| | | | | | | | | | |
|---|---------|------|------|------|------|------|------|------|---|
| C | 115cm** | 2.30 | 2.30 | 2.30 | 2.30 | 2.30 | 2.40 | 2.50 | m |
| | 150cm** | 2.10 | 2.10 | 2.20 | 2.20 | 2.20 | 2.20 | 2.20 | " |

Entoilage- 0.40 de 51cm à 64cm léger thermocollant tel que Pellon®

Entretela- 0.40m de 51cm à 64cm léger adhesiva como Pellon®

| | | | | | | | | | |
|---|---------|------|------|------|------|------|------|------|---|
| D | 115cm** | 2.40 | 2.40 | 2.40 | 2.50 | 2.50 | 2.50 | 2.50 | m |
| | 150cm** | 2.00 | 2.00 | 2.10 | 2.10 | 2.10 | 2.10 | 2.10 | " |

Entoilage- 0.40 de 51cm à 64cm léger thermocollant tel que Pellon®

Entretela- 0.40m de 51cm à 64cm léger adhesiva como Pellon®

TISSUS SUGGÉRÉS: Batiks, Chambray, Coton de linon, Cotonnades, Crêpe, Crêpe de Chine, Gaze, Soie damassée, Mélanges de lin, Piqué, Tissus soyeux, Jersey Ponte. Prévoyez davantage de tissu pour raccorder les écossais ou les rayures.

MERCERIE

Fil. **A,B,C:** un paquet de ruban de biais simple de 1.3cm de large.

B,C: un bouton de 1.3cm, un morceau de cordelette élastique de 4.5cm de long.

TELAS SUGERIDAS

Batiks, Chambray, Algodón de linón, Mezclas de algodones, Crepé, Crepé de China, Gasa, Seda adamascada, Mezclas de lino, Pique, Telas sedosas, Mallas Ponte. Se necesita tela adicional para casar cuadros o rayas.

MERCERÍA

Hilo. **A,B,C:** un paquete de cinta de bias de 1.3cm de ancho.

B,C: un botón de 1.3cm, un pedazo de cordón elástico de 4.5cm de largo.

*without nap **with nap ***with or without nap

*sans sens **avec sens ***avec ou sans sens

*sin pelusa **con pelusa ***con o sin pelusa

6340
 SIZE / TAILLE / TALLA
 U.S. 8-20
 FR. 36-48
 EURO. 34-46
A