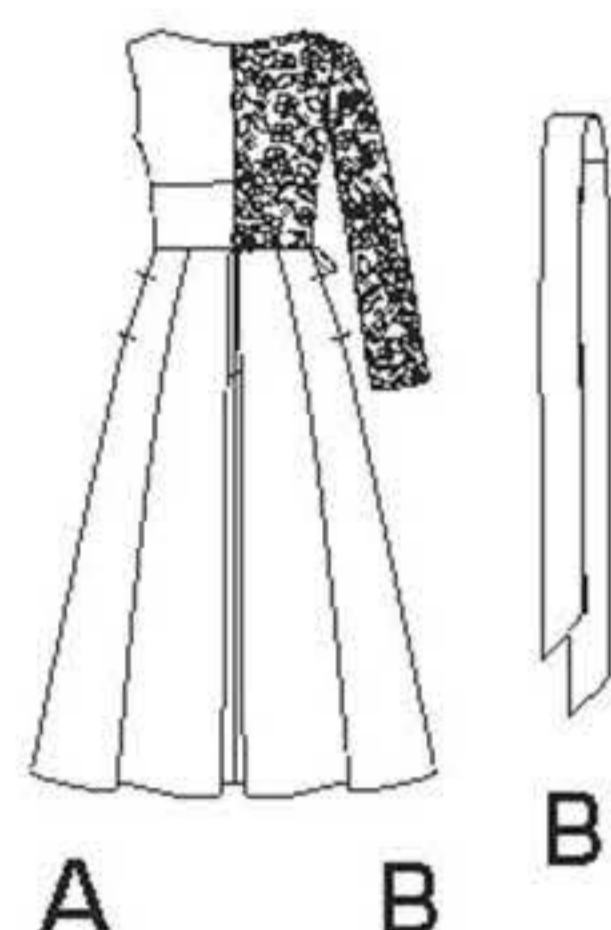
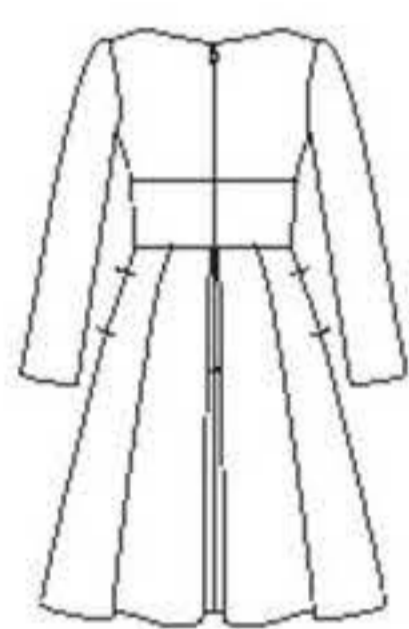


19 PIECES/PIEZAS

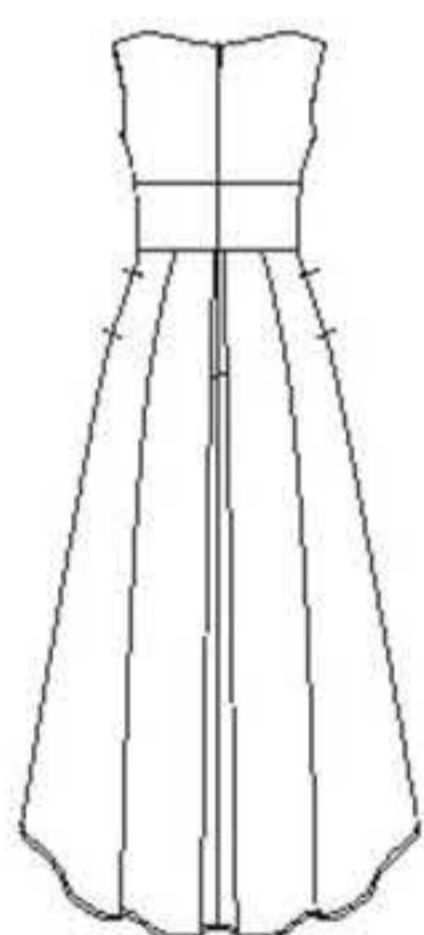
Medidas e instrucciones en Español en el interior del patrón.



A B



C



D

MISSES' SIX SIZES IN ONE

Sizes	8	10	12	14	16	18	
European Sizes	34	36	38	40	42	44	
Bust	31½	32½	34	36	38	40	In
Waist	24	25	26½	28	30	32	"
Hips	33½	34½	36	38	40	42	"
Back-neck to waist	15¾	16	16¼	16½	16¾	17	"

A,B- cut crosswise

45" or 60"***	3½	3½	3½	3⅝	3⅝	3⅝	Yd
---------------	----	----	----	----	----	----	----

Lining 45"*	¾	¾	¾	¾	¾	¾	Yd
-------------	---	---	---	---	---	---	----

Interfacing- 1 yd. of 20" to 25" lightweight fusible, such as Pellon®

B Bodice and Midriff Overlay and Sleeves- cut crosswise

60"***	1	1	1	1⅛	1⅛	1⅛	Yd
--------	---	---	---	----	----	----	----

Sash- ½ yd. of 45" to 60"***

45"***	3½	3½	3½	3⅝	3⅝	3¾	Yd
--------	----	----	----	----	----	----	----

60"***	2¾	2¾	2¾	2¾	2¾	2⅞	"
--------	----	----	----	----	----	----	---

C,D Lining 45"*	⅞	⅞	1	1	1	1⅛	Yd
-----------------	---	---	---	---	---	----	----

Interfacing- 1 yd. of 20" to 25" lightweight fusible, such as Pellon®

45"***	4⅛	4⅛	4⅛	4¼	4⅜	4½	Yd
--------	----	----	----	----	----	----	----

60"***	3¼	3¼	3⅜	3½	3⅝	3⅞	"
--------	----	----	----	----	----	----	---

45"***	4⅛	4⅛	4⅛	4¼	4⅜	4½	Yd
--------	----	----	----	----	----	----	----

60"***	3¼	3¼	3⅜	3½	3⅝	3⅞	"
--------	----	----	----	----	----	----	---

GARMENT MEASUREMENTS

A,B,C,D Bust	34½	35½	37	39	41	43	In
--------------	-----	-----	----	----	----	----	----

Finished back length from base of neck:

A,B	45¼	45½	45¾	46	46¼	46½	In
-----	-----	-----	-----	----	-----	-----	----

C	33¾	34	34¼	34½	34¾	35	"
---	-----	----	-----	-----	-----	----	---

D	50¾	51	51¼	51½	51¾	52	"
---	-----	----	-----	-----	-----	----	---

SUGGESTED FABRICS

Brocade, Chintz, Crepe Back Satin, Damask, Dupioni, Sateen, Satin, Shantung, Taffeta. **A,B** also in Border Printed Fabrics. **B Bodice and Midriff Overlay and Sleeves** in lace. Allow extra fabric for matching plaids or stripes.

REQUIREMENTS: Thread, one 22" invisible zipper.

*without nap **with nap ***with or without nap

JEUNE FEMME: PATRON SIX TAILLES

Tailles	8	10	12	14	16	18	
Tailles Françaises	36	38	40	42	44	46	
Poitrine	80	83	87	92	97	102	cm
Taille	61	64	67	71	76	81	"
Hanches	85	88	92	97	102	107	"
Dos (encolure à Taille)	40	40.5	41.5	42	42.5	43	cm

A,B-Coupés dans la largeur

150cm / 150cm**	3.10	3.20	3.20	3.30	3.30	3.40	m
-----------------	------	------	------	------	------	------	---

Doublure 115cm*	0.60	0.60	0.70	0.70	0.70	0.70	m
------------------------	------	------	------	------	------	------	---

Entoilage- 0.90m de 51cm à 64cm, léger, thermocollant tel que Pellon®

B Dessus-du-Corsage et de la Ceinture et Manches - coupés dans la largeur

150cm**	0.90	0.90	1.00	1.00	1.00	1.10	m
---------	------	------	------	------	------	------	---

Grande Ceinture- 0.50m de 115cm à 150cm**

115cm**	3.20	3.20	3.20	3.30	3.30	3.40	m
---------	------	------	------	------	------	------	---

150cm**	2.50	2.50	2.50	2.50	2.50	2.60	"
---------	------	------	------	------	------	------	---

C,D Doublure 115cm*	0.80	0.80	0.90	0.90	0.90	1.00	m
---------------------	------	------	------	------	------	------	---

Entoilage- 0.90m de 51cm à 64cm, léger, thermocollant tel que Pellon®

115cm**	3.70	3.70	3.80	3.90	3.90	4.10	m
---------	------	------	------	------	------	------	---

150cm**	3.00	3.00	3.10	3.20	3.30	3.30	"
---------	------	------	------	------	------	------	---

115cm**	3.70	3.70	3.80	3.90	3.90	4.10	m
---------	------	------	------	------	------	------	---

150cm**	3.00	3.00	3.10	3.20	3.30	3.30	"
---------	------	------	------	------	------	------	---

MESURES DES VÊTEMENTS

A,B,C,D Poitrine	87.5	90	94	99	104	110	cm
------------------	------	----	----	----	-----	-----	----

Longueur finie du dos depuis la base du cou:

A,B	116	116	116	117	117	118	cm
-----	-----	-----	-----	-----	-----	-----	----

C	86	86.5	87	87.5	88.5	89	"
---	----	------	----	------	------	----	---

D	129	130	130	131	131	132	"
---	-----	-----	-----	-----	-----	-----	---

TISSUS SUGGÉRÉS

Brocart, Chintz, Crêpe de Satin, Damas, Soie Dupioné, Satinette, Satin, Shantung, Taffetas. **A,B** En tissus à bordure imprimée aussi. **B Dessus du Corsage et de la Ceinture et Manches** en dentelle. Prévoyez davantage de tissu pour raccorder les écossais ou les rayures.

MERCERIE: Fil, une glissière invisible de 55cm.

*sans sens **avec sens ***avec ou sans sens

6526
 SIZE / TAILLE / TALLA
 U.S. 8-18
 FR. 36-46
 EURO. 34-44
A