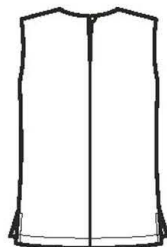
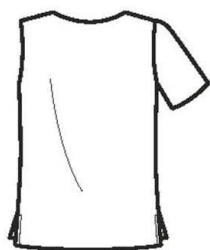


13 PIECES/PIEZAS
Métrages et instructions
de couture en Français à
l'intérieur de l'enveloppe.



A



B

C

MISSSES' SEVEN SIZES IN ONE

Sizes	10	12	14	16	18	20	22	
European Size	36	38	40	42	44	46	48	
Bust	32½	34	36	38	40	42	44	In
Waist	25	26½	28	30	32	34	37	"
Hip	34½	36	38	40	42	44	46	"
Back-neck to waist								
	16	16¼	16½	16¾	17	17¼	17¾	In

A	45"***	1⅞	1⅞	1½	1½	1⅝	1⅝	1¾	Yd
	60"***	1⅞	1⅞	1⅞	1⅞	1⅞	1⅞	1⅞	"

Interfacing- ¾ yd. of 20" to 25" lightweight fusible, such as Pellon®

B	45"***	1⅝	1⅝	1⅝	1⅝	1¾	1¾	1¾	Yd
	60"***	1⅞	1⅞	1⅞	1⅞	1¼	1¼	1¼	"

Interfacing- ⅞ yd. of 20" to 25" lightweight fusible, such as Pellon®

C	45"***	1⅝	1⅝	1⅝	1¾	1¾	1¾	1¾	Yd
	60"***	1¼	1¼	1¼	1¼	1¼	1¼	1¼	"

Interfacing- ½ yd. of 20" to 25" lightweight fusible, such as Pellon®

GARMENT MEASUREMENTS

A,B,C Bust	37	38½	40½	42½	44½	46½	48½	In
Finished back length from base of neck:								
A,B,C	23½	23¾	24	24¼	24½	24¾	25	In

SUGGESTED FABRICS

Charmeuse, Challis, Cotton Types, Crepe, Linen Types, Silky Types.
Allow extra fabric for matching plaids or stripes.

REQUIREMENTS

Thread. **A:** One ⅜" button.

*without nap **with nap ***with or without nap

JEUNE FEMME: PATRON SEPT TAILLES / SEÑORITAS: PATRÓN SIETE TALLAS

Tailles / Tallas	10	12	14	16	18	20	22	
Tailles Françaises	38	40	42	44	46	48	50	
Tallas Europeas	36	38	40	42	44	46	48	
Poitrine / Busto	83	87	92	97	102	107	112	cm
Taille / Cintura	64	67	71	76	81	89	94	"
Hanches /Caderas	88	92	97	102	107	112	117	"
Dos (encolure à Taille) / Espalda (escote a cintura)								
	40.5	41.5	42	42.5	43	44	44	cm

A

115cm**	1.10	1.30	1.30	1.30	1.50	1.50	1.50	m
150cm**	1.00	1.00	1.00	1.00	1.00	1.00	1.10	"

Entoilage-0.70m de 51cm à 64cm léger, thermocollant, tel que Pellon®

Entretela-0.70m de 51cm a 64cm ligera, adhesiva, como Pellon®

B

115cm**	1.50	1.50	1.50	1.50	1.50	1.60	1.60	m
150cm**	1.00	1.10	1.10	1.10	1.10	1.10	1.10	"

Entoilage-0.80m de 51cm à 64cm léger thermocollant, tel que Pellon®

Entretela-0.80m de 51cm a 64cm ligera, adhesiva, como Pellon®

C

115cm**	1.50	1.50	1.50	1.50	1.50	1.60	1.60	m
150cm**	1.10	1.10	1.10	1.10	1.10	1.10	1.10	"

Entoilage-0.40m de 51cm à 64cm léger thermocollant, tel que Pellon®

Entretela-0.40m de 51cm a 64cm ligera, adhesiva, como Pellon®

TISSUS SUGGÉRÉS

Charmeuse, Étamine, Cotonnades, Crêpe, Toile de Lin, Tissus Soyeux.
Prévoyez davantage de tissu pour raccorder les écossais ou les rayures.

MERCERIE

Fil. **A:** Un bouton de 1cm.

TELAS SUGERIDAS

Charmeuse, Chali, Mezclas de Algodones, Crepé, Tela de Lino, Telas Sedosas. Se necesita tela extra para casar cuadros o rayas.

MERCERÍA

Hilo. **A:** Un botón de 1cm.

*sans sens **avec sens ***avec ou sans sens

*sin pelusa **con pelusa ***sin o con pelusa

6543
SIZE / TAILLE / TALLA
U.S. 10-22
FR. 38-50
A EURO. 36-48