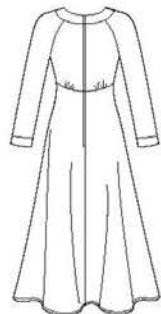


**13 PIECES/PIEZAS**  
Medidas e instrucciones  
de costura en Español  
en el interior del patrón.



A



C

B

### MISSES' SEVEN SIZES IN ONE

Sizes	6	8	10	12	14	16	18	
European Sizes	32	34	36	38	40	42	44	
Bust	30½	31½	32½	34	36	38	40	In
Waist	23	24	25	26½	28	30	32	"
Hips	32½	33½	34½	36	38	40	42	"
Back-neck to waist	15½	15¾	16	16¼	16½	16¾	17	"

**A,B,C Interfacing-** ⅜ yd. of 20" to 25" lightweight fusible, such as Pellon®

**A**

45***	3⅝	3¾	3¾	3¾	3¾	3¾	3¾	Yd
60***	2⅝	2⅝	2⅝	2⅝	2⅝	2⅝	2¾	"

**B**

45***	2⅝	2⅝	2⅝	2½	2½	2⅝	2⅞	Yd
60***	2	2	2	2	2½	2½	2½	"

**C**

45***	2⅝	2⅝	2⅝	2½	2½	2½	2½	Yd
60***	1⅝	1¾	1¾	1⅞	2	2	2⅞	"

### GARMENT MEASUREMENTS

A,B,C Bust	33½	34½	35½	37	39	41	43	In
Finished back length from base of neck:								
A	51	51¼	51½	51¾	52	52¼	52½	In
B,C	39	39¼	39½	39¾	40	40¼	40½	"

### SUGGESTED FABRICS

Charmeuse, Challis, Crepe, Double Georgette, lightweight Linen Types, Silky Types. Allow extra fabric for matching plaids or stripes.

### REQUIREMENTS

Thread, one 22" zipper, two ⅝" buttons, one hook and eye.

\*without nap \*\*with nap \*\*\*with or without nap

### JEUNE FEMME: PATRON SEPT TAILLES / SEÑORITAS: PATRON SIETE TALLAS

Tailles / Tallas	6	8	10	12	14	16	18	
Tailles Française	34	36	38	40	42	44	46	
Tallas Europeas	32	34	36	38	40	42	44	
Poitrine / Busto	78	80	83	87	92	97	102	cm
Taille / Cintura	58	61	64	67	71	76	81	"
Hanches / Caderas	83	85	88	92	97	102	107	"
Dos (encolure à Taille) / Espalda (escote a cintura)								
	39.5	40	40.5	41.5	42	42.5	43	cm

**A,B,C Entoilage-** 0.40m de 51cm à 64cm, léger, thermocollant que Pellon®

**A,B,C Entretela-** 0.40m de 51cm a 64cm, ligera, adhesiva como Pellon®

**A**

115cm**	3.30	3.40	3.40	3.40	3.40	3.50	3.50	m
150cm**	2.40	2.40	2.40	2.40	2.40	2.40	2.50	"

**B**

115cm**	2.10	2.20	2.20	2.20	2.30	2.40	2.60	m
150cm**	1.80	1.80	1.80	1.90	1.90	1.90	2.00	"

**C**

115cm**	2.10	2.20	2.20	2.20	2.30	2.30	2.30	m
150cm**	1.50	1.50	1.60	1.70	1.80	1.80	1.90	"

### TISSUS SUGGERES

Charmeuse, Étamine, Crêpe, Crêpe Georgette Double, Toile de Lin légère, Tissus Soyeux. Prévoyez davantage de tissu pour raccorder les écosais ou rayures.

### MERCERIE

Fil, une glissière de 55cm, deux boutons de 1cm, une agrafe.

### TELAS SUGERIDAS

Charmeuse, Chalí, Crêpé, Crêpe Georgette Doble, Tela de Lino Ligera, Telas Sedosas. Se necesita tela extra para casar cuadros o rayas.

### MERCERIA

Hilo, una cremallera de 55cm, dos botones de 1cm, un corchete.

\*sans sens \*\*avec sens \*\*\*avec ou sans sens

\*sin pelusa \*\*con pelusa \*\*\*sin o con pelusa

**6574**  
SIZE / TAILLE / TALLA  
U.S. 6-18  
FR. 34-46  
**A** EURO. 32-44