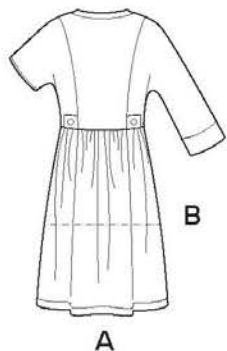


**10 PIECES/PIEZAS**  
Métrages et instructions  
de couture en Français à  
l'intérieur de l'enveloppe.



### MISSES' SEVEN SIZES IN ONE

Sizes	10	12	14	16	18	20	22	
European Size	36	38	40	42	44	46	48	
Bust	32½	34	36	38	40	42	44	In
Waist	25	26½	28	30	32	34	37	"
Hip	34½	36	38	40	42	44	46	"
Back-neck to waist	16	16¼	16½	16¾	17	17¼	17¾	"

<b>A</b>								
45"***	2¾	3	3	3	3½	3½	3¾	Yd
60"***	2¾	2¾	2¾	2¾	2½	2½	2½	"

**Interfacing-** 1½ yd. of 20" to 25" lightweight fusible, such as Pellon®

<b>B</b>								
45"***	2¾	3	3	3	3	3	3	Yd
60"***	2	2½	2½	2¼	2¼	2¼	2¼	"

**Interfacing-** 1¼ yd. of 20" to 25" lightweight fusible, such as Pellon®

<b>C</b>								
45"***	2¾	2½	2½	2½	2¼	2¼	2¼	Yd
60"***	1½	1½	1½	1½	1½	1½	1½	"

**Interfacing-** 1½ yd. of 20" to 25" lightweight fusible, such as Pellon®

### GARMENT MEASUREMENTS

A,B,C Bust	40	41½	43½	45½	47½	49½	51½	In
Finished back length from base of neck:								
A	36	36¼	36½	36¾	37	37¼	37½	In
B	26	26¼	26½	26¾	27	27¼	27½	"
C	21½	21¾	22	22¼	22½	22¾	23	"

### SUGGESTED FABRICS

Batiks, Chambray, Cotton Types, Linen Types, Poplin, Shirtings, Silky Types, lightweight Tweed. Allow extra fabric for matching plaids or stripes.

### REQUIREMENTS

Thread. **A:** Nine ¾" buttons. **B:** Five or six ¾" buttons. **C:** Five ¾" buttons.

\*without nap \*\*with nap \*\*\*with or without nap

### JEUNE FEMME: PATRON SEPT TAILLES / SEÑORITAS: PATRON SIETE TALLAS

Tailles / Tallas	10	12	14	16	18	20	22	
Tailles Françaises	38	40	42	44	46	48	50	
Tallas Europeas	36	38	40	42	44	46	48	
Poitrine / Busto	83	87	92	97	102	107	112	cm
Taille / Cintura	64	67	71	76	81	89	94	"
Hanches / Caderas	88	92	97	102	107	112	117	"
Dos (encolure à Taille) / Espalda (escote a cintura)								
	40.5	41.5	42	42.5	43	44	44	cm

<b>A</b>								
115cm**	2.70	2.70	2.80	2.80	2.80	2.80	2.90	m
150cm**	2.10	2.20	2.20	2.20	2.20	2.20	2.30	"

**Entoilage-** 1.40m de 51cm à 64cm, léger, thermocollant tel que Pellon®

**Entretela-** 1.40m de 51cm a 64cm, ligera, adhesiva como Pellon®

<b>B</b>								
115cm**	2.70	2.70	2.70	2.70	2.70	2.80	2.80	m
150cm**	1.80	1.90	2.00	2.00	2.00	2.10	2.10	"

**Entoilage-** 1.20m de 51cm à 64cm, léger, thermocollant tel que Pellon®

**Entretela-** 1.20m de 51cm a 64cm, ligera, adhesiva como Pellon®

<b>C</b>								
115cm**	1.90	2.00	2.00	2.00	2.00	2.00	2.00	m
150cm**	1.40	1.40	1.50	1.50	1.50	1.50	1.50	"

**Entoilage-** 1.10m de 51cm à 64cm, léger, thermocollant tel que Pellon®

**Entretela-** 1.10m de 51cm a 64cm, ligera, adhesiva como Pellon®

### TISSUS SUGGERES

Batiks, Chambray, Cottonnades, Toile de Lin, Popeline fine, Shirting, Tissus Soyeux, Tweed léger. Prévoyez davantage de tissu pour raccorder les écossais ou rayures.

### MERCERIE

Fil. **A:** Neuf boutons de 2cm. **B:** Cinq ou six boutons de 2cm. **C:** Cinq boutons de 2cm.

### TELAS SUGERIDAS

Batik, Chambray, Mezclas de Algodones, Tela de Lino, Popelina fina, Shirting, Telas Sedosas, Tweed ligera. Se necesita tela extra para casar cuadros o rayas.

### MERCERIA

Hilo. **A:** Nueve botones de 2cm. **B:** Cinco o seis botones de 2cm. **C:** Cinco botones de 2cm.

\*sans sens \*\*avec sens \*\*\*avec ou sans sens

\*sin pelusa \*\*con pelusa \*\*\*sin o con pelusa

**N6607**  
SIZE / TAILLE / TALLA  
U.S. 10-22  
FR. 38-50  
EURO. 36-48