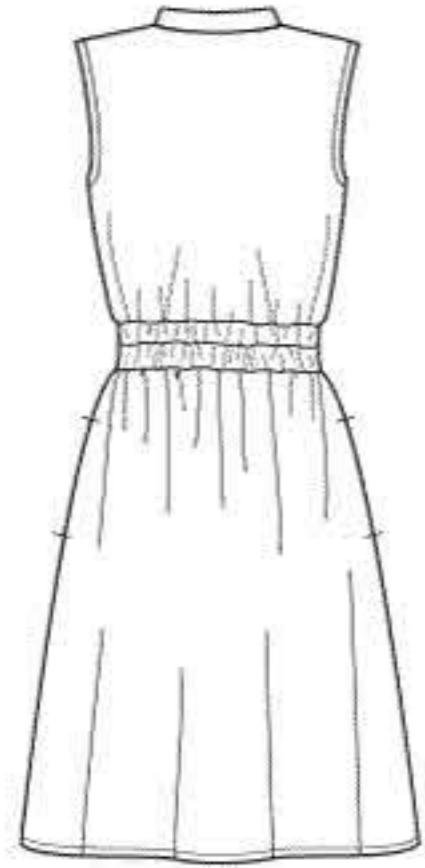


N6651

11 PIECES/PIEZAS



A



B

N6651
 SIZE / TAILLE / TALLA
 U.S. 10-22
 FR. 38-50
A EURO. 36-48

MISSES' SEVEN SIZES IN ONE

Sizes	10	12	14	16	18	20	22	
European Size	36	38	40	42	44	46	48	
Bust	32½	34	36	38	40	42	44	In
Waist	25	26½	28	30	32	34	37	"
Hip	34½	36	38	40	42	44	46	"
Back-neck to waist	16	16¼	16½	16¾	17	17¼	17¾	"

A

45***	2½	2½	2¾	2¾	2¾	2¾	2¾	Yd
60***	1¾	2	2	2½	2½	2½	2½	"

Interfacing- 1¼ yds. of 20" to 25" lightweight fusible such as Pellon®

B

45***	3½	3½	3¾	3¾	3¾	3¾	3¾	Yd
60***	2½	2¾	2¾	2¾	2¾	3	3½	"

Interfacing- 1½ yds. of 20" to 25" lightweight fusible such as Pellon®

GARMENT MEASUREMENTS

A,B Bust	38	39½	41½	43½	45½	47½	49½	In
A,B Hip	49	50½	52½	54½	56½	58½	60½	"

Finish back length from base of neck:

A	38	38¼	38½	38¾	39	39¼	39½	In
B	46	46¼	46½	46¾	47	47¼	47½	"

A Width	63	64½	66½	68½	70½	72½	74½	"
B Width	72½	74	76	78	80	82	84	"

SUGGESTED FABRICS

Challis, Chambray, Chino, Cotton Types, Crepe de Chine, Gingham, Lightweight Denim, Linen Blends, Poplin, Shirtings. Allow extra fabric for matching plaids or stripes.

REQUIREMENTS

Thread, ten ⅝" buttons, 2 yds. of ⅞" wide elastic. **A:** One pkg. of ½" wide single fold bias tape.

*without nap **with nap ***with or without nap

JEUNE FEMME: PATRON SEPT TAILLES / SEÑORITAS: PATRON SIETE TALLAS

Tailles / Tallas	10	12	14	16	18	20	22	
Tailles Françaises	38	40	42	44	46	48	50	
Tallas Europeas	36	38	40	42	44	46	48	
Poitrine / Busto	83	87	92	97	102	107	112	cm
Taille / Cintura	64	67	71	76	81	89	94	"
Hanches / Caderas	88	92	97	102	107	112	117	"
Dos (encolure à Taille) / Espalda (escote a cintura)	40.5	41.5	42	42.5	43	44	44	cm

A

115cm**	2.40	2.40	2.50	2.50	2.60	2.60	2.60	m
150cm**	1.80	1.80	1.80	1.90	2.20	2.20	2.30	"

Entoilage- 1.20m de 51cm à 64cm, léger, thermocollant tel que Pellon®

Entretela- 1.20m de 51cm a 64cm, ligera, adhesiva como Pellon®

B

115cm**	3.20	3.30	3.30	3.40	3.40	3.50	3.50	m
150cm**	2.40	2.50	2.60	2.60	2.70	2.70	2.80	"

Entoilage- 1.30m de 51cm à 64cm, léger, thermocollant tel que Pellon®

Entretela- 1.30m de 51cm a 64cm, ligera, adhesiva como Pellon®

TISSUS SUGGERES

Étamine, Chambray, Chino, Cottonades, Crêpe de Chine, Vichy, Denim Léger, Mélanges de Lin, Popeline fine, Shirting. Prévoyez davantage de tissu pour raccorder les écossais ou rayures.

MERCERIE

Fil, dix boutons de 1.5cm, 1.80m d'élastique de 2.2cm de large. **A:** Un paquet de ruban de biais simple de 1.3cm de large.

TELAS SUGERIDAS

Chalí, Chambray, Chino, Mezclas de Algodones, Crepé de China, Guingán, Dril Ligero, Mezclas de Lino, Popelina fina, Shirting. Se necesita tela extra para casar cuadros o rayas.

MERCERIA

Hilo, diez botones de 1.5cm, 1.80m de elástico de 2.2cm de ancho.

A: Un paquete de cinta de bias sencillo de 1.3cm de ancho.

*sans sens **avec sens ***avec ou sans sens

*sin pelusa **con pelusa ***sin o con pelusa