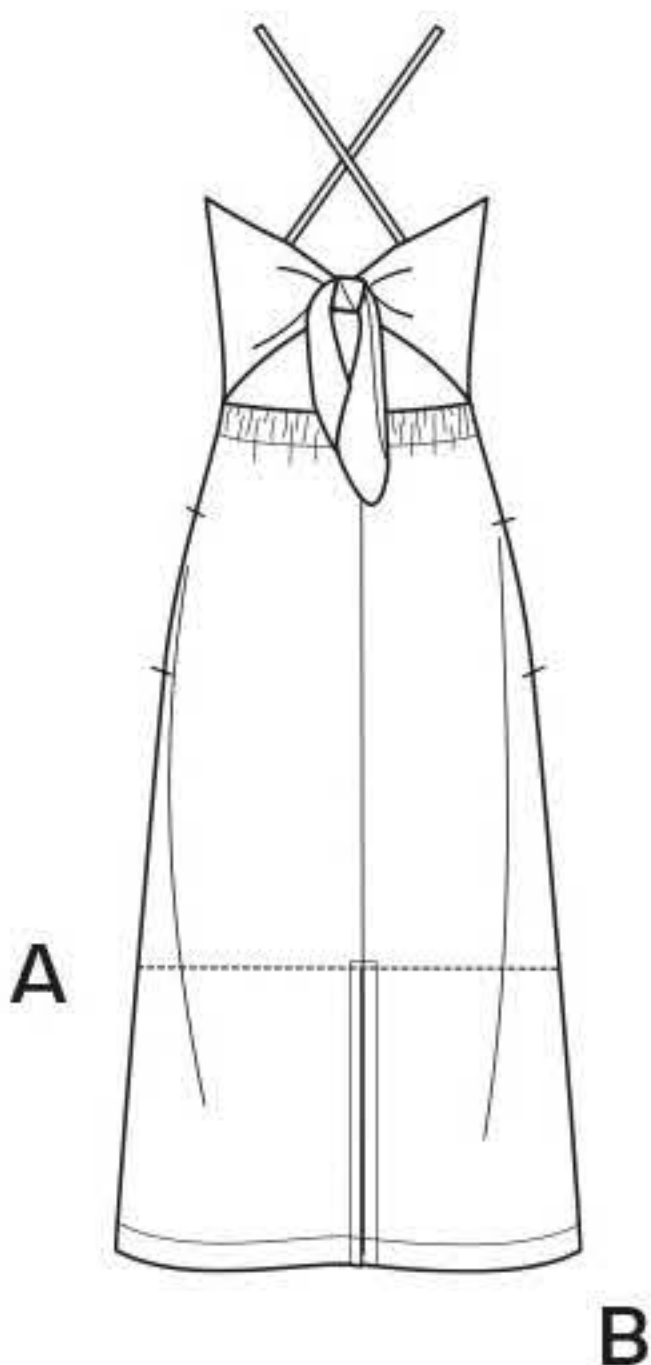


# N6666

8 PIECES/PIEZAS



## MISSES' SEVEN SIZES IN ONE

Sizes	6	8	10	12	14	16	18	
European Sizes	32	34	36	38	40	42	44	
Bust	30½	31½	32½	34	36	38	40	In
Waist	23	24	25	26½	28	30	32	"
Hips	32½	33½	34½	36	38	40	42	"
Back-neck to waist	15½	15¾	16	16¼	16½	16¾	17	"

### A,B Lining

45"***	½	½	½	½	½	⅝	⅝	Yd
--------	---	---	---	---	---	---	---	----

**A,B Interfacing-** ⅝ yd. of 20" to 25" lightweight fusible

### A

45"***	2⅞	2¼	2¼	2¼	2¾	2¾	2¾	Yd
60"***	1⅞	1⅞	1⅞	1⅞	1⅞	2	2	"

### B

45"***	2⅞	2⅞	2⅞	2⅞	2⅞	3	3	Yd
60"***	1⅞	2	2	2⅞	2¼	2¾	2¾	"

## GARMENT MEASUREMENTS

Bust	30½	31½	32½	34	36	38	40	In
Hip	38	39	40	41½	43½	45½	47½	"

**Finished back length from base of neck:**

A	39½	39¾	40	40¼	40½	40¾	41	In
B	51½	51¾	52	52¼	52½	52¾	53	"
A Width	47½	48½	49½	51	53	55	57	"
B Width	54½	55½	56½	58	60	62	64	"

## SUGGESTED FABRICS

Chambray, Cotton Types, Gingham, Linen Types, Pique, Poplin, Sateen, Seersucker. Allow extra fabric for matching plaids or stripes.

## REQUIREMENTS

Thread, ⅝ yd. of 1¼" wide elastic.

\*without nap \*\*with nap \*\*\*with or without nap

## JEUNE FEMME: PATRON SEPT TAILLES/ SEÑORITAS: PATRON SIETE TALLAS

Tailles / Tallas	6	8	10	12	14	16	18	
Tailles Française	34	36	38	40	42	44	46	
Tallas Europeas	32	34	36	38	40	42	44	
Poitrine / Busto	78	80	83	87	92	97	102	cm
Taille / Cintura	58	61	64	67	71	76	81	"
Hanches / Caderas	83	85	88	92	97	102	107	"
Dos (encolure à Taille) / Espalda (escote a cintura)	39.5	40	40.5	41.5	42	42.5	43	cm

### A,B Doublure/ A,B Forro

115cm*	0.50	0.50	0.50	0.50	0.50	0.50	0.50	m
--------	------	------	------	------	------	------	------	---

**A,B Entoilage-** 0.50m de 51cm à 64cm, léger, thermocollant

**A,B Entretela-** 0.50m de 51cm a 64cm, ligera, adhesiva

### A

115cm**	2.00	2.00	2.00	2.10	2.10	2.10	2.20	m
150cm**	1.70	1.70	1.70	1.70	1.70	1.80	1.80	"

### B

115cm**	2.60	2.60	2.60	2.60	2.70	2.70	2.70	m
150cm**	1.80	1.80	1.90	1.90	2.00	2.10	2.20	"

## TISSUS SUGGERES

Chambray, Cottonnades, Vichy, Toile de Lin, Piqué, Popeline, Satinette, Seersucker. Prévoyez davantage de tissu pour raccorder les écosais ou rayures.

## MERCERIE

Fil, 0.60m d'élastique de 3.2cm de large.

## TELAS SUGERIDAS

Chambray, Mezclas de Algodones, Guingán, Tela de Lino, Piqué, Popelina, Satén de Algodón, Seersucker. Se necesita tela extra para casar cuadros o rayas.

## MERCERIA

Hilo, 0.60m de elástico de 3.2cm de ancho.

\*sans sens \*\*avec sens \*\*\*avec ou sans sens

\*sin pelusa \*\*con pelusa \*\*\*sin o con pelusa

**N6666**  
 SIZE / TAILLE / TALLA  
 U.S. 6-18  
 FR. 34-46  
 A EURO. 32-44