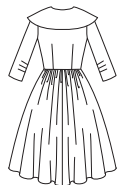


1459

17 PIECES/PIEZAS

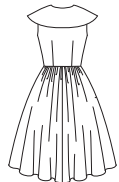
Medidas e Instrucciones de costura en Español en el Interior del Patrón.



A



B



C

MISSÉS/MISS PETITE DRESS AND CUMMERBUND

Fabrics: Lightweight to medium weight woven fabrics such as: Cotton and Linen Types, Cotton Lawn, Damask, Dupioni, Shantung, Gingham, Madras, Pique, Poplin, Sateen, Satin, Seersucker, Taffeta. **B Contrast Overskirt and Cumberbund** in Batiste, Dotted Swiss, Georgette, Organza, Voile. Extra fabric needed to match plaids, stripes or one-way design fabrics.

Notions: Thread, 14" zipper, two 1" buttons, one pkg. of hem tape. Look for Simplicity Trims.

BODY MEASUREMENTS (For Sizing Help Visit www.simplicity.com/sizehelp)

Bust 31½ 32½ 34 36 38 40 42 44 46 48 50 In

Waist 24 25 26½ 28 30 32 34 37 39 " "

Hip-9" below waist 33½ 34½ 36 38 40 42 44 46 48 " "

Back-neck to waist 15½ 16 16¼ 16½ 16¾ 17 17¼ 17½ 17¾ " "

Pattern Size 8 10 12 14 16 18 20 22 24

Sizes-European 34 36 38 40 42 44 46 48 50

A Dress 45*** 4½ 4½ 4½ 4½ 5½ 5½ 5½ 5½ 6 6 Yd

60*** 3½ 3½ 3¾ 4¾ 4¾ 4¾ 4¾ 4¾ 4¾ " "

Interfacing- 1½ yd. of 20" to 25" lightweight fusible, such as Pellon®

B Dress 45*** 4½ 4½ 4½ 4½ 5½ 5½ 5½ 5½ 5½ 5½ Yd

60*** 3¾ 3¾ 3¾ 4¾ 4¾ 4¾ 4¾ 4¾ 4¾ " "

Contrast Overskirt

45*** 3½ 3½ 3½ 3½ 3½ 3½ 3½ 3½ 3½ 3½ Yd

60*** 2 2 2¾ 3¾ 3¾ 3¾ 3¾ 3¾ 3¾ 3¾ " "

Interfacing- 1½ yd. of 20" to 25" lightweight fusible, such as Pellon®

C Dress 45*** 4½ 4½ 4½ 4½ 5½ 5½ 5½ 5½ 5½ 5½ Yd

60*** 3¾ 3¾ 3¾ 4¾ 4¾ 4¾ 4¾ 4¾ 4¾ " "

Interfacing- 1¾ yd. of 20" to 25" lightweight fusible, such as Pellon®

A,B,C Skirt Lining (opt.)

45** 2½ 2½ 2½ 2½ 2¾ 2¾ 2¾ 2¾ 2¾ 2¾ Yd

Net Underskirt (opt.)

54" 3½ 3½ 3½ 3½ 3¾ 3¾ 3¾ 3¾ 3¾ 3¾ Yd

Ribbon Belt- 3¾ yd. of 1½" wide ribbon

Notions: Two large hooks and eyes

Cumberbund- 1¼ yd. of 45" or 60***

Notions: Featherweight Boning- ¾ yd. of ¼" wide, four large hooks and eyes

FINISHED GARMENT MEASUREMENTS (Includes Design and Wearing EASE)

A,B,C Bust 34½ 35½ 37 39 41 43 45 47 49 In

Finished back length from base of neck:

A,B,C 41¾ 42 42¼ 42½ 42¾ 43 43¼ 43½ 43¾ In

without nap *with nap ****with or without nap

Simplicity Sewing Patterns from www.sewessential.co.uk

JEUNE FEMME / PETITE JEUNE FEMME: ROBE ET GRANDE CEINTURE

Tissus: Tissés Légers à Moyens tels que: Coton et Lin, Linon, Soie Damassée, Soie Dupionée, Shantung, Vichy, Madras, Piqué, Popeline fine, Satinette, Satin, Seersucker, Taffetas. **B Dessus de Jupe et Grande Ceinture contrastants** en Batiste, Plumetis, Crêpe Georgette, Organza, Voile. Prévoyez davantage de tissu pour raccorder les écosais, les rayures ou les motifs unidirectionnels.

Merceria: Fil, une glissière de 35cm, deux boutons de 2.5cm, un paquet d'extra-fort pour ourlet. Demandez les garnitures de Simplicity Trims.

MESURES NORMALISÉES

Poitrine 80 83 87 92 97 102 107 112 117 cm

Taille 61 64 67 71 76 81 87 94 99 " "

Hanches (23cm au-dessous de la taille)

85 88 92 97 102 107 112 117 122 cm

Dos (encolure à taille) 40 40.5 41.5 42 42.5 43 44 44 44.5 cm

Tailles 8 10 12 14 16 18 20 22 24

Tailles-Françaises 36 38 40 42 44 46 48 50 52

A Robe 115cm** 4.10 4.10 4.10 4.10 4.90 5.00 5.10 5.30 5.50 m

150cm** 3.20 3.20 3.40 4.00 4.10 4.10 4.10 4.10 4.20 " "

Entoilage- 1.50m de 51cm à 64cm, léger thermocollant tels que Pellon®

B Robe 115cm** 4.10 4.10 4.10 4.10 4.90 5.00 5.00 5.00 5.10 m

150cm** 3.00 3.00 3.40 4.00 4.10 4.10 4.10 4.10 4.20 " "

Dessus-de Jupe Contrastant

115cm** 3.10 3.10 3.10 3.10 3.10 3.10 3.10 3.10 3.10 m

150cm** 1.90 2.10 2.50 3.00 3.00 3.00 3.10 3.10 3.10 " "

Entoilage- 1.50m de 51cm à 64cm, léger thermocollant tels que Pellon®

C Robe 115cm** 4.10 4.10 4.10 4.10 4.90 5.00 5.00 5.00 5.10 m

150cm** 3.00 3.00 3.40 4.00 4.10 4.10 4.10 4.10 4.20 " "

Entoilage- 1.60m de 51cm à 64cm, léger thermocollant tels que Pellon®

A,B,C Doublure de la Jupe (facult.)

115cm* 2.30 2.40 2.40 2.40 2.50 2.50 2.60 2.60 2.60 m

Dessus-de-Jupe en Tulle (facult.)

140cm 3.20 3.20 3.20 3.20 3.30 3.30 3.30 3.30 3.30 m

Ceinture en Ruban- 3.00m de ruban de 3.8cm de large.

Merceria: Deux grosses agrafes

Grande Ceinture - 1.10m de 115cm ou 150cm**

Merceria: Baleine très fine- 0.40m de 6mm de large, quatre grosses agrafes

MESURES DES VÊTEMENTS FINIS

A,B,C Poitrine 87.5 90 94 99 104 110 115 120 125 cm

Longueur finie du dos depuis la base du cou:

A,B,C 106 107 107 108 109 110 110 111 111 cm

sans sens **avec sens *avec ou sans sens

To be used for individual private home use only and not for commercial or manufacturing purposes. / A usage privé seulement et non à des fins commerciales ou de production en série. / Para uso privado solamente, no se puede utilizar con propósitos de comercialización o de producción en serie.