

1551

12 PIECES

MISSES' COSTUME

Fabrics: Crepe, Laundered Silks-Rayons, Sandwashed Silk, Sueded Silks-Rayons, A Contrast in Chiffon, Georgette, Novelty Sheer Fabrics. Extra fabric needed to match plaids, stripes or one-way design fabrics.

Notions: Thread, one 22" zipper, hook and eye. **A:** Two appliques, three hooks. Look for Simplicity Trims.

BODY MEASUREMENTS (For Sizing Help Visit www.simplicity.com/sizehelp)

Bust 31½ 32½ 34 36 38 40 42 44 46 In

Waist 24 25 26½ 28 30 32 34 37 39 "

Hip-9" below waist

33½ 34½ 36 38 40 42 44 46 48 "

Back-neck to waist

15¾ 16 16¼ 16½ 16¾ 17 17¼ 17¾ 17½ "

Size 8 10 12 14 16 18 20 22 24

Sizes-European

34 36 38 40 42 44 46 48 50

A Dress

45*** 8½ 9 9 9¼ 9½ 9¾ 10 10½ 10¾ Yd

60*** 6½ 6¾ 6¾ 7¼ 7½ 7¾ 7¾ 7¾ 7¾ "

Contrast Sleeves and Neck Drape

45*** 3¾ 3¾ 3¾ 3¾ 3¾ 3¾ 3¾ 3¾ 3¾ Yd

60*** 3¾ 3¾ 3¾ 3¾ 3¾ 3¾ 3¾ 3¾ 3¾ "

Interfacing ¾ yd. of 20" to 25" lightweight fusible, such as Pellon®

B Dress

45*** 11¾ 11¾ 11¾ 12½ 12½ 12½ 13 13¾ 13¾ Yd

60*** 7¾ 7¾ 8¾ 8¾ 8¾ 9 9¼ 9¾ 9¾ "

Contrast Front Insert and Drape ¾ yd. of 45" or 60"

Interfacing 1 yd. of 20" to 25" lightweight fusible, such as Pellon®

FINISHED GARMENT MEASUREMENTS (Includes Design and Wearing EASE)

A,B Bust 34 35 36½ 38½ 40½ 42½ 44½ 46½ 48½ In

COSTUME POUR JEUNE FEMME

Tissus: Crêpe, Soies-Rayonnes prélavées, Soie lavée au sable, Soies-Rayonnes Suédées, A Parties Contrastantes en Mousseline, Crêpe Georgette, Tissus fantaisie transparents. Prévoyez davantage de tissu pour raccorder les écossais, les rayures ou les motifs unidirectionnels.

Mercerie: Fil. Une glissière de 55cm, une agrafe. **A:** Deux application, trois agrafes. Demandez les garnitures de Simplicity Trims.

MESURES NORMALISÉES

Poitrine 80 83 87 92 97 102 107 112 117 cm

Taille 61 64 67 71 76 81 87 94 99 "

Hanches (23cm au-dessous de la taille)

85 88 92 102 107 112 117 122 cm

Dos (encolure à taille)

40 40.5 41.5 42 42.5 43 44 44 44.5 cm

Tailles 8 10 12 14 16 18 20 22 24

Tailles-Fr. 36 38 40 42 44 46 48 50 52

Tailles-Euro. 34 36 38 40 42 44 46 48 50

A Robe

115cm*** 8.20 8.20 8.20 8.50 8.70 8.90 9.20 9.60 9.80 m

150cm*** 5.80 5.90 6.20 6.70 6.70 6.70 6.80 6.80 6.80 "

Manches et Drapé d'encolure Contrastantes

115cm*** 3.40 3.40 3.40 3.40 3.50 3.50 3.50 3.50 m

150cm*** 2.80 2.80 2.80 2.80 2.80 2.80 2.80 2.80 "

Entoilage 0.70m de 51cm à 64cm, léger, thermocollant, tel que Pellon®

B Robe

115cm*** 10.80 10.80 10.90 11.10 11.30 11.60 11.80 12.20 12.50m

150cm*** 7.00 7.10 7.50 7.80 8.10 8.30 8.40 8.50 8.60 "

Incrustation et Drapé devant contrastants 0.80m de 115cm*** ou 150cm***

Entoilage 0.90m de 51cm à 64cm, léger, thermocollant, tel que Pellon®

MESURES DES VÊTEMENTS FINIS

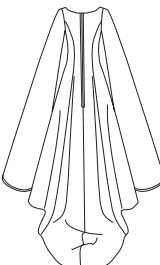
A,B Poitrine 86.5 89 92.5 98 103 108 111 118 123 cm

*without nap **with nap ***with or without nap

*sans sens **avec sens ***avec ou sans sens



A



B