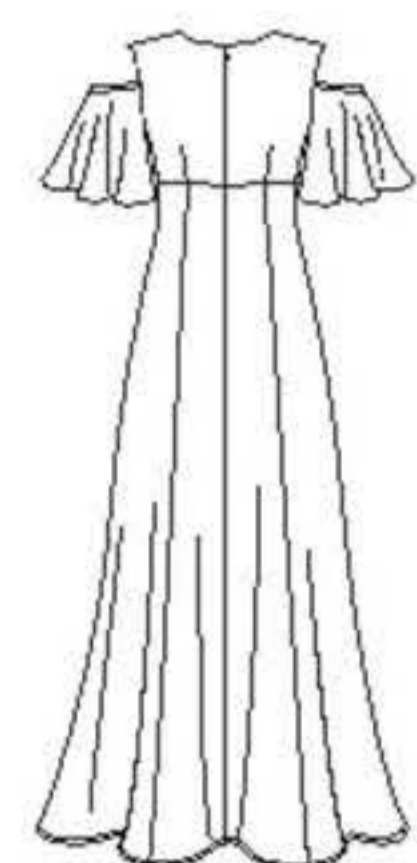


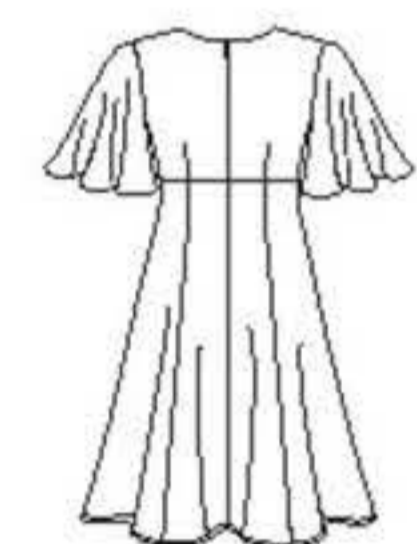
8292

17 PIECES/PIEZAS

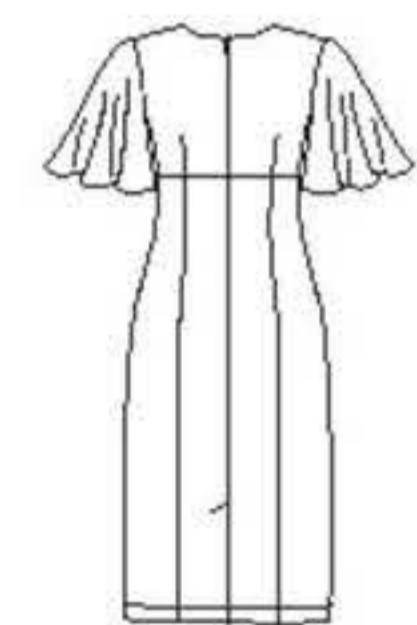
Métrages et Instructions de couture en Français à l'intérieur de l'enveloppe.



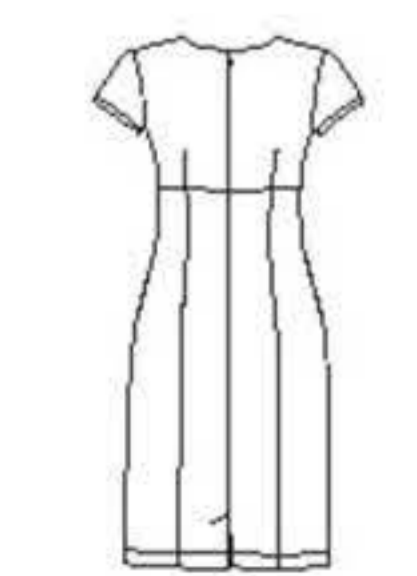
A



B



C



D

MISSSES'/MISS PETITE DRESSES

Fabrics: Chambray, Charmeuse, Cotton Lawn, Crepe, Crepe de Chine, Double Georgette, Silky Types, Voile. Extra fabric needed to match plaids, stripes, and one-way design fabrics.

Extra fabric needed to match plaids, stripes or one-way design fabrics.

Notions: Thread, one 22" invisible zipper. Look for Simplicity Trims.

BODY MEASUREMENTS (For Sizing Help Visit www.simplicity.com/sizehelp)

Bust	30½	31½	32½	34	36	38	40	42	44	ln
Waist	23	24	25	26½	28	30	32	34	37	"
Hip-9" below waist	32½	33½	34½	36	38	40	42	44	46	"
Back-neck to waist	15½	15¾	16	16¼	16½	16¾	17	17¼	17¾	"
Sizes	6	8	10	12	14	16	18	20	22	
European	32	34	36	38	40	42	44	46	48	

A,B,C,D Lining

45"*	½	½	½	½	½	⅝	⅝	¾	¾	Yd
------	---	---	---	---	---	---	---	---	---	----

Interfacing- ⅜ yd. of 20" to 25" lightweight fusible, such as Pellon®

A Dress

45"***	4⅞	4⅞	4⅞	4⅞	4⅞	4⅞	4¼	4¼	4½	Yd
60"***	3	3	3	3	3	3	3⅞	3⅞	3⅞	"

B Dress

45"***	1¾	1¾	1⅞	1⅞	1⅞	1⅞	1⅞	2	2⅞	Yd
60"***	2⅞	2¼	2⅝	2¾	2⅞	3	3	3	3	"

C Dress

45"***	2¼	2⅝	2⅝	2⅝	2⅝	2⅝	2¾	2¾	2¾	Yd
60"***	1⅞	1⅞	1⅞	2	2	2	2	2⅞	2⅞	"

D Dress

45"***	1⅝	1¾	1¾	1¾	1¾	1⅞	1⅞	1⅞	2	Yd
60"***	1¼	1¼	1¼	1⅜	1⅜	1⅜	1½	1½	1½	"

FINISHED GARMENT MEASUREMENTS (Includes Design and Wearing EASE)

A,B,C,D Bust	33½	34½	35½	37	39	41	43	45	47	ln
Finished back length from base of neck										
A	49½	49¾	50	50¼	50½	50¾	51	51¼	51½	ln
B	33½	33¾	34	34¼	34½	34¾	35	35¼	35½	"
C	40½	40¾	41	41¼	41½	41¾	42	42¼	42½	"
D	35½	35¾	36	36¼	36½	36¾	37	37¼	37½	"
A Width	48	49	50	51½	53½	55½	57½	59½	61½	"
B Width	61	62	63	64½	66½	68½	70½	72½	74½	"
C,D Width	34	35	36	37½	39½	41½	43½	45½	47½	"

*without nap **with nap ***with or without nap

JEUNE FEMME/PETITE JEUNE FEMME: ROBES

Tissus: Chambray, Charmeuse, Linon, Crêpe, Crêpe de Chine, Crêpe Georgette Double, Tissus soyeux, Voile. Prévoyez davantage de tissu pour raccorder les écossais, rayures ou motifs unidirectionnels.

Mercerie: Fil, una glissière invisible de 55cm.

Demandez les garnitures de Simplicity Trims.

SEÑORITAS/SEÑORITAS PEQUEÑAS: VESTIDOS

Telas: Chambray, Charmeuse, Linón, Crepé, Crepé de China, Crepé Georgette Doble, Telas Sedosas, Velo. Se necesita tela adicional para casar cuadros, rayas o telas estampadas en una dirección.

Mercería: Hilo, una cremallera invisible de 55cm.

Pida los adornos de Simplicity Trims.

MESURES NORMALISÉES/MEDIDAS DEL CUERPO

Poitrine/Busto	78	80	83	87	92	97	102	107	112	cm
Taille/Cintura	58	61	64	67	71	76	81	87	94	"
Hanches (23cm au-dessous de la taille)/Caderas (23cm abajo de la cintura)										
	83	85	88	92	97	102	107	112	117	"

Dos (encolure á taille)/Espalda (escote a cintura)

	39.5	40	40.5	41.5	42	42.5	43	44	44	"
--	------	----	------	------	----	------	----	----	----	---

Tailles/Tallas

	6	8	10	12	14	16	18	20	22	
Françaises	34	36	38	40	42	44	46	48	50	
Europeas	32	34	36	38	40	42	44	46	48	

A,B,C,D Doublure / A,B,C,D Forro

115cm*	0.50	0.50	0.50	0.50	0.50	0.50	0.60	0.60	0.60	m
--------	------	------	------	------	------	------	------	------	------	---

Entoilage- 0.30m de 51cm à 64cm léger thermocollant tels que Pellon®

Entretela- 0.30m de 51cm a 64cm ligera adhesiva como Pellon®

A Robe / A Vestido

115cm**	3.70	3.70	3.80	3.80	3.80	3.80	3.90	3.90	4.10	m
150cm**	2.70	2.70	2.80	2.80	2.80	2.80	2.80	2.80	2.90	"

B Robe / B Vestido

115cm**	2.00	2.00	2.50	2.50	2.60	2.70	2.70	2.70	2.80	m
150cm**	1.60	1.60	1.70	1.70	1.70	1.70	1.70	1.80	2.00	"

C Robe / C Vestido

115cm**	2.10	2.20	2.40	2.40	2.40	2.40	2.50	2.50	2.50	m
150cm**	1.70	1.70	1.80	1.80	1.80	1.80	1.80	1.90	2.00	"

D Robe / D Vestido

115cm**	1.50	1.50	1.60	1.60	1.60	1.70	1.70	1.70	1.80	m
150cm**	1.10	1.20	1.20	1.20	1.30	1.30	1.30	1.30	1.40	"

*sans sens **avec sens ***avec ou sans sens *sin pelusa **con pelusa ***sin o con pelusa

TO BE USED FOR INDIVIDUAL PRIVATE HOME USE ONLY AND NOT FOR COMMERCIAL OR MANUFACTURING PURPOSES. / A USAGE PRIVÉ SEULEMENT ET NON À DES FINS COMMERCIALES OU DE PRODUCTION EN SÉRIE. / PARA USO PRIVADO SOLAMENTE, NO SE PUEDE UTILIZAR CON PROPOSITOS DE COMERCIALIZACION O DE PRODUCCION EN SERIE.