

8447

26 PIECES/PIEZAS

Medidas e Instrucciones de costura en Español en el Interior del Patrón.

MISSES' VINTAGE PANTS, OVERALLS, AND BLOUSES

Fabrics: Chino, Cotton Types, Denim, Gabardine, Linen Types, Twill.
Extra fabric needed to match plaids, stripes or one-way design fabrics.

Notions: Thread. **A:** Four 5/8" buttons. **B:** Nine 5/8" buttons.

C,D: Eight 5/8" buttons, one pair of shoulder pads.

Look for Simplicity Trims.

BODY MEASUREMENTS (For Sizing Help Visit www.simplicity.com/sizehelp)

Bust	30½	31½	32½	34	36	38	40	42	44	46	In
Waist	23	24	25	26½	28	30	32	34	37	39	"
Hip-9" below waist	32½	33½	34½	36	38	40	42	44	46	48	"
Back-neck to waist	15½	15¾	16	16¼	16½	16¾	17	17¼	17¾	17½	"
Sizes	6	8	10	12	14	16	18	20	22	24	
European	32	34	36	38	40	42	44	46	48	50	

A Pants

45"***	2¾	2¾	2¾	2¾	2⅞	2⅞	2⅞	2⅞	2⅞	2⅞	Yd
60"***	1⅞	2⅞	2⅞	2⅞	2½	2½	2⅝	2⅝	2⅝	2¾	"

Interfacing- 1⅞ yd. of 20" to 25" lightweight fusible, such as Pellon®

B Overalls

45"***	3¼	3¼	3¼	3¼	3¼	3¼	3½	3⅝	3⅝	3⅝	Yd
60"***	2¼	2¼	2⅞	2⅞	2⅝	2⅝	2⅝	2⅝	2¾	3	"

Interfacing- ⅞ yd. of 20" to 25" lightweight fusible, such as Pellon®

C Blouse

45"***	2½	2½	2½	2⅝	2⅝	2⅝	2¾	2¾	2¾	2¾	Yd
60"***	1⅞	1⅞	1⅞	2	2	2	2	2	2	2⅞	"

Contrast Hood Facing- ¼ yd. of 45" to 60"***

Interfacing- ⅞ yd. of 20" to 25" lightweight fusible, such as Pellon®

D Blouse

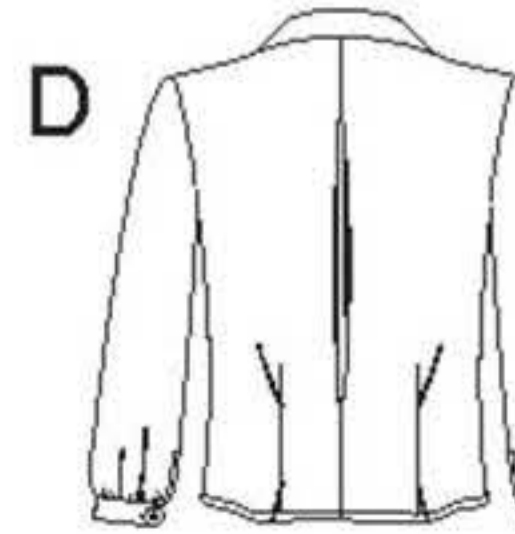
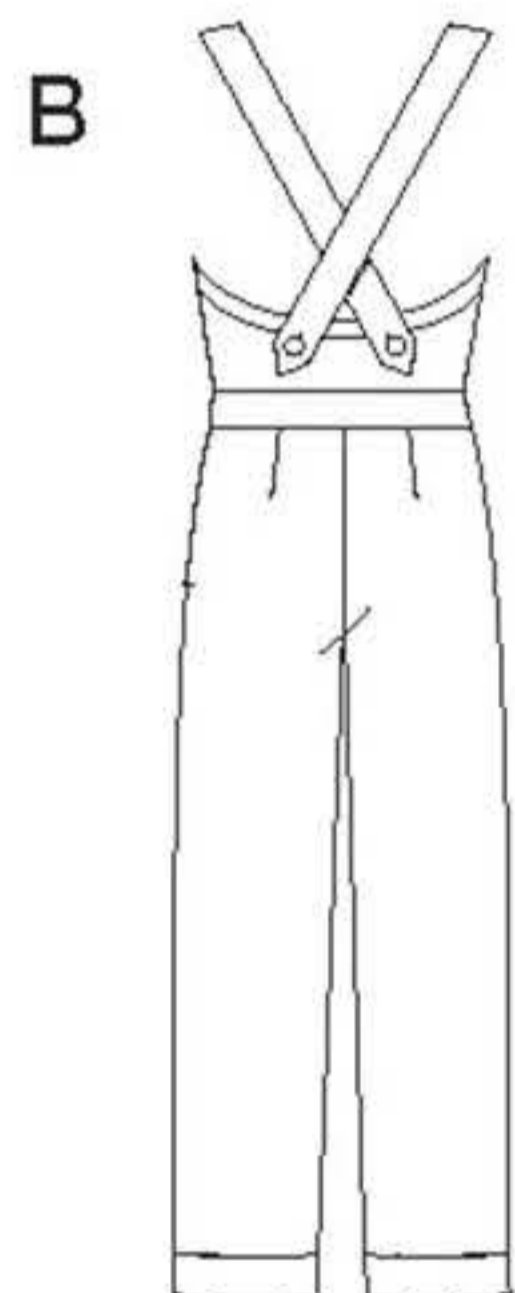
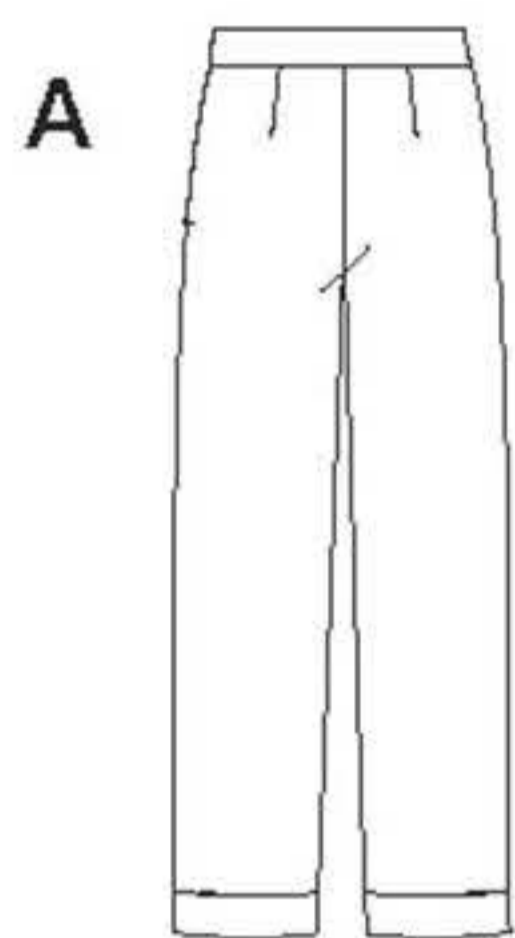
45"***	2¼	2¼	2¼	2⅞	2⅞	2⅞	2½	2½	2½	2½	Yd
60"***	1⅝	1⅝	1⅝	1⅝	1⅝	1⅝	1¾	1¾	1⅞	1⅞	"

Interfacing- ⅞ yd. of 20" to 25" lightweight fusible, such as Pellon®

FINISHED GARMENT MEASUREMENTS (Includes Design and Wearing EASE)

A,B Hip	39	40	41	42½	44½	46½	48½	50½	52½	54½	In
C,D Bust	36	37	38	39½	41½	43½	45½	47½	49½	51½	"
A,B Pants Side Length	41	41¼	41½	41¾	42	42¼	42½	42¾	43	43¼	"
A,B Leg Width	16	16¾	17½	18¼	19	19¾	20½	21¼	22	22¾	"
Finished back length from base of neck											
C,D	20½	20¾	21	21¼	21½	21¾	22	22¼	22½	22¾	In

*without nap **with nap ***with or without nap



JEUNE FEMME: PANTALON, SALOPETTE ET BLOUSES CLASSIQUES

Tissus: Chino, Cotonnades, Denim, Gabardine, Toile de Lin, Twill. Prévoyez davantage de tissu pour raccorder les écossais, les rayures ou les motifs unidirectionnels.

Mercerie: Fil. **A:** Quatre boutons de 1.5cm. **B:** Neuf boutons de 1.5cm.

C,D: Huit boutons de 1.5cm, une paire d'épaulettes.

Demandez les garnitures de Simplicity.

MESURES NORMALISÉES

Poitrine	78	80	83	87	92	97	102	107	112	117	cm
Taille	58	61	64	67	71	76	81	87	94	99	"
Hanches (23cm au-dessous de la taille)	83	85	88	92	97	102	107	112	117	122	cm
Dos (encolure à taille)	39.5	40	40.5	41.5	42	42.5	43	44	44	44.5	cm
Tailles	6	8	10	12	14	16	18	20	22	24	
Françaises	34	36	38	40	42	44	46	48	50	52	

A Pantalon

115cm**	2.50	2.50	2.50	2.60	2.60	2.60	2.60	2.60	2.60	2.60	m
150cm**	1.70	2.20	2.20	2.20	2.20	2.30	2.40	2.40	2.40	2.50	"

Entoilage-1.30m de 51cm à 64cm, léger, thermocollant tel que Pellon®

B Salopette

115cm**	2.90	2.90	3.00	3.00	3.00	3.00	3.10	3.30	3.30	3.30	m
150cm**	2.10	2.10	2.10	2.20	2.40	2.40	2.40	2.40	2.50	2.70	"

Entoilage- 0.80m de 51cm à 64cm, léger, thermocollant tel que Pellon®

C Blouse

115cm**	2.30	2.30	2.30	2.40	2.40	2.40	2.50	2.50	2.50	2.50	m
150cm**	1.70	1.70	1.80	1.80	1.80	1.80	1.80	1.80	1.90	1.90	"

Parementure Contrastante de la Capuche- 0.30m de 115cm à 150cm**

Entoilage- 0.80m de 51cm à 64cm, léger, thermocollant tel que Pellon®

D Blouse

115cm**	2.00	2.10	2.10	2.10	2.20	2.20	2.20	2.30	2.30	2.30	m
150cm**	1.50	1.50	1.50	1.50	1.50	1.50	1.50	1.50	1.70	1.70	"

Entoilage- 0.80m de 51cm à 64cm, léger, thermocollant tel que Pellon®

MESURES DES VÊTEMENTS FINIS

A,B Hanches	99	102	104	108	113	118	123	128	133	139	cm
C,D Poitrine	91.5	94	96.5	100.5	106	113	116	121	126	131	"
A,B Longueur Côté du Pantalon	104	105	106	106	107	107	108	109	110	110	"
A,B Largeur de Jambe	40.5	42.5	44.5	46.5	48.5	50	52	54	56	58	"
Longueur finie du dos depuis la base du cou:											
C,D	52	52.5	53.5	54	54.5	55	56	56	57	58	cm

*sans sens **avec sens ***avec ou sans sens

TO BE USED FOR INDIVIDUAL PRIVATE HOME USE ONLY AND NOT FOR COMMERCIAL OR MANUFACTURING PURPOSES. / A USAGE PRIVÉ SEULEMENT ET NON À DES FINS COMMERCIALES OU DE PRODUCTION EN SÉRIE. / PARA USO PRIVADO SOLAMENTE, NO SE PUEDE UTILIZAR CON PROPOSITOS DE COMERCIALIZACION O DE PRODUCCION EN SERIE.