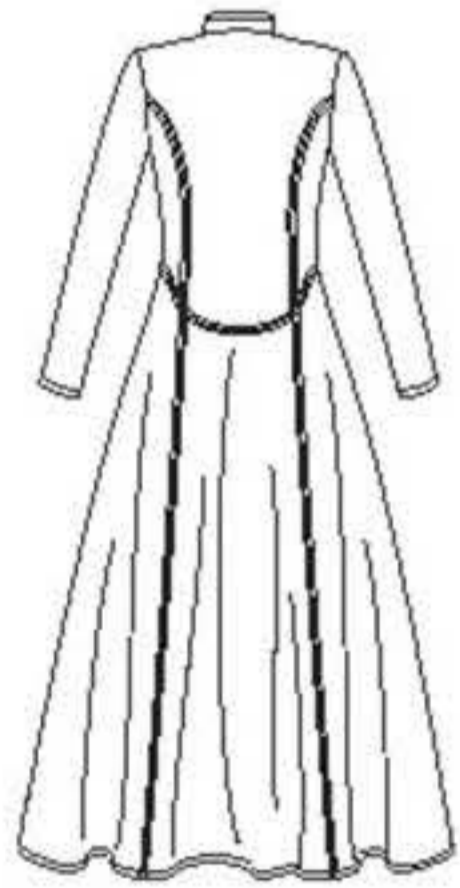


8482

22 PIECES



A



B

MISSES' COSTUME COATS

Fabrics: Denim, Leather-like, Suede-like, Vinyl, Wool Types.
Extra fabric needed to match plaids, stripes or one-way design fabrics.

Notions: Thread, one pair shoulder pads. **A:** One extra-large heavy-duty 53" separating zipper with two slides. **B:** One 11" separating zipper.
Look for Simplicity Trims.

BODY MEASUREMENTS (For Sizing Help Visit www.simplicity.com/sizehelp)

| | | | | | | | | | | |
|---------------------------|-----|-----|-----|-----|-----|-----|----|-----|-----|----|
| Bust | 30½ | 31½ | 32½ | 34 | 36 | 38 | 40 | 42 | 44 | In |
| Waist | 23 | 24 | 25 | 26½ | 28 | 30 | 32 | 34 | 37 | " |
| Hip-9" below waist | | | | | | | | | | " |
| | 32½ | 33½ | 34½ | 36 | 38 | 40 | 42 | 44 | 46 | " |
| Back-neck to waist | | | | | | | | | | " |
| | 15½ | 15¾ | 16 | 16¼ | 16½ | 16¾ | 17 | 17¼ | 17¾ | " |
| Sizes | 6 | 8 | 10 | 12 | 14 | 16 | 18 | 20 | 22 | |
| European | | | | | | | | | | |
| | 32 | 34 | 36 | 38 | 40 | 42 | 44 | 46 | 48 | |

A Coat
60"*** 3⅝ 3⅝ 3¾ 3¾ 3⅞ 4 4 4¼ 4⅝ Yd
Polyester Batting- ⅔ yd. of 45" wide, such as Pellon®

A,B Interfacing- 1⅞ yd. of 20" to 25" lightweight fusible, such as Pellon®

B Coat
60"*** 3¼ 3¼ 3¼ 3¼ 3¼ 3½ 3½ 3½ 3⅝ Yd

FINISHED GARMENT MEASUREMENTS (Includes Design and Wearing EASE)

| | | | | | | | | | | |
|------------------------------------------------|-----|-----|----|-----|-----|-----|-----|-----|-----|----|
| A,B Bust | 36 | 37 | 38 | 39½ | 41½ | 43½ | 45½ | 47½ | 49½ | In |
| Finished back length from base of neck: | | | | | | | | | | |
| A,B | 56½ | 56¾ | 57 | 57¼ | 57½ | 57¾ | 58 | 58¼ | 58½ | In |

*without nap **with nap ***with or without nap

JEUNE FEMME: COSTUME MANTEAUX

Tissus: Denim, Cuir et Suédine Synthétiques, Vinyle, Lainages.
Prévoyez davantage de tissu pour raccorder les écossais, rayures ou motifs unidirectionnels.

Mercerie: Fil, une paire d'épaulettes. **A:** une glissière solide très grande séparable avec deux tirettes. **B:** Une glissière séparable de 28cm.
Demandez les garnitures de Simplicity Trims.

MESURES NORMALISÉES

| | | | | | | | | | | |
|-----------------------------------------------|------|----|------|------|----|------|-----|-----|-----|----|
| Poitrine | 78 | 80 | 83 | 87 | 92 | 97 | 102 | 107 | 112 | cm |
| Taille | 58 | 61 | 64 | 67 | 71 | 76 | 81 | 87 | 94 | " |
| Hanches (23cm au-dessous de la taille) | | | | | | | | | | " |
| | 83 | 85 | 88 | 92 | 97 | 102 | 107 | 112 | 117 | cm |
| Dos (encolure à taille) | | | | | | | | | | " |
| | 39.5 | 40 | 40.5 | 41.5 | 42 | 42.5 | 43 | 44 | 44 | cm |
| Tailles | 6 | 8 | 10 | 12 | 14 | 16 | 18 | 20 | 22 | |
| Françaises | | | | | | | | | | |
| | 34 | 36 | 38 | 40 | 42 | 44 | 46 | 48 | 50 | |

A Manteau
150cm** 3.30 3.40 3.40 3.50 3.60 3.70 3.70 3.90 4.00 m
Ouatine de Polyester - 0.30m de 115cm de large tel que Pellon®

A,B Entoilage- 1.70m de 51cm à 64cm léger thermocollant tel que Pellon®

B Manteau
150cm** 2.90 2.90 2.90 2.90 3.00 3.10 3.20 3.20 3.30 m

MESURES DES VÊTEMENTS FINIS

| | | | | | | | | | | |
|-----------------------------------------------------|------|-----|------|-------|-----|-----|-----|-----|-----|----|
| A,B Poitrine | 91.5 | 94 | 96.5 | 100.5 | 106 | 111 | 116 | 121 | 126 | cm |
| Longueur finie du dos depuis la base du cou: | | | | | | | | | | |
| A,B | 144 | 145 | 145 | 145 | 146 | 147 | 148 | 148 | 149 | cm |

*sans sens **avec sens ***avec ou sans sens

TO BE USED FOR INDIVIDUAL PRIVATE HOME USE ONLY AND NOT FOR COMMERCIAL OR MANUFACTURING PURPOSES. / A USAGE PRIVÉ SEULEMENT ET NON À DES FINS COMMERCIALES OU DE PRODUCTION EN SÉRIE. / PARA USO PRIVADO SOLAMENTE, NO SE PUEDE UTILIZAR CON PROPOSITOS DE COMERCIALIZACION O DE PRODUCCION EN SERIE.