

8517

13 PIECES/PIEZAS

Métrages et Instructions de couture en Français à l'intérieur de l'enveloppe.

MISSES' SET OF PONCHOS

Fabrics: Double Knit, Fleece, Ponte, lightweight Wool Types. **A** also in lightweight Denim. **C** also in Stretch Velvet, Suede-like, Sweater Knits. Extra fabric needed to match plaids, stripes or one-way design fabrics.

Notions: Thread. **B:** two toggle closures. Look for Simplicity Trims.

BODY MEASUREMENTS

Bust	30½-31½	32½-34	36-38	40-42	44-46	In
Waist	23-24	25-26½	28-30	32-34	37-39	"
Hip-9" below waist	32½-33½	34½-36	38-40	42-44	46-48	"
Back-neck to waist	15½-15¾	16-16¼	16½-16¾	17-17¼	17¾-17½"	
Sizes	XS	S	M	L	XL	
	6-8	10-12	14-16	18-20	22-24	
Sizes-European	32-34	36-38	40-42	44-46	48-50	

A Poncho

60***	2¾	2¾	2½	2⅝	3⅛	Yd
Interfacing- ¾ yd. of 20" to 25" wide, such as Pellon®						
Twill Tape- 2¾ yd. of 1" wide						

B Poncho

60***	1⅞	1⅞	2	2⅞	2⅞	Yd
Interfacing- ⅝ yd. of 20" to 25" wide, such as Pellon®						

C Poncho

60***	1⅞	1⅞	2	2	2	Yd
-------	----	----	---	---	---	----

FINISHED GARMENT MEASUREMENTS (Includes Design and Wearing EASE)

Finished back length from base of neck						
A	29½	31	31½	32	32½	In
B	28	28½	29	29½	30	"

*without nap **with nap ***with or without nap

JEUNE FEMME: SÉRIE DE PONCHOS

Tissus: Jersey Double, Molleton, Ponte, Lainages légers.

A En Denim léger aussi. **C** En Velours extensible, Tissus Suédés, Jerseys pour Sweaters aussi. Prévoyez davantage de tissu pour raccorder les écossais, les rayures ou les motifs unidirectionnels.

Mercerie: Fil. **B:** Deux fermetures à brandebourgs. Demandez les garnitures de Simplicity.

SEÑORITAS: SERIE DE PONCHOS

Telas: Mallas dobles, Muletón, Ponte, Mezclas de Lanas ligeras.

A En Dril ligero también. **C** En Terciopelo estirable, Telas agamuzadas, Mallas para Sweaters también. Se necesita tela adicional para casar cuadros, rayas o telas estampadas en una dirección.

Mercería: Hilo. **B:** Dos cierres de alamares. Pida los adornos de Simplicity.

MESURES NORMALISÉES/MEDIDAS DEL CUERPO

Poitrine/Busto	78-80	83-87	92-97	102-107	112-117	cm
Taille/Cintura	58-61	64-67	71-76	81-87	94-99	"
Hanches (23cm au-dessous de la taille)/Caderas (23cm abajo de la cintura)						
	83-85	88-92	97-102	107-112	117-122	cm
Dos (encolure à taille)/Espalda (escote a cintura)						
	39.5-40	40.5-41.5	42-42.5	43-44	44-44.5	cm

Tailles/ Tallas	TP/ XP	P	M	G	TG/ XG
	6-8	10-12	14-16	18-20	22-24
Tailles-Françaises	34-36	38-40	42-44	46-48	50-52
Tallas-Europeas	32-34	36-38	40-42	44-46	48-50

A Poncho/ A Poncho

150cm**	2.20	2.20	2.20	2.40	2.80	m
Entoilage- 0.60m de 51cm à 64cm de large, tel que Pellon®						
Entretela- 0.60m de 51cm a 64cm de ancho como Pellon®						
Talonnette de Coton- 2.10m de 2.5cm de large						
Galón asargado- 2.10m de 2.5cm de ancho						

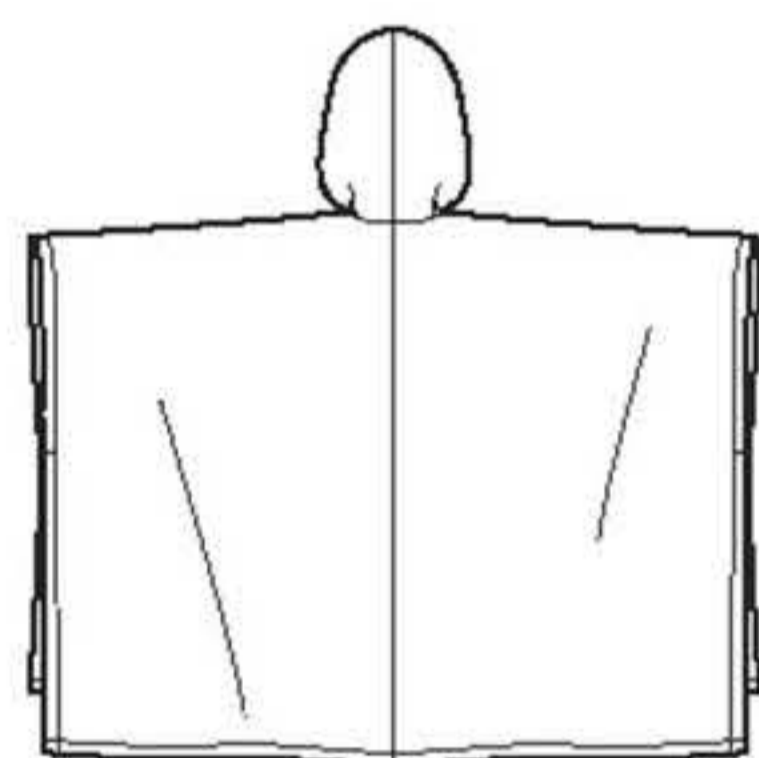
B Poncho/ B Poncho

150cm**	1.70	1.70	1.90	1.90	1.90	m
Entoilage- 0.50m de 51cm à 64cm de large, tel que Pellon®						
Entretela- 0.50m de 51cm a 64cm de ancho como Pellon®						

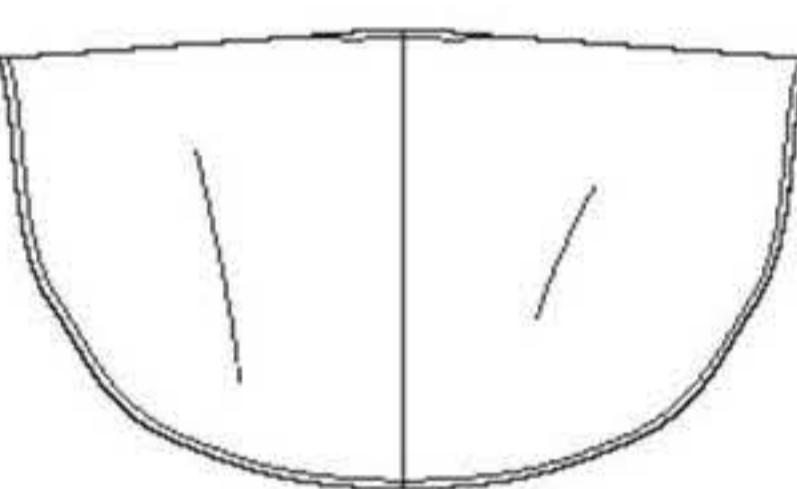
C Poncho/ C Poncho

150cm**	1.70	1.70	1.80	1.80	1.90	m
---------	------	------	------	------	------	---

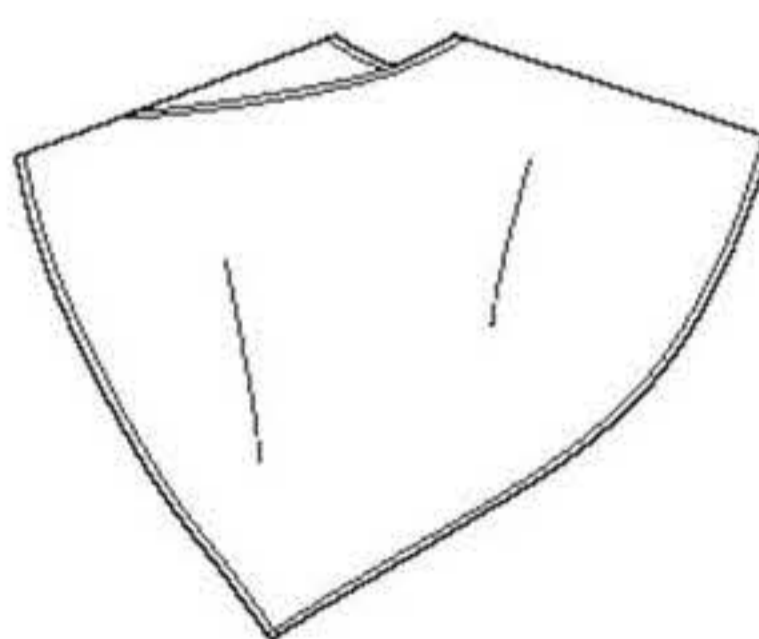
*sans sens **avec sens ***avec ou sans sens *sin pelusa **con pelusa ***sin o con pelusa



A



B



C