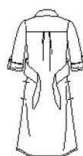


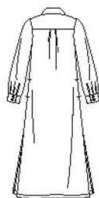
# 8546

15 PIECES/PIEZAS

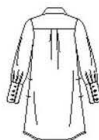
Medidas e Instrucciones de costura en Español en el Interior del Patrón.



A



B



C



D



E

## MISSES'/MISS PETITE SHIRT DRESS IN THREE LENGTHS WITH SLEEVE VARIATIONS

**Fabrics:** Chambray, Cotton Types, Crepe, Double Georgette, Gingham, Lightweight Denim, Linen Types, Poplin, Shirtings, Silky Types. Extra fabric needed to match plaids, stripes or one-way design fabrics.

**Notions:** Thread. **A:** Seventeen ½" buttons. **B:** Fifteen ½" buttons. **C:** Nineteen ½" buttons. **D:** Fifteen ½" buttons, one pkg. of ½" wide single fold bias tape. **E:** Eleven ½" buttons. Look for Simplicity Trims.

### BODY MEASUREMENTS (For Sizing Help Visit [www.simplicity.com/sizehelp](http://www.simplicity.com/sizehelp))

<b>Bust</b>	30½	31½	32½	34	36	38	40	42	44	46	In
<b>Waist</b>	23	24	25	26½	28	30	32	34	37	39	"
<b>Hip-9" below waist</b>	32½	33½	34½	36	38	40	42	44	46	48	In
<b>Back-neck to waist</b>	15½	15¾	16	16¼	16½	16¾	17	17¼	17½	17¾	In
<b>Sizes</b>	6	8	10	12	14	16	18	20	22	24	
<b>European</b>	32	34	36	38	40	42	44	46	48	50	

### A Shirt Dress

45***	3½	3½	3¼	3¼	3¼	3¾	3¾	3¾	3¾	3¾	Yd
60***	2½	2½	2½	2½	2½	2½	2½	2½	2½	3	"

**Interfacing-** ¾ yd. of 20" to 25" lightweight fusible, such as Pellon®

### B Shirt Dress

45***	3¾	3¾	3¾	3¾	3¾	3¾	4	4	4	4	Yd
60***	2½	2½	2½	2½	3	3	3¼	3¼	3¾	3¾	"

**Interfacing-** ¾ yd. of 20" to 25" lightweight fusible, such as Pellon®

### C Shirt Dress

45***	2½	2½	3	3	3	3	3¾	3¾	3¾	3¾	Yd
60***	2	2	2	2	2	2½	2½	2½	2½	2½	"

**Interfacing-** 1 yd. of 20" to 25" lightweight fusible, such as Pellon®

### D Shirt Dress

45***	2½	2½	2½	2½	2½	2½	2½	2½	2½	2½	Yd
60***	1½	1½	1½	1½	1½	1½	2	2	2	2½	"

**Interfacing-** ¾ yd. of 20" to 25" lightweight fusible, such as Pellon®

### E Shirt Dress

45***	2½	2½	2½	2½	2½	2½	2½	2½	2½	2½	Yd
60***	1½	1½	1½	1½	1½	1½	2	2	2	2½	"

**Interfacing-** ¾ yd. of 20" to 25" lightweight fusible, such as Pellon®

### FINISHED GARMENT MEASUREMENTS (Includes Design and Wearing EASE)

<b>A,B,C,D,E Bust</b>	36	37	38	39½	41½	43½	45½	47½	49½	51½	In
<b>Finished back length from base of neck:</b>											
<b>A</b>	39½	39¾	40	40¼	40½	40¾	41	41¼	41½	41¾	In
<b>B</b>	54½	54¾	55	55¼	55½	55¾	56	56¼	56½	56¾	"
<b>C,D,E</b>	35½	35¾	36	36¼	36½	36¾	37	37¼	37½	37¾	"

\*without nap \*\*with nap \*\*\*with or without nap

## JEUNE FEMME/PETITE JEUNE FEMME: ROBE EN TROIS LONGUEURS AVEC CHOIX DE MANCHES

**Tissus:** Chambray, Cotonnades, Crêpe, Crêpe Georgette Double, Vichy, Denim Léger, Toile de Lin, Popeline fine, Shirting, Tissus Soyeux. Prévoyez davantage de tissu pour raccorder les écosais, les rayures ou les motifs unidirectionnels.

**Mercerie:** Fil. **A:** Dix-sept boutons de 1.3cm. **B:** Quinze boutons de 1.3cm. **C:** Dix-neuf boutons de 1.3cm. **D:** Quinze boutons de 1.3cm, un paquet de ruban de biais simple de 1.3cm de large. **E:** Onze boutons de 1.3cm. Demandez les garnitures de Simplicity.

### MESURES NORMALISÉES

<b>Poitrine</b>	78	80	83	87	92	97	102	107	112	117	cm
<b>Taille</b>	58	61	64	67	71	76	81	87	94	99	"
<b>Hanches (23cm au-dessous de la taille)</b>	83	85	88	92	97	102	107	112	117	122	cm
<b>Dos (encolure à taille)</b>	39.5	40	40.5	41.5	42	42.5	43	44	44	44.5	cm
<b>Tailles</b>	6	8	10	12	14	16	18	20	22	24	
<b>Françaises</b>	34	36	38	40	42	44	46	48	50	52	

### A Robe Chemisier

115cm**	2.80	2.90	2.90	3.00	3.00	3.00	3.10	3.30	3.40	3.50	m
150cm**	2.30	2.30	2.40	2.40	2.50	2.50	2.50	2.60	2.70		"

**Entoilage-** 0.70m de 51cm à 64cm, léger, thermocollant tel que Pellon®

### B Robe Chemisier

115cm**	3.50	3.50	3.50	3.60	3.60	3.60	3.60	3.60	3.60	3.70	m
150cm**	2.40	2.40	2.40	2.40	2.90	2.90	3.00	3.00	3.00	3.00	"

**Entoilage-** 0.70m de 51cm à 64cm, léger, thermocollant tel que Pellon®

### C Robe Chemisier

115cm**	2.40	2.60	2.70	2.70	2.80	2.80	2.80	2.80	2.80	2.90	m
150cm**	1.80	1.80	1.80	1.80	1.90	1.90	2.10	2.10	2.20	2.30	"

**Entoilage-** 0.90m de 51cm à 64cm, léger, thermocollant tel que Pellon®

### D Robe Chemisier

115cm**	2.30	2.40	2.40	2.40	2.40	2.50	2.50	2.50	2.50	2.60	m
150cm**	1.60	1.70	1.70	1.70	1.70	1.80	2.10	2.10	2.20	2.30	"

**Entoilage-** 0.70m de 51cm à 64cm, léger, thermocollant tel que Pellon®

### E Robe Chemisier

115cm**	2.30	2.30	2.30	2.40	2.40	2.40	2.40	2.50	2.50	2.50	m
150cm**	1.50	1.50	1.60	1.60	1.60	1.70	1.90	2.00	2.00	2.10	"

**Entoilage-** 0.70m de 51cm à 64cm, léger, thermocollant tel que Pellon®

### MESURES DES VÊTEMENTS FINIS

<b>A,B,C,D,E Poitrine</b>	91.5	94	96.5	100.5	103	111	116	121	126	131	cm
<b>Longueur finie du dos depuis la base du cou:</b>											
<b>A</b>	100.5	101	102	102	103	104	104	105	106	106	cm
<b>B</b>	139	139	140	140	141	142	143	143	144	145	"
<b>C,D,E</b>	90	91	91.5	92	92.5	93	94	94.5	95	96	"

\*sans sens \*\*avec sens \*\*\*avec ou sans sens

TO BE USED FOR INDIVIDUAL PRIVATE HOME USE ONLY AND NOT FOR COMMERCIAL OR MANUFACTURING PURPOSES. / A USAGE PRIVÉ SEULEMENT ET NON À DES FINS COMMERCIALES OU DE PRODUCTION EN SERIE. / PARA USO PRIVADO SOLAMENTE, NO SE PUEDE UTILIZAR CON PROPOSITOS DE COMERCIALIZACION O DE PRODUCCION EN SERIE.