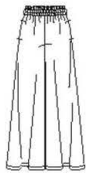


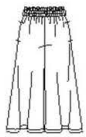
8605

8 PIECES/PIEZAS

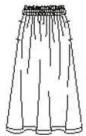
Métrages et Instructions de couture en Français à l'intérieur de l'enveloppe.



A



B



C



D



E

MISSSES' PULL ON SKIRT AND PANTS, EACH IN TWO LENGTHS, AND TIE BELT

Fabrics: Batiks, Chambray, Cotton Types, Gingham, Lightweight Denim, Linen Types. Extra fabric needed to match plaids, stripes or one-way design fabrics.

Notions: Thread, 2 yd. of 5/8" wide elastic. Look for Simplicity Trims.

BODY MEASUREMENTS (For Sizing Help Visit www.simplicity.com/sizehelp)

| | | | | | | |
|---------------------------|---------|--------|---------|--------|---------|----|
| Bust | 30½-31½ | 32½-34 | 36-38 | 40-42 | 44-46 | In |
| Waist | 23-24 | 25-26½ | 28-30 | 32-34 | 37-39 | " |
| Hip-9" below waist | 32½-33½ | 34½-36 | 38-40 | 42-44 | 46-48 | " |
| Back-neck to waist | 15½-15¾ | 16-16¼ | 16½-16¾ | 17-17¼ | 17½-17½ | " |

| | | | | | | |
|-----------------------|-------|-------|-------|-------|-------|--|
| Sizes | XS | S | M | L | XL | |
| | 6-8 | 10-12 | 14-16 | 18-20 | 22-24 | |
| Sizes-European | 32-34 | 36-38 | 40-42 | 44-46 | 48-50 | |

| | | | | | | |
|----------------|----|----|----|----|----|----|
| A Pants | | | | | | |
| 45"*** | 2% | 2½ | 2½ | 2¾ | 3 | Yd |
| 60"*** | 1% | 2% | 2¼ | 2½ | 2½ | " |

| | | | | | | |
|----------------|----|----|----|----|----|----|
| B Pants | | | | | | |
| 45"*** | 2 | 2½ | 2¾ | 2¾ | 2¾ | Yd |
| 60"*** | 1% | 1¼ | 1¾ | 2% | 2% | " |

| | | | | | | |
|----------------|----|----|----|----|----|----|
| C Skirt | | | | | | |
| 45"*** | 2½ | 2½ | 2½ | 2½ | 2¾ | Yd |
| 60"*** | 2% | 2% | 2% | 2% | 2% | " |

| | | | | | | |
|----------------|----|----|----|----|----|----|
| D Skirt | | | | | | |
| 45"*** | 1% | 1% | 1¾ | 2 | 2½ | Yd |
| 60"*** | 1% | 1% | 1¾ | 1¾ | 1¾ | " |

E Tie Belt - 5/8 yd. of 45" or 60"***

FINISHED GARMENT MEASUREMENTS (Includes Design and Wearing EASE)

| | | | | | | |
|----------------------|-----|----|-----|----|-----|----|
| A,B Hip | 41½ | 44 | 48 | 52 | 56 | In |
| C,D Hip | 48½ | 51 | 55 | 59 | 63 | " |
| A Side Length | 38½ | 39 | 39½ | 40 | 40½ | " |
| B Side Length | 31½ | 32 | 32½ | 33 | 33½ | " |
| C Length | 31½ | 32 | 32½ | 33 | 33½ | " |
| D Length | 22 | 22 | 22 | 22 | 22 | " |
| A,B Leg Width | 24½ | 26 | 28 | 30 | 32 | " |
| C Width | 70 | 74 | 78 | 82 | 86 | " |
| D Width | 60 | 64 | 68 | 72 | 76 | " |

*without nap **with nap ***with or without nap

JEUNE FEMME: JUPE ET PANTALON EN DEUX LONGUEURS ET CEINTURE À NOUER

Tissus: Batiks, Chambray, Cottonnades, Vichy, Denim Léger, Mélanges de Lin. Prévoyez davantage de tissu pour raccorder les écossais, rayures ou motifs unidirectionnels.

Mercerie: Fil, 1.80m d'élastique de 1.5cm de large. Demandez les garnitures de Simplicity Trims.

SEÑORITAS: FALDA Y PANTALÓN DE DOS LARGOS Y CINTURÓN DE LAZO

Telas: Batiks, Chambray, Mezclas de Algodones, Guingán, Dril Ligero, Mezclas de Lino.

Se necesita tela adicional para casar cuadros, rayas o telas estampadas en una dirección.

Mercería: Hilo, 1.80m de elástico de 1.5cm de ancho. Pida los adornos de Simplicity Trims.

MESURES NORMALISÉES/MEDIDAS DEL CUERPO

| | | | | | | |
|--|---------|-----------|---------|---------|---------|----|
| Poitrine/Busto | 78-80 | 83-87 | 92-97 | 102-107 | 112-117 | cm |
| Taille/Cintura | 58-61 | 64-67 | 71-76 | 81-87 | 94-99 | " |
| Hanches (23cm au-dessous de la taille)/Caderas (23cm abajo de la cintura) | 83-85 | 88-92 | 97-102 | 107-112 | 117-122 | cm |
| Dos (encolure à taille)/Espalda (escote a cintura) | 39.5-40 | 40.5-41.5 | 42-42.5 | 43-44 | 44-44.5 | cm |

| | | | | | | |
|---------------------------|-------|-------|-------|-------|-------|--|
| Tailles/Tallas | TP/XP | P | M | G | TG/XG | |
| | 6-8 | 10-12 | 14-16 | 18-20 | 22-24 | |
| Tailles-Françaises | 34-36 | 38-40 | 42-44 | 46-48 | 50-52 | |
| Tallas-Europeas | 32-34 | 36-38 | 40-42 | 44-46 | 48-50 | |

| | | | | | | |
|-------------------------------|------|------|------|------|------|---|
| A Pantalon/ A Pantalón | | | | | | |
| 115cm** | 2.20 | 2.20 | 2.30 | 2.70 | 2.70 | m |
| 150cm** | 1.70 | 1.90 | 2.00 | 2.30 | 2.30 | " |

| | | | | | | |
|-------------------------------|------|------|------|------|------|---|
| B Pantalon/ B Pantalón | | | | | | |
| 115cm** | 1.90 | 1.90 | 2.00 | 2.30 | 2.40 | m |
| 150cm** | 1.50 | 1.70 | 1.70 | 1.90 | 2.00 | " |

| | | | | | | |
|------------------------|------|------|------|------|------|---|
| C Jupe/ C Falda | | | | | | |
| 115cm** | 2.20 | 2.20 | 2.20 | 2.30 | 2.40 | m |
| 150cm** | 1.90 | 1.90 | 1.90 | 1.90 | 1.90 | " |

| | | | | | | |
|------------------------|------|------|------|------|------|---|
| D Jupe/ D Falda | | | | | | |
| 115cm** | 1.70 | 1.80 | 1.80 | 1.80 | 2.00 | m |
| 150cm** | 1.40 | 1.40 | 1.40 | 1.40 | 1.50 | " |

E Ceinture à nouer-0.50m de 115cm /150cm**

E Cinturón de lazo-0.50m de 115cm /150cm**

*sans sens **avec sens ***avec ou sans sens *sin pelusa **con pelusa ***sin o con pelusa

TO BE USED FOR INDIVIDUAL PRIVATE HOME USE ONLY AND NOT FOR COMMERCIAL OR MANUFACTURING PURPOSES. / A USAGE PRIVÉ SEULEMENT ET NON À DES FINS COMMERCIALES OU DE PRODUCTION EN SÉRIE. / PARA USO PRIVADO SOLAMENTE, NO SE PUEDE UTILIZAR CON PROPOSITOS DE COMERCIALIZACION O DE PRODUCCION EN SERIE.