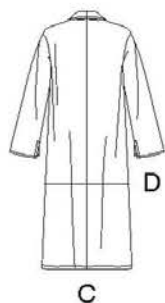
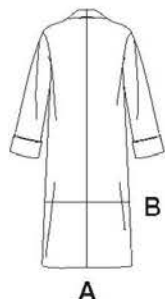


# 8742

7 PIECES/PIEZAS

Medidas e Instrucciones de costura en Español en el Interior del Patrón.



## MISSES' CARDIGANS, EACH IN TWO LENGTHS

**Fabrics:** Boiled Wool, Double Knit, Fleece, Ponte.

**A,B** also in Brocade, Lightweight Denim, Microsuede, Poplin, Wool Types.

**C,D** also in Sweater Knits. For C,D wrong side of fabric will show.

Choose your fabric accordingly.

Extra fabric needed to match plaids, stripes or one-way design fabrics.

**Notions:** Thread. **A,B:** ¾ yd. of ½" wide satin ribbon (opt.). **C,D:** ¾ yd. of ¾" wide clear elastic. Look for Simplicity Trims.

**BODY MEASUREMENTS** (For Sizing Help Visit [www.simplicity.com/sizehelp](http://www.simplicity.com/sizehelp))

<b>Bust</b>	30½-31½	32½-34	36-38	40-42	44-46	In
<b>Waist</b>	23-24	25-26½	28-30	32-34	37-39	"
<b>Hip-9" below waist</b>	32½-33½	34½-36	38-40	42-44	46-48	In
<b>Back-neck to waist</b>	15½-15¾	16-16¼	16½-16¾	17-17¼	17½-17¾	In
<b>Sizes</b>	XS	S	M	L	XL	
	6-8	10-12	14-16	18-20	22-24	
<b>Sizes-European</b>	32-34	36-38	40-42	44-46	48-50	

**A,B,C,D Pocket Lining-** ¾ yd. of 45"\*

### A Cardigan

45"***	3¼	3¾	3¾	3¾	4¼	Yd
60"***	2¾	3	3	3¾	3¾	"

**Interfacing-** 1½ yd. of 20" to 25" lightweight fusible, such as Pellon®

### B Cardigan

45"***	2¾	3¾	3¾	3¾	3½	Yd
60"***	2¼	2¾	2½	2¾	2¾	"

**Interfacing-** 1¾ yd. of 20" to 25" lightweight fusible, such as Pellon®

### C Cardigan

60"***	2¼	2¾	3¾	3¾	3½	Yd
--------	----	----	----	----	----	----

### D Cardigan

60"***	1¾	1¾	2¼	2¾	2¾	Yd
--------	----	----	----	----	----	----

**FINISHED GARMENT MEASUREMENTS** (Includes Design and Wearing EASE)

**Finished back length from base of neck:**

<b>A,C</b>	46½	47	47½	48	48½	In
<b>B</b>	31½	32	32½	33	33½	"
<b>D</b>	30	30½	31	31½	32	"

\*without nap \*\*with nap \*\*\*with or without nap

## JEUNE FEMME: CARDIGANS EN DEUX LONGUEURS

**Tissus:** Laine Cardée, Jersey Double, Molleton, Jersey Ponte. **A,B** en Brocart, Denim Léger, Micro-Suédine, Popeline fine, Lainages aussi. **C,D** en Jersey pour Sweater aussi. Pour C,D l'envers du tissu sera visible. Choisissez votre tissu en conséquence. Prévoyez davantage de tissu pour raccorder les écossais, les rayures ou les motifs unidirectionnels.

**Mercerie:** Fil. **A,B:** 0.70m de ruban de satin de 1.3cm de large (facult.). **C,D:** 0.40m d'élastique transparent de 1cm de large. Demandez les garnitures de Simplicity.

### MESURES NORMALISÉES

<b>Poitrine</b>	78-80	83-87	92-97	102-107	112-117	cm
<b>Taille</b>	58-61	64-67	71-76	81-87	94-99	"
<b>Hanches (23cm au-dessous de la taille)</b>	83-85	88-92	97-102	107-112	117-122	cm
<b>Dos (encolure à taille)</b>	39.5-40	40.5-41.5	42-42.5	43-44	44-44.5	cm
<b>Tailles</b>	TP	P	M	G	TG	
	6-8	10-12	14-16	18-20	22-24	
<b>Tailles-Françaises</b>	34-36	38-40	42-44	46-48	50-52	

**A,B,C,D Doublure de la Poche-** 0.30m de 115cm\*

### A Cardigan

115cm**	2.90	3.30	3.40	3.50	3.70	m
150cm**	2.40	2.70	2.70	3.00	3.10	"

**Entoilage-** 1.50m de 51cm à 64cm, léger, thermocollant tel que Pellon®

### B Cardigan

115cm**	2.70	2.80	2.90	3.00	3.20	m
150cm**	2.00	2.20	2.20	2.60	2.70	"

**Entoilage-** 1.20m de 51cm à 64cm, léger, thermocollant tel que Pellon®

### C Cardigan

150cm**	1.90	2.10	2.80	2.90	3.20	m
---------	------	------	------	------	------	---

### D Chaqueta

150cm**	1.60	1.70	2.00	2.20	2.50	m
---------	------	------	------	------	------	---

### MESURES DES VÊTEMENTS FINIS

**Longueur finie du dos depuis la base du cou:**

<b>A,C</b>	118	120	121	122	123	cm
<b>B</b>	80	81.5	82.5	84	85	"
<b>D</b>	76	77.5	78.5	80	81.5	"

\*sans sens \*\*avec sens \*\*\*avec ou sans sens

TO BE USED FOR INDIVIDUAL PRIVATE HOME USE ONLY AND NOT FOR COMMERCIAL OR MANUFACTURING PURPOSES. / A USAGE PRIVÉ SEULEMENT ET NON À DES FINS COMMERCIALES OU DE PRODUCTION EN SÉRIE. / PARA USO PRIVADO SOLAMENTE, NO SE PUEDE UTILIZAR CON PROPOSITOS DE COMERCIALIZACION O DE PRODUCCION EN SERIE