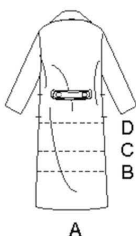


8797

9 PIECES/PIEZAS



MISSES' LOOSE-FITTING LINED COAT IN FOUR LENGTHS

Fabrics: Denim, Low-Pile Fur-Like fabrics, lightweight Melton, Minky Fleece, Sherpa Fleece, Wool Types. Extra fabric needed to match plaids, stripes or one-way design fabrics.

Notions: Thread, two or three 1" buttons. Look for Simplicity Trims.

BODY MEASUREMENTS (For Sizing Help Visit www.simplicity.com/sizehelp)

Bust	30½-31½	32½-34	36-38	40-42	44-46	In
Waist	23-24	25-26½	28-30	32-34	37-39	"
Hip-9" below waist	32½-33½	34½-36	38-40	42-44	46-48	"
Back-neck to waist	15½-15¾	16-16¼	16½-16¾	17-17¼	17½-17¾	"
Sizes	XS	S	M	L	XL	
	6-8	10-12	14-16	18-20	22-24	
Sizes-European	32-34	36-38	40-42	44-46	48-50	

A Coat						
60***	¾	¾	¾	¾	4	Yd
Lining						
45**	2%	¾	¾	¾	4	Yd

Interfacing- ¾ yd. of 20" to 25" medium-weight sew-in or fusible, such as Pellon®

B Coat						
60***	2¼	3	3	¾	¾	Yd
Lining						
45**	2¼	2%	¾	¾	¾	Yd

Interfacing- 2% yd. of 20" to 25" medium-weight sew-in or fusible, such as Pellon®

C Coat						
60***	2%	2%	2%	3	¾	Yd
Lining						
45**	2%	2%	2%	2%	3	Yd

Interfacing- 2% yd. of 20" to 25" medium-weight sew-in or fusible, such as Pellon®

D Coat						
60***	2¼	2¼	2%	2%	2%	Yd
Lining						
45**	2	2¼	2%	2%	2%	Yd

Interfacing- 1% yd. of 20" to 25" medium-weight sew-in or fusible, such as Pellon®

FINISHED GARMENT MEASUREMENTS (Includes Design and Wearing EASE)

A,B,C,D Bust	43¾	46	50	54	58	In
Finished back length from base of neck:						
A	49¾	50	50½	51	51½	In
B	38¾	39	39¾	40	40¾	"
C	33¾	34	34¾	35	35¾	"
D	25½	26	26½	27	27½	"

*without nap **with nap ***with or without nap

JEUNE FEMME: MANTEAU DOUBLÉ AMPLIE EN QUATRE LONGUEURS

Tissus: Denim, Fourures Synthétiques à poil ras, Melton léger, Molleton doux, Molleton Sherpa, Lainages. Prévoyez davantage de tissu pour raccorder les écosais, les rayures ou les motifs unidirectionnels.

Mercerie: Fil, deux ou trois boutons de 2.5cm. Demandez la mercerie Simplicity.

SEÑORITAS: ABRIGO FORRADO AMPLIO EN CUATRO LARGOS

Telas: Dril, Pielés Sintéticas de Pelo corto, Melton ligero, Muletón suave, Muletón Sherpa, Mezclas de Lanas. Se necesita tela adicional para casar cuadros, rayas o telas estampadas en una dirección.

Mercería: Hilo, dos o tres botones de 2.5cm. Pida los adornos de Simplicity Trims.

MESURES NORMALISÉES/MEDIDAS DEL CUERPO

Poitrine/Busto	78-80	83-87	92-97	102-107	112-117	cm
Taille/Cintura	58-61	64-67	71-76	81-87	94-99	"

Hanches (23cm au-dessous de la taille)/Caderas (23cm abajo de la cintura)

	83-85	88-92	97-102	107-112	117-122	cm
Dos (encolure à taille)/Espalda (escote a cintura)	39.5-40	40.5-41.5	42-42.5	43-44	44-44.5	cm

Tailles/Tallas	TP/XP	P	M	G	TG/XG	
	6-8	10-12	14-16	18-20	22-24	
Tailles-Françaises	34-36	38-40	42-44	46-48	50-52	
Tallas-Europeas	32-34	36-38	40-42	44-46	48-50	

A Manteau/A Abrigo						
150cm**	3.00	3.20	3.20	3.50	3.70	m
Doublure/Forro						
115cm*	2.40	2.90	3.40	3.40	3.60	m
Entoilage- 2.90m de 51cm à 64cm, moyen, à coudre ou thermocollant tel que Pellon®						
Entretela- 2.90m de 51cm à 64cm, mediana, para coser o adhesiva como Pellon®						

B Manteau/B Abrigo						
150cm**	2.60	2.80	2.80	3.00	3.10	m
Doublure/Forro						
115cm*	2.10	2.40	2.80	2.90	3.00	m
Entoilage- 2.40m de 51cm à 64cm, moyen, à coudre ou thermocollant tel que Pellon®						
Entretela- 2.40m de 51cm à 64cm, mediana, para coser o adhesiva como Pellon®						

C Manteau/C Abrigo						
150cm**	2.40	2.40	2.40	2.70	2.90	m
Doublure/Forro						
115cm*	2.00	2.30	2.50	2.60	2.80	m
Entoilage- 2.10m de 51cm à 64cm, moyen, à coudre ou thermocollant tel que Pellon®						
Entretela- 2.10m de 51cm à 64cm, mediana, para coser o adhesiva como Pellon®						

D Manteau/D Abrigo						
150cm**	2.00	2.10	2.10	2.30	2.40	m
Doublure/Forro						
115cm*	1.80	2.10	2.10	2.20	2.40	m
Entoilage- 1.70m de 51cm à 64cm, moyen, à coudre ou thermocollant tel que Pellon®						
Entretela- 1.70m de 51cm à 64cm, mediana, para coser o adhesiva como Pellon®						

*sans sens **avec sens ***avec ou sans sens *sin pelusa **con pelusa ***sin o con pelusa

TO BE USED FOR INDIVIDUAL PRIVATE HOME USE ONLY AND NOT FOR COMMERCIAL OR MANUFACTURING PURPOSES. / A USAGE PRIVÉ SEULEMENT ET NON À DES FINS COMMERCIALES OU DE PRODUCTION EN SÉRIE. / PARA USO PRIVADO SOLAMENTE, NO SE PUEDE UTILIZAR CON PROPÓSITOS DE COMERCIALIZACIÓN O DE PRODUCCIÓN EN SERIE.