

S8851

15 PIECES/PIEZAS

Medidas e Instrucciones de costura en Español en el Interior del Patrón.

CHILD'S DRESSES

Fabrics: Batiks, Challis, Chambray, Cotton Types, Double Georgette, Gingham, Linen Types, Seersucker. Not suitable for sleepwear. Extra fabric needed to match plaids, stripes or one-way design fabrics.

Notions: Thread, one medium snap.

BODY MEASUREMENTS (For Sizing Help Visit www.simplicity.com/sizehelp)

Chest	22	23	24	25	26	27	In
Waist	20½	21	21½	22	23	23½	"
Hip	—	24	25	26	27	28	"
Back-neck to waist	9	9½	10	10½	11½	12	"
Approx. Height	38	41	44	47	50	52	"
Sizes	3	4	5	6	7	8	

A,B,C,D Bodice Lining

45"*	½	½	½	½	½	½	Yd
------	---	---	---	---	---	---	----

A Dress

45"***	2½	2½	2¾	3	3¼	3¾	Yd
60"***	2	2	2½	2¾	2½	2½	"

A,B Interfacing- ¾ yd. of 20" to 25" lightweight fusible, such as Pellon®

B Dress

45"***	2	2	2½	2¾	2¾	2¾	Yd
60"***	1¾	1¾	1¾	2	2½	2¼	"

C Dress

45"***	2¾	3	3¼	3¾	4¼	4¾	Yd
60"***	2¾	2¾	3	3½	3¾	3¾	"

C,D Interfacing- ¼ yd. of 20" to 25" lightweight fusible, such as Pellon®

D Dress

45"***	1¾	1¾	1¾	2½	2¼	2½	Yd
60"***	1¾	1¾	1¾	1¾	1¾	1¾	"

Contrast Godets

45"***	1½	1¾	1¾	2	2½	2¼	Yd
60"***	1	1	1¼	1¾	1¾	2½	"

FINISHED GARMENT MEASUREMENTS (Includes Design and Wearing EASE)

A,B,C,D Chest	23½	24½	25½	26½	27½	28½	In
---------------	-----	-----	-----	-----	-----	-----	----

Finished back length from base of neck:

A	26½	27½	28¾	30	31¼	32½	In
B,C,D	22½	23½	24¾	26	27¼	28½	"

*without nap **with nap ***with or without nap

ENFANT: ROBES

Tissus: Batiks, Étamine, Chambray, Cotonnades, Crêpe Georgette Double, Vichy, Toile de Lin, Seersucker. Ces modèles ne conviennent pas pour vêtements de nuit. Prévoyez davantage de tissu pour raccorder les écossais, les rayures ou les motifs unidirectionnels.

Mercerie: Fil, une pression moyenne.

MESURES NORMALISÉES

Poitrine	56	58	61	64	66	69	cm
Taille	52	53	55	56	58	60	"
Hanches	—	61	64	66	69	71	"
Dos (encolure à taille)	23	24	25.5	27	29.5	31	"
Taille approx.	97	104	112	119	127	132	"
Tailles	3	4	5	6	7	8	

A,B,C,D Doublure du Corsage

115cm*	0.40	0.40	0.40	0.40	0.50	0.50	m
--------	------	------	------	------	------	------	---

A Robe

115cm**	2.30	2.40	2.50	2.70	2.90	3.10	m
150cm**	1.80	1.80	2.00	2.10	2.30	2.40	"

A,B Entoilage- 0.40m de 51cm à 64cm, léger thermocollant tel que Pellon®

B Robe

115cm**	1.80	1.90	2.30	2.30	2.40	2.50	m
150cm**	1.50	1.50	1.60	1.80	1.90	2.00	"

C Robe

115cm**	2.60	2.70	3.00	3.50	3.90	4.20	m
150cm**	2.40	2.50	2.70	2.90	3.10	3.30	"

C,D Entoilage- 0.20m de 51cm à 64cm, léger thermocollant tel que Pellon®

D Robe

115cm**	1.50	1.60	1.70	1.90	2.10	2.30	m
150cm**	1.10	1.20	1.30	1.50	1.50	1.60	"

Godets Contrastants

115cm**	1.30	1.40	1.60	1.80	2.00	2.10	m
150cm**	0.90	0.90	1.10	1.40	1.70	1.90	"

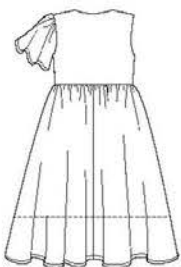
MESURES DES VÊTEMENTS FINIS

A,B,C,D Poitrine	59.5	62	65	67.5	70	72.5	cm
------------------	------	----	----	------	----	------	----

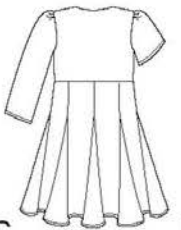
Longueur finie du dos depuis la base du cou:

A	67.5	70	73	76	79	82.5	cm
B,C,D	57	59.5	63	66	69	72.5	"

*sans sens **avec sens ***avec ou sans sens



B



D