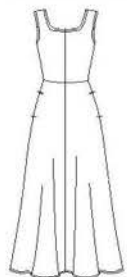
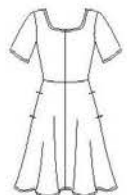


S8874

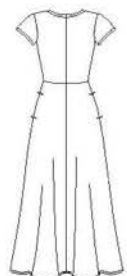
15 PIECES/PIEZAS



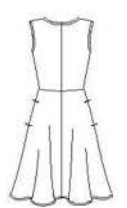
A



B



C



D

MISSSES'/WOMEN'S KNIT DRESS IN TWO LENGTHS WITH NECKLINE VARIATIONS

Fabrics: Sized for stretch knits only: Activewear Knits, Double Knit, Jersey, Spandex Blends, Stretch Velvet. See Pick-A-Knit® Rule. Suitable for Overlock/Serger. Extra fabric needed to match plaids, stripes or one-way design fabrics.

Notions: Thread, ¼" wide elastic- 1 yd. for sizes 10 - 18, 1¼ yd. for sizes 20W - 28W.

BODY MEASUREMENTS (For Sizing Help Visit www.simplicity.com/sizehelp)

Bust	32½	34	36	38	40	42	44	46	48	50	In
Waist	25	26½	28	30	32	35	37	39	41½	44	"
Hip-9" below waist	34½	36	38	40	42	44	46	48	50	52	"
Back-neck to waist	16	16¼	16½	16¾	17	17¼	17½	17¾	17¾	17¾	"
Sizes	10	12	14	16	18	20W	22W	24W	26W	28W	
European	36	38	40	42	44	46	48	50	52	54	

A Dress

60***	2%	2%	2½%	2½%	2¾	3¼	3½	3¾	3¾	4	Yd
-------	----	----	-----	-----	----	----	----	----	----	---	----

B Dress

60***	1%	1%	1¾	1¾	1¾	2¼	2%	2%	2%	2%	Yd
-------	----	----	----	----	----	----	----	----	----	----	----

C Dress

60***	2½	2¾	2¾	2¾	2¾	3½	3½	3¾	3¾	4	Yd
-------	----	----	----	----	----	----	----	----	----	---	----

D Dress

60***	1½	1½	1%	1%	1%	2%	2%	2%	2¼	2¼	Yd
-------	----	----	----	----	----	----	----	----	----	----	----

FINISHED GARMENT MEASUREMENTS (Includes Design and Wearing EASE)

A,B,C,D Bust	33	34½	36½	38½	40½	42½	44½	45½	48½	50½	In
---------------------	----	-----	-----	-----	-----	-----	-----	-----	-----	-----	----

Finished back length from base of neck:

A,C	50½	50¾	51	51¼	51½	54¼	54¼	54¾	55	55¼	In
------------	-----	-----	----	-----	-----	-----	-----	-----	----	-----	----

B,D	34½	34¾	35	35¼	35½	39¼	39½	39¾	40	40¼	"
------------	-----	-----	----	-----	-----	-----	-----	-----	----	-----	---

A,C Width	97½	99	101	103	105	109	111	113	115	117	"
------------------	-----	----	-----	-----	-----	-----	-----	-----	-----	-----	---

B,D Width	64	65½	67½	69½	71½	81½	83½	85½	87½	89½	"
------------------	----	-----	-----	-----	-----	-----	-----	-----	-----	-----	---

*without nap **with nap ***with or without nap

JEUNE FEMME/FEMME: ROBE EN JERSEY EN DEUX LONGUEURS AVEC CHOIX D'ENCOLURES

Tissus: En jerseys extensibles seulement: Jerseys Activewear, Jerseys Doubles, Jersey fin, Mélanges Spandex, Velours Extensible. Voyez la Règle pour Choisir Un Jersey®. Ces modèles conviennent pour la machine Overlock/Surjeteuse. Prévoyez davantage de tissu pour raccorder les écossais, les rayures ou les motifs unidirectionnels.

Mercerie: Fil, élastique de 6mm de large- 1.00m pour les tailles 10 - 18, 1.10m pour les tailles 20W - 28W.

SEÑORITAS/SEÑORAS: VESTIDO EN JERSEY EN DOS LARGOS CON DIFERENTES ESCOTES

Telas: En mallas estirables solamente: Mallas Activewear, Mallas Dobles, Mallas finas, Mezclas Spandex, Terciopelo Estirable. Veá la Regla para Escoger las Mallas®. Estos modelos convienen para la máquina Overlock/Sobrehiladora. Se necesita tela adicional para casar cuadros, rayas o telas estampadas en una dirección.

Mercería: Hilo, elástico de 6mm de ancho- 1.00m para las tallas 10 - 18, 1.10m para las tallas 20W - 28W.

MESURES NORMALISÉES/MEDIDAS DEL CUERPO

Poitrine/Busto	83	87	92	97	102	107	112	117	122	127	cm
-----------------------	----	----	----	----	-----	-----	-----	-----	-----	-----	----

Taille/Cintura	64	67	71	76	81	89	94	99	105	112	"
-----------------------	----	----	----	----	----	----	----	----	-----	-----	---

Hanches (23cm au-dessous de la taille)/Caderas (23cm abajo de la cintura)

	88	92	97	102	107	112	117	122	127	132	cm
--	----	----	----	-----	-----	-----	-----	-----	-----	-----	----

Dos (encolure à taille)/Espalda (escote a cintura)

	40.5	41.5	42	42.5	43	44	44	44.5	45	45	cm
--	------	------	----	------	----	----	----	------	----	----	----

Tailles/Tallas	10	12	14	16	18	20W	22W	24W	26W	28W	
-----------------------	----	----	----	----	----	-----	-----	-----	-----	-----	--

Françaises	38	40	42	44	46	48	50	52	54	56	
-------------------	----	----	----	----	----	----	----	----	----	----	--

Europeas	36	38	40	42	44	46	48	50	52	54	
-----------------	----	----	----	----	----	----	----	----	----	----	--

A Robe/A Vestido

150cm**	2.20	2.20	2.40	2.40	2.50	3.00	3.20	3.40	3.50	3.70	m
---------	------	------	------	------	------	------	------	------	------	------	---

B Robe/B Vestido

150cm**	1.50	1.50	1.60	1.60	1.60	2.10	2.10	2.10	2.10	2.20	m
---------	------	------	------	------	------	------	------	------	------	------	---

C Robe/C Vestido

150cm**	2.30	2.40	2.40	2.50	2.50	3.20	3.20	3.40	3.50	3.70	m
---------	------	------	------	------	------	------	------	------	------	------	---

D Robe/D Vestido

150cm**	1.40	1.40	1.40	1.40	1.50	2.00	2.00	2.00	2.00	2.00	m
---------	------	------	------	------	------	------	------	------	------	------	---

*sans sens **avec sens ***avec ou sans sens *sin pelusa **con pelusa ***sin o con pelusa