

# S8885

## 8 PIECES/PIEZAS

### MISSES' SKIRT AND PANTS, EACH IN TWO LENGTHS

Fabrics: Challis, Crepe, Double Georgette, Lightweight Denim, Linen Types, Satin, Shirtings, Silky Types. Extra fabric needed to match plaids, stripes or one-way design fabrics.

Notions: Thread, one 7" invisible zipper. **A,D:** Two hook closures.

#### BODY MEASUREMENTS (For Sizing Help Visit [www.simplicity.com/sizehelp](http://www.simplicity.com/sizehelp))

Bust	30½	31½	32½	34	36	38	40	42	44	ln
Waist	23	24	25	26½	28	30	32	34	37	"
Hip-9" below waist	32½	33½	34½	36	38	40	42	44	46	"
Back-neck to waist	15½	15¾	16	16¼	16½	16¾	17	17¼	17½	"
Sizes	6	8	10	12	14	16	18	20	22	
European	32	34	36	38	40	42	44	46	48	

#### A Skirt

45"***	4%	4%	4%	4%	4¼	4¼	4¼	4%	4½	Yd
60"***	3%	3%	3%	3%	3¾	3¾	3¾	3%	3%	"

Interfacing- ¼ yd. of 20" to 25" lightweight fusible, such as Pellon®

#### B Skirt

45"***	2%	2%	2%	2¼	2¼	2%	2%	2%	2½	Yd
60"***	1%	1%	1½	1½	1½	1½	1½	1½	1%	"

Interfacing- ¾ yd. of 20" to 25" lightweight fusible, such as Pellon®

#### C Pants

45"***	2%	2%	2%	2%	2½	2½	2¾	2¾	3¾	Yd
60"***	2½	2½	2½	2½	2½	2%	2%	2%	2½	"

Interfacing- ¾ yd. of 20" to 25" lightweight fusible, such as Pellon®

#### D Pants

45"***	2¼	2¼	2¼	2¼	2¼	2¼	2¼	2½	3	Yd
60"***	2½	2½	2½	2¼	2¼	2¼	2¼	2¼	2¼	"

Interfacing- 1¼ yd. of 20" to 25" lightweight fusible, such as Pellon®

#### FINISHED GARMENT MEASUREMENTS (Includes Design and Wearing EASE)

A,B Hip	39½	40½	41½	43	45	47	49	51	54	ln
C,D Hip	35½	36½	37½	39	41	43	45	47	50	"
A Length	40	40	40	40	40	40	40	40	40	"
B Length	23	23	23	23	23	23	23	23	23	"
C Side Length	39½	39¾	40	40¼	40½	40¾	41	41¼	41½	"
D Side Length	33½	33¾	34	34¼	34½	34¾	35	35¼	35½	"
A Width	94	95	96	97½	99½	101½	102½	104½	106½	"
B Width	64½	65½	66½	68	70	72	74	76	78	"
C Leg Width	33	34	35	36	37	38	39	40	41	"
D Leg Width	32	32½	33	33½	34	34½	35	35½	36	"

\*without nap \*\*with nap \*\*\*with or without nap

### JEUNE FEMME: JUPE ET PANTALON EN DEUX LONGUEURS

Tissus: Étamine, Crêpe, Crêpe Georgette Double, Denim Léger, Toile de Lin, Satin, Shirtings, Tissus Soyeux. Prévoyez davantage de tissu pour raccorder les écossois, les rayures ou les motifs unidirectionnels.

Mercerie: Fil, une glissière invisible de 18cm. **A,D:** Deux agrafes.

### SEÑORITAS: FALDA Y PANTALÓN EN DOS LARGOS

Telas: Chali, Crepé, Crepé Georgette Doble, Dril Ligero, Tela de Lino, Satén, Shirtings, Telas Sedosas.

Se necesita tela adicional para casar cuadros, rayas o telas estampadas en una dirección.

Mercería: Hilo, una cremallera invisible de 18cm. **A,D:** Dos corchetes.

#### MESURES NORMALISÉES/MEDIDAS DEL CUERPO

Poitrine/Busto	78	80	83	87	92	97	102	107	112	cm
Taille/Cintura	58	61	64	67	71	76	81	87	94	"
Hanches (23cm au-dessous de la taille)/Caderas (23cm abajo de la cintura)	83	85	88	92	97	102	107	112	117	cm
Dos (encolure à taille)/Espalda (escote a cintura)	39.5	40	40.5	41.5	42	42.5	43	44	44	cm
Tailles/Tallas	6	8	10	12	14	16	18	20	22	
Françaises	34	36	38	40	42	44	46	48	50	
Europeas	32	34	36	38	40	42	44	46	48	

#### A Jupe/A Falda

115cm**	3.70	3.70	3.80	3.80	3.80	3.90	3.90	4.00	4.10	m
150cm**	3.30	3.30	3.30	3.30	3.40	3.40	3.50	3.50	3.50	"

Entoilage- 1.10m de 51cm à 64cm, léger, thermocollant tel que Pellon®

Entretela- 1.10m de 51cm a 64cm, ligera, adhesiva como Pellon®

#### B Jupe/B Falda

115cm**	1.90	2.00	2.00	2.00	2.10	2.10	2.20	2.20	2.20	m
150cm**	1.30	1.30	1.30	1.30	1.30	1.40	1.40	1.40	1.40	"

Entoilage- 0.70m de 51cm à 64cm, léger, thermocollant tel que Pellon®

Entretela- 0.70m de 51cm a 64cm, ligera, adhesiva como Pellon®

#### C Pantalon/C Pantalón

115cm**	2.40	2.40	2.40	2.40	2.40	2.40	2.50	2.60	3.40	m
150cm**	2.30	2.30	2.30	2.30	2.30	2.30	2.40	2.40	2.40	"

Entoilage- 0.70m de 51cm à 64cm, léger, thermocollant tel que Pellon®

Entretela- 0.70m de 51cm a 64cm, ligera, adhesiva como Pellon®

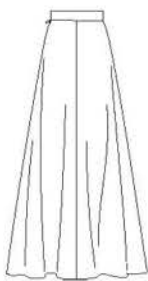
#### D Pantalon/D Pantalón

115cm**	2.00	2.00	2.00	2.00	2.00	2.00	2.00	2.30	2.70	m
115cm**	2.00	2.00	2.00	2.00	2.00	2.00	2.00	2.00	2.10	"

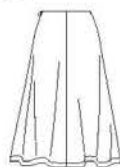
Entoilage- 1.10m de 51cm à 64cm, léger, thermocollant tel que Pellon®

Entretela- 1.10m de 51cm a 64cm, ligera, adhesiva como Pellon®

\*sans sens \*\*avec sens \*\*\*avec ou sans sens \*sin pelusa \*\*con pelusa \*\*\*sin o con pelusa



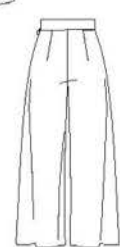
A



B



C



D