

S8889

20 PIECES/PIEZAS

Medidas e Instrucciones de costura en Español en el Interior del Patrón.

MISSES' SHIRT AND WIDE LEG PANTS

Fabrics: Cotton Types, Linen Types. **A** also in Chambray, Poplin, Shirtings.

B also in Challis, Crepe, Gabardine. Extra fabric needed to match plaids, stripes or one-way design fabrics.

Notions: Thread. **A:** Six ½" buttons. **B:** Nine ⅝" buttons.

BODY MEASUREMENTS (For Sizing Help Visit www.simplicity.com/sizehelp)

| | | | | | | | | | | | |
|---------------------------|-----|-----|-----|-----|-----|-----|----|-----|-----|-----|----|
| Bust | 30½ | 31½ | 32½ | 34 | 36 | 38 | 40 | 42 | 44 | 46 | In |
| Waist | 23 | 24 | 25 | 26½ | 28 | 30 | 32 | 34 | 37 | 39 | " |
| Hip-9" below waist | 32½ | 33½ | 34½ | 36 | 38 | 40 | 42 | 44 | 46 | 48 | In |
| Back-neck to waist | 15½ | 15¾ | 16 | 16¼ | 16½ | 16¾ | 17 | 17¼ | 17¾ | 17½ | In |
| Sizes | 6 | 8 | 10 | 12 | 14 | 16 | 18 | 20 | 22 | 24 | |
| European | 32 | 34 | 36 | 38 | 40 | 42 | 44 | 46 | 48 | 50 | |

A Shirt

| | | | | | | | | | | | |
|--------|----|----|----|----|----|----|----|----|----|----|----|
| 45"*** | 1½ | 1½ | 1½ | 1½ | 1½ | 1½ | 1½ | 1½ | 1½ | 1½ | Yd |
| 60"*** | 1¼ | 1¼ | 1¼ | 1¼ | 1¼ | 1½ | 1½ | 1½ | 1½ | 1½ | " |

Interfacing- ⅜ yd. of 20" to 25" lightweight fusible, such as Pellon®

B Pants

| | | | | | | | | | | | |
|--------|----|----|----|----|----|----|----|----|----|----|----|
| 45"*** | 2¾ | 2¾ | 3¾ | 3¾ | 3¾ | 3¾ | 3¾ | 3¾ | 3¾ | 3¾ | Yd |
| 60"*** | 1¾ | 2 | 2½ | 2½ | 2½ | 2½ | 2½ | 2½ | 3 | 3 | " |

Interfacing- 1¾ yd. of 20" to 25" lightweight fusible, such as Pellon®

FINISHED GARMENT MEASUREMENTS (Includes Design and Wearing EASE)

| | | | | | | | | | | | |
|--|-----|-----|-----|-----|-----|-----|-----|-----|-----|-----|----|
| A Bust | 36 | 37 | 38 | 39½ | 41½ | 43½ | 45½ | 47½ | 49½ | 51½ | In |
| B Hip | 40½ | 41½ | 42½ | 44 | 46 | 48 | 50 | 52 | 55 | 57 | " |
| Finished back length from base of neck: | | | | | | | | | | | |
| A | 20 | 20¼ | 20½ | 20¾ | 21 | 21¼ | 21½ | 21¾ | 22 | 22¼ | In |
| B Side Length | 39½ | 39¾ | 40 | 40¼ | 40½ | 40¾ | 41 | 41¼ | 41¾ | 41¾ | " |
| B Leg Width | 22½ | 23¼ | 24 | 25 | 26 | 27¾ | 28½ | 29¾ | 31½ | 32¾ | " |

*without nap **with nap ***with or without nap

JEUNE FEMME: CHEMISE ET PANTALON À JAMBES LARGES

Tissus: Cotonnades, Toile de Lin. **A** en Chambray, Popeline fine, Shirting aussi.

B en Étamine, Crêpe, Gabardine aussi. Prévoyez davantage de tissu pour raccorder les écossais, les rayures ou les motifs unidirectionnels.

Mercerie: Fil. **A:** Six boutons de 1.3cm. **B:** Neuf boutons de 1.5cm.

MESURES NORMALISÉES

| | | | | | | | | | | | |
|---|------|----|------|------|----|------|-----|-----|-----|------|----|
| Poitrine | 78 | 80 | 83 | 87 | 92 | 97 | 102 | 107 | 112 | 117 | cm |
| Taille | 58 | 61 | 64 | 67 | 71 | 76 | 81 | 87 | 94 | 99 | " |
| Hanches (23cm au-dessous de la taille) | 83 | 85 | 88 | 92 | 97 | 102 | 107 | 112 | 117 | 122 | cm |
| Dos (encolure à taille) | 39.5 | 40 | 40.5 | 41.5 | 42 | 42.5 | 43 | 44 | 44 | 44.5 | cm |
| Tailles | 6 | 8 | 10 | 12 | 14 | 16 | 18 | 20 | 22 | 24 | |
| Françaises | 34 | 36 | 38 | 40 | 42 | 44 | 46 | 48 | 50 | 52 | |

A Chemise

| | | | | | | | | | | | |
|---------|------|------|------|------|------|------|------|------|------|------|---|
| 115cm** | 1.40 | 1.40 | 1.40 | 1.40 | 1.40 | 1.40 | 1.50 | 1.70 | 1.70 | 1.80 | m |
| 150cm** | 1.20 | 1.20 | 1.20 | 1.20 | 1.20 | 1.20 | 1.20 | 1.20 | 1.20 | 1.30 | " |

Entoilage- 0.30m de 51cm à 64cm, léger, thermocollant tel que Pellon®

B Pantalon

| | | | | | | | | | | | |
|---------|------|------|------|------|------|------|------|------|------|------|---|
| 115cm** | 2.60 | 2.60 | 2.80 | 2.80 | 2.80 | 2.90 | 2.90 | 2.90 | 2.90 | 3.00 | m |
| 115cm** | 1.70 | 1.80 | 2.30 | 2.30 | 2.30 | 2.40 | 2.40 | 2.60 | 2.70 | 2.70 | " |

Entoilage- 1.20m de 51cm à 64cm, léger, thermocollant tel que Pellon®

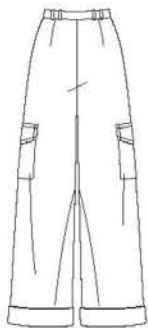
MESURES DES VÊTEMENTS FINIS

| | | | | | | | | | | | |
|---|-------|------|------|-------|------|------|------|------|-----|------|----|
| A Poitrine | 91.5 | 94 | 96.5 | 100.5 | 106 | 111 | 116 | 121 | 126 | 131 | cm |
| B Hanches | 103 | 106 | 108 | 112 | 117 | 122 | 127 | 132 | 140 | 145 | " |
| Longueur finie du dos depuis la base du cou: | | | | | | | | | | | |
| A | 51 | 51.5 | 52 | 52.5 | 53.5 | 54 | 54.5 | 55 | 56 | 56.5 | cm |
| B Longueur du Côté | 100.5 | 101 | 102 | 102 | 103 | 104 | 104 | 105 | 106 | 106 | " |
| B Largeur de la Jambe | 57 | 59 | 61 | 63.5 | 66 | 70.5 | 72.5 | 75.5 | 80 | 83 | " |

*sans sens **avec sens ***avec ou sans sens



A



B