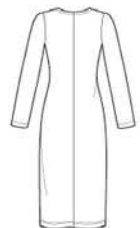


# S8982

## 13 PIECES/PIEZAS

Medidas e Instrucciones de costura en Español en el Interior del Patrón.



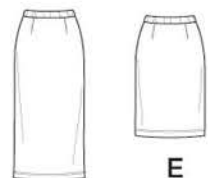
A



B



C



D

E

### MISSSES' KNIT TWO PIECE SWEATER DRESSING

**Fabrics:** Sized for stretch knits only: Interlock, Jersey, Rib Knit, ITY Knits, Bamboo Knit, Modal Knit, Velour, Sweater Knits. See Pick-A-Knit® Rule. Suitable for Overlock/Serger. Extra fabric needed to match plaids, stripes or one-way design fabrics.

**Notions:** Thread. **A:** Six 5/8" buttons. **D,E:** 1 1/4 yd. of 1/4" wide elastic.

#### BODY MEASUREMENTS (For Sizing Help Visit [www.simplicity.com/sizehelp](http://www.simplicity.com/sizehelp))

<b>Bust</b>	30½	31½	32½	34	36	38	40	42	44	In
<b>Waist</b>	23	24	25	26½	28	30	32	34	37	"
<b>Hip-9" below waist</b>										
	32½	33½	34½	36	38	40	42	44	46	In
<b>Back-neck to waist</b>										
	15½	15¾	16	16¼	16½	16¾	17	17¼	17¾	In
<b>Sizes</b>	6	8	10	12	14	16	18	20	22	
<b>European</b>	32	34	36	38	40	42	44	46	48	

<b>A Dress</b>										
60"***	1½	1½	1½	1½	2½	2½	2¼	2¼	2½	Yd

<b>B Top</b>										
60"***	1¼	1½	1½	1½	1½	1½	1½	1½	1½	Yd

<b>C Top</b>										
60"***	1¾	1¾	1¾	1¾	1¾	1½	1½	1½	1½	Yd

<b>D Skirt</b>										
60"***	1	1	1	1	1½	1½	1½	1½	1½	Yd

<b>E Skirt</b>										
60"***	¾	¾	¾	¾	¾	¾	¾	¾	¾	Yd

#### FINISHED GARMENT MEASUREMENTS (Includes Design and Wearing EASE)

<b>A Bust</b>	31½	32½	33½	35	37	39	41	43	45	In
<b>B,C Bust</b>	32½	33½	34½	36	38	40	42	44	46	"
<b>A Hip</b>	36	37	38	39½	41½	43½	45½	47½	49½	"
<b>D,E Hip</b>	34	35	36	37½	39½	41½	43½	45½	48½	"

#### Finished back length from base of neck:

<b>A</b>	47½	47¾	48	48¼	48½	48¾	49	49¼	49½	In
<b>B,C</b>	22½	22¾	23	23¼	23½	23¾	24	24¼	24½	"
<b>D Length</b>	30	30	30	30	30	30	30	30	30	"
<b>E Length</b>	20	20	20	20	20	20	20	20	20	"
<b>A Width</b>	36	37	38	39½	41½	43½	45½	47½	49½	"
<b>B,C Width</b>	32½	33½	34½	36	38	40	42	44	46	"
<b>D,E Width</b>	34	35	36	37½	39½	41½	43½	45½	48½	"

\*without nap \*\*with nap \*\*\*with or without nap

### JEUNE FEMME: ROBE/SWEATER DEUX PIÈCES EN JERSEY

**Tissus:** Pour les jerseys extensibles seulement: Jersey Interlock, Jersey fin, Jersey à Côtes, Jersey ITY, Tricot de Bambou, Tricot Modal, Velours de Coton, Jerseys pour Sweaters. Prévoyez davantage de tissu pour raccorder les écossais, rayures ou motifs unidirectionnels.

**Mercerie:** Fil. **A:** Six boutons de 1.5cm. **D,E:** 1.10m d'élastique de 3.2cm de large.

#### MESURES NORMALISÉES

<b>Poitrine</b>	78	80	83	87	92	97	102	107	112	cm
<b>Taille</b>	58	61	64	67	71	76	81	87	94	"
<b>Hanches (23cm au-dessous de la taille)</b>										
	83	85	88	92	97	102	107	112	117	cm
<b>Dos (encolure à taille)</b>										
	39.5	40	40.5	41.5	42	42.5	43	44	44	cm
<b>Tailles</b>	6	8	10	12	14	16	18	20	22	
<b>Françaises</b>	34	36	38	40	42	44	46	48	50	

<b>A Robe</b>										
150cm**	1.50	1.50	1.50	1.70	1.90	2.00	2.10	2.10	2.10	m

<b>B Haut</b>										
150cm**	1.20	1.30	1.40	1.40	1.40	1.40	1.50	1.50	1.50	m

<b>C Haut</b>										
150cm**	1.30	1.30	1.30	1.30	1.30	1.30	1.30	1.40	1.40	m

<b>D Jupe</b>										
150cm**	0.90	0.90	0.90	0.90	1.00	1.00	1.00	1.00	1.00	m

<b>E Jupe</b>										
150cm**	0.70	0.70	0.70	0.70	0.80	0.80	0.80	0.80	0.80	m

#### MESURES DES VÊTEMENTS FINIS

<b>A Poitrine</b>	80	82.5	85	89	94	99	104	110	115	cm
<b>B,C Poitrine</b>	82.5	85	87.5	91.5	98.5	102	107	112	117	"
<b>A Hanches</b>	91.5	94	98.5	100.5	106	111	116	121	126	"
<b>D,E Hanches</b>	86.5	89	91.5	95	100.5	106	111	116	123	"

#### Longueur finie du depuis la base du cou:

<b>A</b>	121	121	122	122	123	124	125	125	126	cm
<b>B,C</b>	57	58	58.5	59	59.5	60.5	61	61.5	62	"
<b>D Longueur</b>	76	76	76	76	76	76	76	76	76	"
<b>E Longueur</b>	51	51	51	51	51	51	51	51	51	"
<b>A Largeur</b>	91.5	94	96.5	100.5	106	111	116	121	126	"
<b>B,C Largeur</b>	82.5	85	87.5	91.5	96.5	102	107	112	117	"
<b>D,E Largeur</b>	86.5	89	91.5	95	100.5	106	111	116	123	"

\*sans sens \*\*avec sens \*\*\*avec ou sans sens