

S9008

12 PIECES/PIEZAS

MISSES' CAPE COSTUMES

Fabrics: A,B,C,D Contrast Patches, Collar and Front Band in Imitation Leather, Leather-like fabrics. A Lower Front and Back Band and Appliques in Felt. B in Embroidered Mesh, Novelty Mesh, Novelty Sheer. C in Twill. A,D in Sateen, Satin. Extra fabric needed to match plaids, stripes or one-way design fabrics.

Notions: Thread, one pkg. of ½" wide single fold bias tape. A,B: Two sets of ¾" hooks and eyes.

BODY MEASUREMENTS

Bust	32½-34	36-38	40-42	In
Waist	25-26½	28-30	32-34	"
Hip	34½-36	38-40	42-44	"
Back-neck to waist	16-16¼	16½-16¾	17-17¼	"

Sizes	S	M	L	
	10-12	14-16	18-20	
Sizes-European	36-38	40-42	44-46	

A Cape

45***	5¾	5½	5½	Yd
60***	4¾	4¾	4¾	"

Contrast Patches and Collar- ¾ yd. of 45" or 60***

Lower Front and Back Band and Appliques- 1¾ yd. of 54" felt; 1¾ yd. of 72" felt

Lining

45**	4¾	4¾	4½	Yd
------	----	----	----	----

Interfacing- ¾ yd. of 20" to 25" lightweight fusible, such as Pellon®

Paper Backed Fusible Web- 5½ yd. of 15" to 17" wide

B Cape

45***	5¾	5½	5½	Yd
60***	4¾	4¾	4¾	"

Contrast Patches- ¾ yd. of 45" or 60***

C Cape

45***	¾	¾	¾	Yd
60***	¾	¾	¾	"

Contrast Collar, Front Band and Patches- ¾ yd. of 45" or 60***

Interfacing- ¾ yd. of 20" to 25" lightweight fusible, such as Pellon®

Trim- 2¾ yd. of 2" wide ribbon

D Cape

45***	1¼	1¼	1¼	Yd
60***	1	1	1	"

Contrast Patch- ¾ yd. of 45" or 60***

Trims- 2¾ yd. of 2" wide ribbon, 2¾ yd. of 1¼" wide pre-gathered lace

FINISHED GARMENT MEASUREMENTS

Finished back length from base of neck:

A,B	50	50½	51	In
-----	----	-----	----	----

*without nap **with nap ***with or without nap

JEUNE FEMME: COSTUMES DE CAPE

Tissus: A,B,C,D Pièces Contrastantes, Col et Devant Bande en Cuir Synthétique, Tissus Simili-Cuir. A Devant Inférieur et Bande Dos et Applications en Feutrine. B en Filet Brodé, Filet Fantaisie, Tissus Transparents Fantaisi. C en Twill. A,D en Satinette, Satin. Prévoyez davantage de tissu pour raccorder les écossais, rayures ou motifs unidirectionnels.

Mercerie: Fil, un paquet de ruban de biais simple de 1.3cm de large. A,B: Deux ensembles de crochets de 1cm et les yeux.

MESURES NORMALISÉES/MEDIDAS DEL CUERPO

Poitrine	83-87	92-97	102-107	cm
Taille	64-67	71-76	81-87	"
Hanches	88-92	97-102	107-112	"
Dos (encolure à taille)	40.5-41.5	42-42.5	43-44	"

Tailles	P	M	G	
	10-12	14-16	18-20	
Tailles-Françaises	38-40	42-44	46-48	

A Cape

115cm**	5.00	5.00	5.10	m
150cm**	4.30	4.40	4.50	"

Pièces Contrastantes et Col- 0.60m de 115cm ou 150cm**

Devant Inférieur et Bande Dos et Applications- 1.20m de 140cm de feutrine; 1.00m de 183cm feutrine

Doublure

115cm*	3.90	4.00	4.10	m
--------	------	------	------	---

Entoilage- 0.80m de 51cm à 64cm, léger, thermocollant tel que Pellon®

Matière Thermocollante avec Support de Papier- 5.10m de 38cm à 43cm de large

B Cape

115cm**	4.90	5.00	5.00	m
150cm**	4.30	4.40	4.50	"

Pièces Contrastantes- 0.40m de 115cm ou 150cm**

C Cape

115cm**	0.80	0.80	0.80	m
150cm**	0.70	0.70	0.70	"

Col Contrastants, Devant Bande et Pièces- 0.60m de 115cm ou 150cm**

Entoilage- 0.80m de 51cm à 64cm, léger, thermocollant tel que Pellon®

Garniture- 2.50m de ruban de 5cm de large

D Cape

115cm**	1.10	1.10	1.20	m
150cm**	0.90	1.00	1.00	"

Contrastant et Pièce- 0.30m de 115cm ou 150cm**

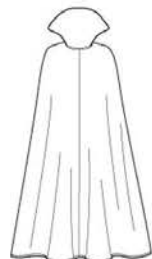
Garnitures- 2.50m de ruban de 5cm de large, 2.20m de dentelle préfroncée de 3.2cm de large

MESURES DES VÊTEMENTS FINI

Longueur finie du depuis la base du cou:

A,B	127	128	130	cm
-----	-----	-----	-----	----

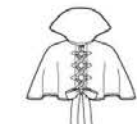
*sans sens **avec sens ***avec ou sans sens



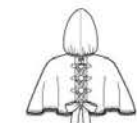
A



B



C



D