

# S9052

16 PIECES/PIEZAS

## MISSES', MEN'S AND TEENS' JACKET IN TWO LENGTHS WITH DETACHABLE HOOD

**Fabrics:** Chino, Cottons, Denim, Poplin, Rip Stop Nylon, Sweatshirt Fleece, Twill.  
Extra fabric needed to match plaids, stripes or one-way design fabrics.

**Notions:** Thread. **A:** One 27" separating zipper, fifteen  $\frac{3}{4}$ " buttons,  $3\frac{7}{8}$  yds. of  $\frac{5}{8}$ " wide grosgrain ribbon (for casing and seams),  $2\frac{1}{4}$  yds. of  $\frac{1}{4}$ " wide cording.

**A,B:** One 12" separating zipper (for hood), two cord stops. **B:** One 36" separating zipper, sixteen  $\frac{3}{4}$ " buttons, 4 yds. of  $\frac{5}{8}$ " wide grosgrain ribbon (for casing and seams),  $2\frac{3}{4}$  yds. of  $\frac{1}{4}$ " wide cording.

Sizes	XS	S	M	L	XL	
<b>A Jacket</b>						
45"***	$3\frac{5}{8}$	$3\frac{3}{4}$	$3\frac{7}{8}$	$4\frac{1}{4}$	$4\frac{3}{8}$	Yd
60"***	$2\frac{7}{8}$	3	3	$3\frac{1}{4}$	$3\frac{3}{8}$	"

**Interfacing-**  $1\frac{1}{2}$  yds. of 20" to 25" lightweight fusible, such as Pellon®

### B Jacket

45"***	$4\frac{1}{8}$	$4\frac{1}{4}$	$4\frac{3}{8}$	$4\frac{5}{8}$	$4\frac{3}{4}$	Yd
60"***	$3\frac{1}{8}$	$3\frac{1}{8}$	$3\frac{1}{4}$	$3\frac{5}{8}$	$3\frac{7}{8}$	"

**Interfacing-**  $1\frac{5}{8}$  yds. of 20" to 25" lightweight fusible, such as Pellon®

## FINISHED GARMENT MEASUREMENTS

<b>A,B Bust/ Chest</b>	44	47	50	54	58	In
<b>Finished back length from base of neck:</b>						
<b>A Length</b>	30	$30\frac{1}{2}$	31	$31\frac{1}{2}$	32	In
<b>B Length</b>	39	$39\frac{1}{2}$	40	$40\frac{1}{2}$	41	"

## JEUNES FEMMES, HOMMES ET ADOLESCENTS: VESTE EN DEUX LONGUEURS AVEC CAPUCHE AMOVIBLE

Tailles	TP	P	M	G	TG	
<b>A Veste</b>						
115cm**	3.30	3.40	3.50	3.90	3.90	m
150cm**	2.60	2.70	2.80	3.00	3.10	"

**Entoilage-** 1.30m de 51cm à 64cm, léger, thermocollant tel que Pellon®

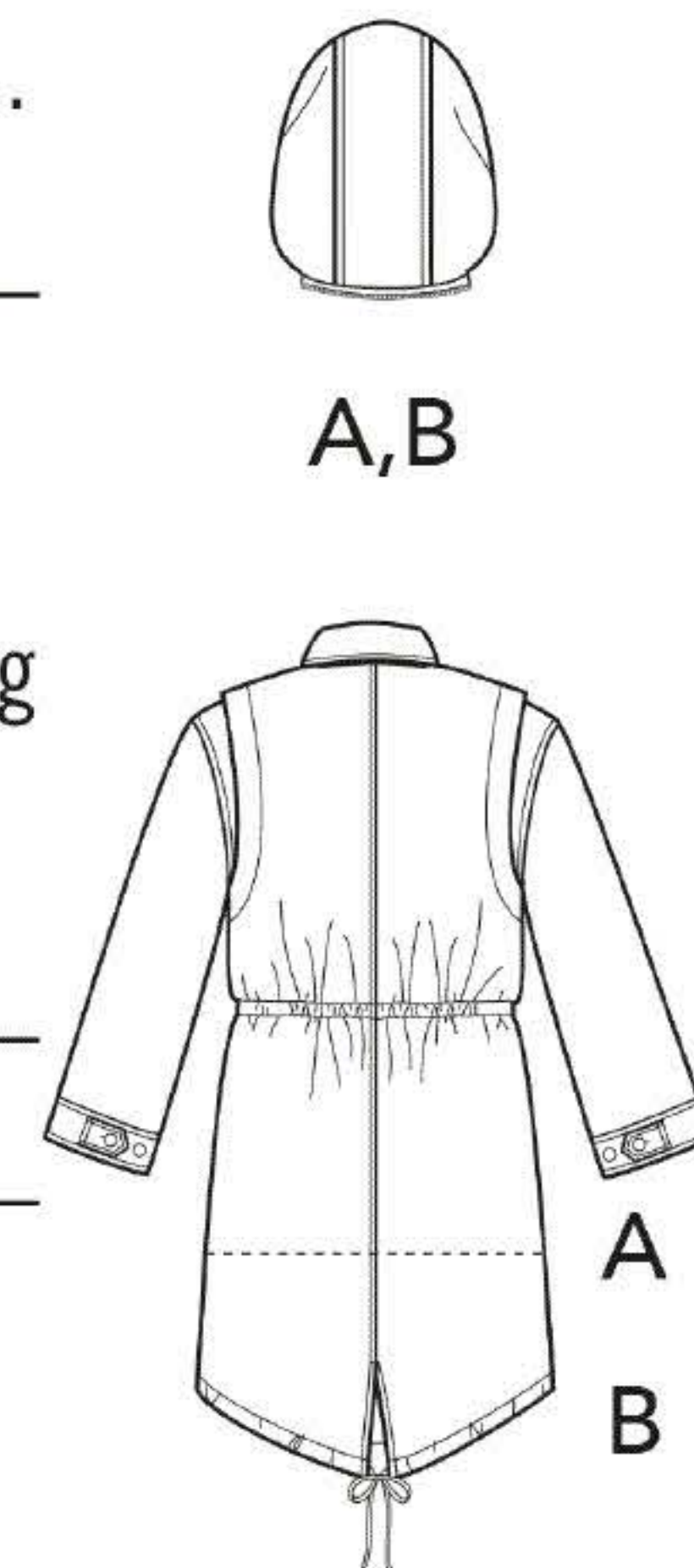
### B Veste

115cm**	3.80	3.80	4.00	4.20	4.40	m
150cm**	2.90	2.90	3.00	3.40	3.50	"

**Entoilage-** 1.40m de 51cm à 64cm, léger, thermocollant tel que Pellon®

\*without nap \*\*with nap \*\*\*with or without nap

\*sans sens \*\*avec sens \*\*\*avec ou sans sens



Medidas e Instrucciones de costura en Español en el Interior del Patrón.