

S9101

6 PIECES/PIEZAS

MISSES' PULLOVER DRESSES IN TWO LENGTHS

Fabrics: Challis, Chambray, Cotton, Cotton Blends, Gingham, Linen, Linen Blends, Shirtings, Silky Types. Extra fabric needed to match plaids, stripes or one-way design fabrics.

Notions: Thread, one pkg. of ½" wide single fold bias tape.

Sizes	XXS	XS	S	M	L	XL	XXL
	4	6-8	10-12	14-16	18-20	22-24	26
Sizes-European	30	32-34	36-38	40-42	44-46	48-50	52

A Dress								
45***	2¾	2⅞	2⅞	2⅞	3½	3⅝	3¾	Yd
60***	2¾	2¾	2¾	2⅞	2⅞	2⅞	3	"

B Dress								
45***	2¾	2¾	2⅞	2⅞	3½	4½	4⅝	Yd
60***	2⅝	2⅝	2¾	2¾	2¾	2⅞	3	"

C Dress								
45***	2⅝	2⅝	2½	2½	3	4⅞	4¼	Yd
60***	2¼	2¼	2⅝	2⅝	2⅝	2½	2½	"

FINISHED GARMENT MEASUREMENTS

A,B,C Bust	34½	37	39½	43½	47½	51½	55½	In
Finished back length from base of neck:								
A,B	45	45½	46	46½	47	47½	48	In
C	38	38½	39	39½	40	40½	41	"
A,B Width	53½	56	58½	62½	66½	70½	74½	"
C Width	50½	53	55½	59½	61½	65½	69½	"

JEUNE FEMME: ROBES PULLOVER EN DEUX LONGUEURS

SEÑORITAS: VESTIDOS PULLOVER EN DOS LARGOS

Tailles/ Tallas	TTP/XXP	TP/XP	P	M	G	TG/XG	TTG/XXG
	4	6-8	10-12	14-16	18-20	22-24	26
Françaises	32	34-36	38-40	42-44	46-48	50-52	54
Europeas	30	32-34	36-38	40-42	44-46	48-50	52

A Robe/ A Vestido								
115cm**	2.50	2.60	2.60	2.70	3.20	3.30	3.40	m
150cm**	2.50	2.50	2.50	2.60	2.60	2.70	2.70	"

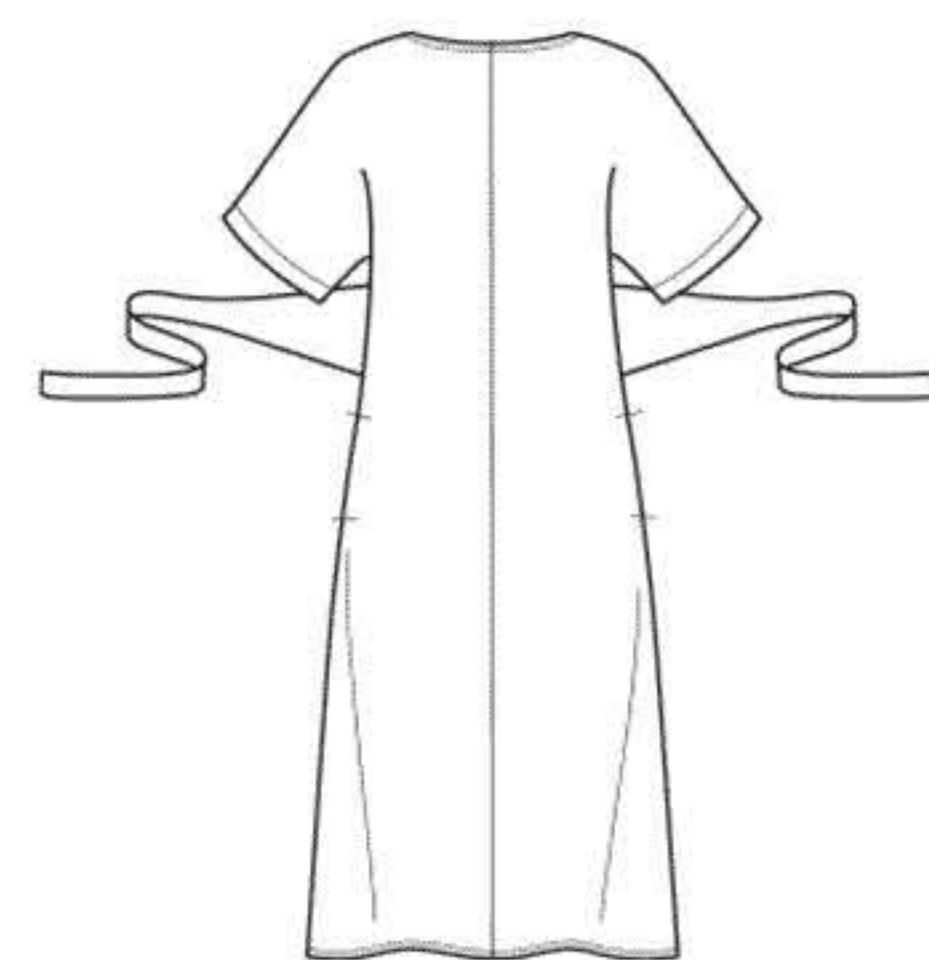
B Robe/ B Vestido								
115cm**	2.50	2.60	2.60	2.60	3.20	4.10	4.20	m
150cm**	2.40	2.40	2.50	2.50	2.50	2.70	2.70	"

C Robe/ C Vestido								
115cm**	2.20	2.20	2.20	2.30	2.70	3.80	3.90	m
150cm**	2.10	2.10	2.10	2.10	2.20	2.30	2.30	"

*without nap **with nap ***with or without nap *sans sens **avec sens ***avec ou sans sens
 *sin pelusa **con pelusa ***sin o con pelusa



A



B



C

Instrucciones de costura en Español en el Interior del Patrón.