

S9102 10 PIECES/PIEZAS

MISSES' CAFTAN AND DRESSES

Fabrics: Batiks, Cotton Lawn, Cotton Types, Gauze, Linen Types, Shirtings, Voile.
Extra fabric needed to match plaids, stripes or one-way design fabrics.

Notions: Thread, two 5/8" buttons. **C,D:** One pkg. of 1/2" wide single fold bias tape.

Sizes	6	8	10	12	14	16	18	20	22	24
European	32	34	36	38	40	42	44	46	48	50

A,B,C,D Interfacing- 3/4 yd. of 20" to 25" lightweight fusible, such as Pellon®

A Caftan											
45***	4 1/8	4 1/8	4 1/4	4 1/4	4 1/4	4 3/8	4 3/4	4 3/4	4 3/4	4 3/4	Yd
60***	3	3 1/8	3 1/8	3 1/8	3 1/8	3 1/8	3 3/4	3 3/4	3 3/4	3 3/4	"

B Dress											
45***	3	3	3 1/8	3 1/8	3 1/8	3 3/8	3 5/8	3 5/8	3 5/8	3 5/8	Yd
60***	2 1/8	2 1/8	2 1/8	2 1/4	2 1/4	2 1/4	2 5/8	2 5/8	2 5/8	2 3/4	"

C Dress											
45***	2 3/4	2 7/8	3 1/8	3 1/8	3 1/8	3 1/8	3 3/8	3 3/8	3 3/8	3 3/8	Yd
60***	2 1/2	2 1/2	2 1/2	2 1/2	2 3/4	2 7/8	2 7/8	2 7/8	3	3	"

D Dress											
45***	2 1/8	2 1/8	2 3/8	2 3/8	2 1/2	2 1/2	2 5/8	2 5/8	2 3/4	2 3/4	Yd
60***	1 7/8	1 7/8	1 7/8	1 7/8	2	2 1/4	2 1/4	2 1/4	2 1/4	2 3/8	"

FINISHED GARMENT MEASUREMENTS

A,B,C,D Bust	35	36	37	38 1/2	40 1/2	42 1/2	44 1/2	46 1/2	48 1/2	50 1/2	In
Finished back length from base of neck:											
A Caftan	55 1/2	55 3/4	56	56 1/4	56 1/2	56 3/4	57 1/4	57 1/2	57 3/4	58	In

JEUNE FEMME: CAFTAN ET ROBES

SEÑORITAS: CAFTÁN Y VESTIDOS

Tailles/ Tallas	6	8	10	12	14	16	18	20	22	24
Françaises	34	36	38	40	42	44	46	48	50	52
Europeas	32	34	36	38	40	42	44	46	48	50

A,B,C,D Entoilage- 0.70m de 51cm à 64cm, léger, thermocollant tel que Pellon®

A,B,C,D Entretela- 0.70m de 51cm a 64cm, ligera, adhesiva como Pellon®

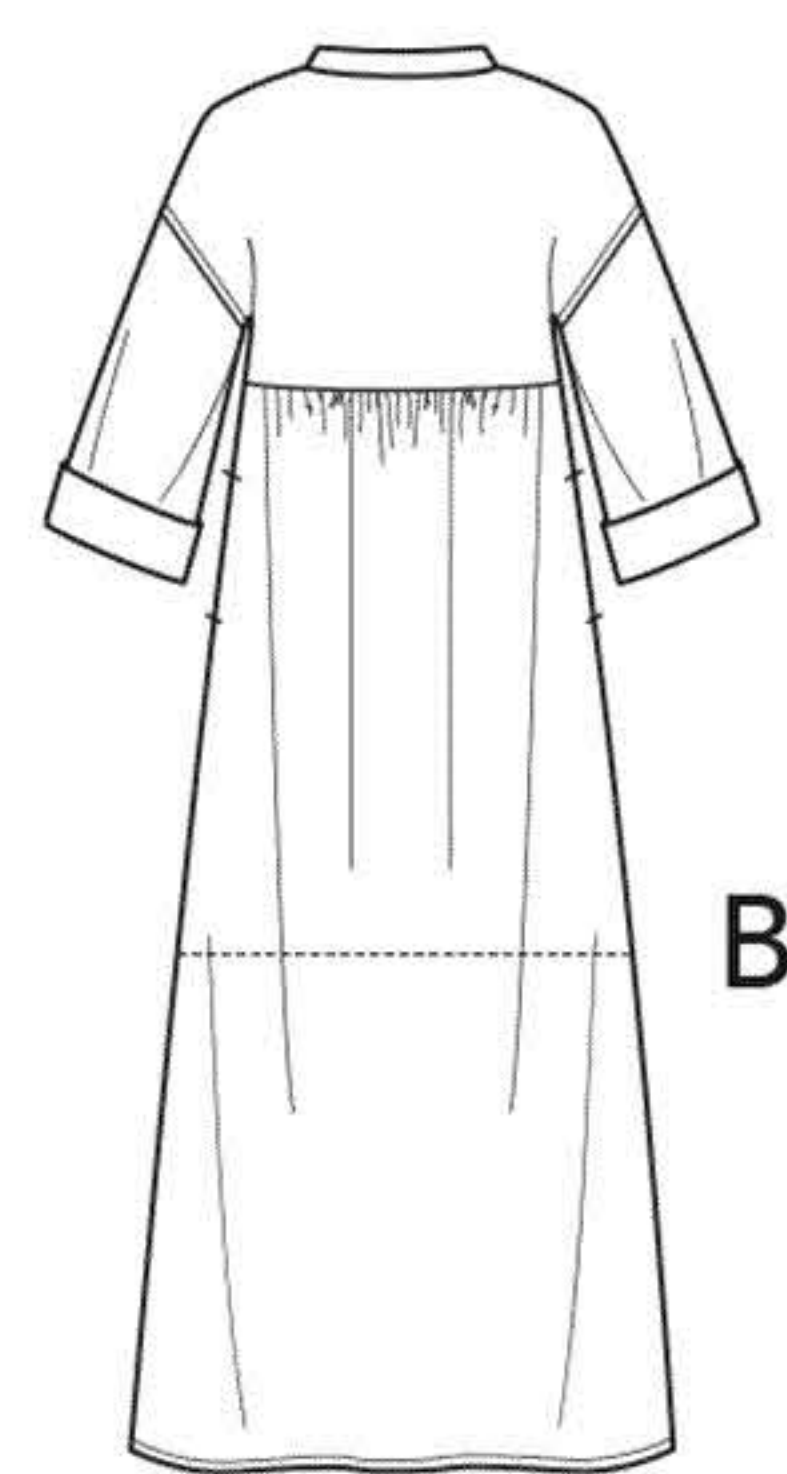
A Caftan/ A Caftán											
115cm**	3.80	3.80	3.80	3.80	3.90	4.00	4.30	4.30	4.40	4.40	m
150cm**	2.80	2.80	2.80	2.80	2.80	2.90	3.40	3.40	3.40	3.50	"

B Robe/ B Vestido											
115cm**	2.80	2.80	2.80	2.80	2.90	3.00	3.30	3.30	3.30	3.40	m
150cm**	2.00	2.00	2.00	2.00	2.00	2.00	2.40	2.40	2.40	2.50	"

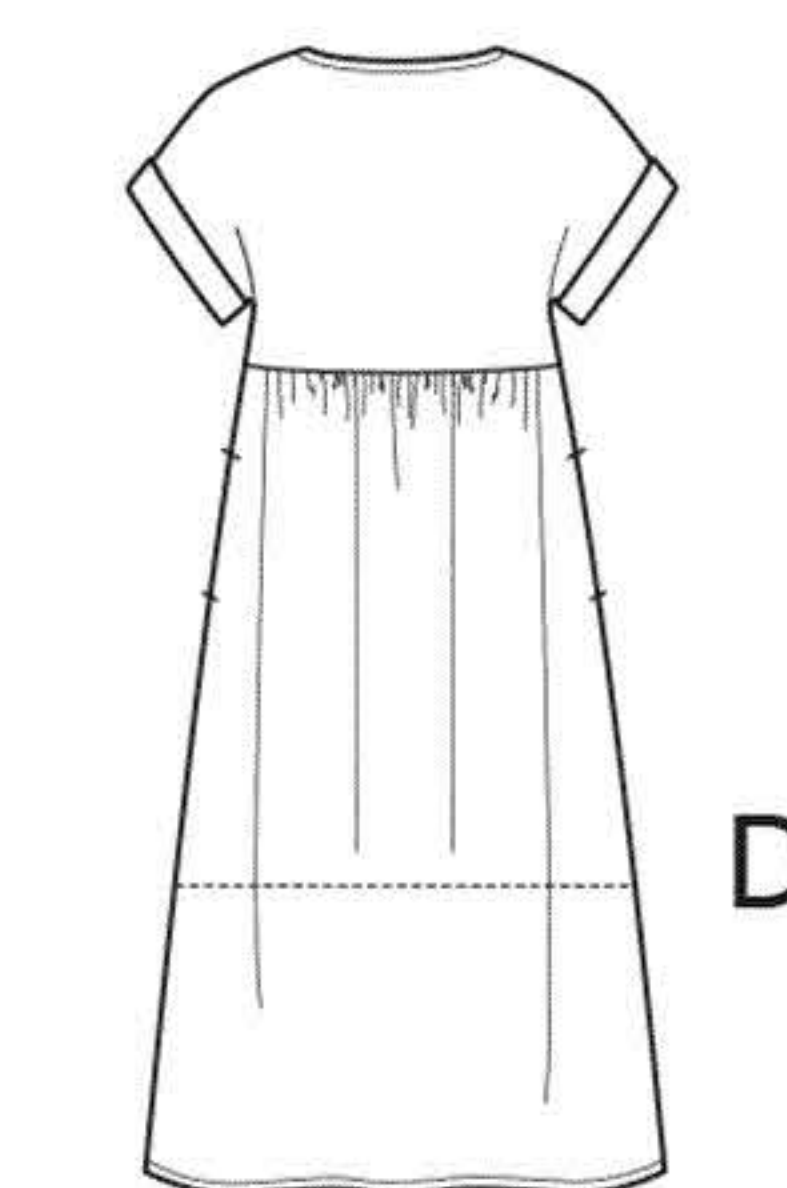
C Robe/ C Vestido											
115cm**	2.60	2.60	2.80	2.80	2.90	2.90	3.00	3.10	3.10	3.10	m
150cm**	2.30	2.30	2.30	2.30	2.50	2.60	2.60	2.70	2.70	2.80	"

D Robe/ D Vestido											
115cm**	2.00	2.00	2.20	2.20	2.20	2.30	2.40	2.40	2.50	2.50	m
150cm**	1.70	1.70	1.70	1.70	1.80	2.00	2.00	2.00	2.10	2.20	"

*without nap **with nap ***with or without nap *sans sens **avec sens ***avec ou sans sens
*sin pelusa **con pelusa ***sin o con pelusa



A



B



C



D

Instrucciones de costura en Español en el Interior del Patrón.