

S9104 15 PIECES/PIEZAS

MISSES' VINTAGE DRESSES WITH SLEEVE AND NECKLINE VARIATIONS

Fabrics: Cotton Types, Gingham, Sateen, Pique, Linens, Shantung, Silky Types. Extra fabric needed to match plaids, stripes or one-way design fabrics.

Notions: Thread, one 22" (55cm) zipper. **A,B,C:** One pair of shoulder pads (opt.).

A: Four $\frac{3}{8}$ " (1cm) buttons. **B:** Two hooks and eyes. **C:** $1\frac{3}{4}$ yds. (1.70m) of $\frac{1}{4}$ " (6mm) wide braid trim (opt.), $\frac{1}{2}$ yd. (0.50m) of $\frac{1}{2}$ " (1.3cm) wide ribbon.

Sizes	6	8	10	12	14	16	18	20	22	
European	32	34	36	38	40	42	44	46	48	

A Dress										
45"***	$2\frac{5}{8}$	$2\frac{5}{8}$	$2\frac{5}{8}$	$2\frac{5}{8}$	$2\frac{5}{8}$	$3\frac{1}{4}$	$3\frac{3}{8}$	$3\frac{3}{8}$	$3\frac{3}{8}$	Yd
60"***	$1\frac{7}{8}$	$1\frac{7}{8}$	$1\frac{7}{8}$	$1\frac{7}{8}$	2	$2\frac{1}{8}$	$2\frac{1}{4}$	$2\frac{1}{4}$	$2\frac{3}{8}$	"

Contrast Collar and Tab- $\frac{1}{2}$ yd. of 45" or 60"***

Interfacing- $\frac{5}{8}$ yd. of 20" to 25" lightweight fusible, such as Pellon®

B Dress										
45"***	$2\frac{5}{8}$	$2\frac{3}{4}$	$2\frac{3}{4}$	$2\frac{3}{4}$	$3\frac{1}{4}$	$3\frac{1}{4}$	$3\frac{3}{8}$	$3\frac{3}{8}$	$3\frac{1}{2}$	Yd
60"***	$1\frac{7}{8}$	$1\frac{7}{8}$	$1\frac{7}{8}$	$1\frac{7}{8}$	$1\frac{7}{8}$	$2\frac{1}{8}$	$2\frac{1}{8}$	$2\frac{1}{2}$	$2\frac{5}{8}$	"

Interfacing- $\frac{3}{8}$ yd. of 20" to 25" lightweight fusible, such as Pellon®

C Dress										
45"***	$2\frac{3}{8}$	$2\frac{3}{8}$	$2\frac{3}{8}$	$2\frac{3}{8}$	$2\frac{5}{8}$	$2\frac{5}{8}$	$2\frac{5}{8}$	$2\frac{5}{8}$	$2\frac{5}{8}$	Yd
60"***	$1\frac{1}{2}$	$1\frac{5}{8}$	$1\frac{5}{8}$	$1\frac{5}{8}$	$1\frac{3}{4}$	$1\frac{7}{8}$	$1\frac{7}{8}$	2	$2\frac{1}{4}$	"

Contrast Collar- $\frac{1}{2}$ yd. of 45" or 60"***

Interfacing- $\frac{3}{4}$ yd. of 20" to 25" lightweight fusible, such as Pellon®

D Dress										
45"***	$2\frac{3}{8}$	$2\frac{3}{8}$	$2\frac{3}{8}$	$2\frac{1}{2}$	$2\frac{3}{4}$	$2\frac{7}{8}$	$2\frac{7}{8}$	$2\frac{7}{8}$	$2\frac{7}{8}$	Yd
60"***	$1\frac{7}{8}$	$1\frac{7}{8}$	2	2	2	$2\frac{1}{8}$	$2\frac{1}{8}$	$2\frac{1}{4}$	$2\frac{1}{4}$	"

Interfacing- 1 yd. of 20" to 25" lightweight fusible, such as Pellon®

FINISHED GARMENT MEASUREMENTS

A,B,C,D Bust	35	36	37	$38\frac{1}{2}$	$40\frac{1}{2}$	$42\frac{1}{2}$	$44\frac{1}{2}$	$46\frac{1}{2}$	$49\frac{1}{2}$	In
Finished back length from base of neck:										
A,B,C,D Length	$40\frac{1}{2}$	$40\frac{3}{4}$	41	$41\frac{1}{4}$	$41\frac{1}{2}$	$41\frac{3}{4}$	42	$42\frac{1}{4}$	$42\frac{1}{2}$	In
A,B,C,D Width	$45\frac{1}{2}$	$46\frac{1}{2}$	$47\frac{1}{2}$	49	51	53	55	57	59	"

JEUNE FEMME: ROBES CLASSIQUES AVEC VARIATIONS DE MANCHES ET D'ENCOLURES

Tailles	6	8	10	12	14	16	18	20	22	
Françaises	34	36	38	40	42	44	46	48	50	

A Robe										
115cm**	2.40	2.40	2.40	2.40	2.40	3.00	3.00	3.10	3.10	m
150cm**	1.70	1.70	1.70	1.70	1.80	1.90	2.00	2.10	2.10	"

Col et Patte Contrastante- 0.50m de 115cm ou 150cm**

Entoilage- 0.60m de 51cm à 64cm, léger, thermocollant tel que Pellon®

B Robe										
115cm**	2.40	2.50	2.50	2.50	2.90	3.00	3.00	3.10	3.20	m
150cm**	1.70	1.70	1.70	1.70	1.80	1.90	2.00	2.20	2.40	"

Entoilage- 0.30m de 51cm à 64cm, léger, thermocollant tel que Pellon®

C Robe										
115cm**	2.20	2.20	2.20	2.20	2.40	2.40	2.40	2.40	2.40	m
150cm**	1.40	1.50	1.50	1.50	1.50	1.70	1.70	1.80	2.00	"

Col Contrastante- 0.50m de 115cm ou/o 150cm**

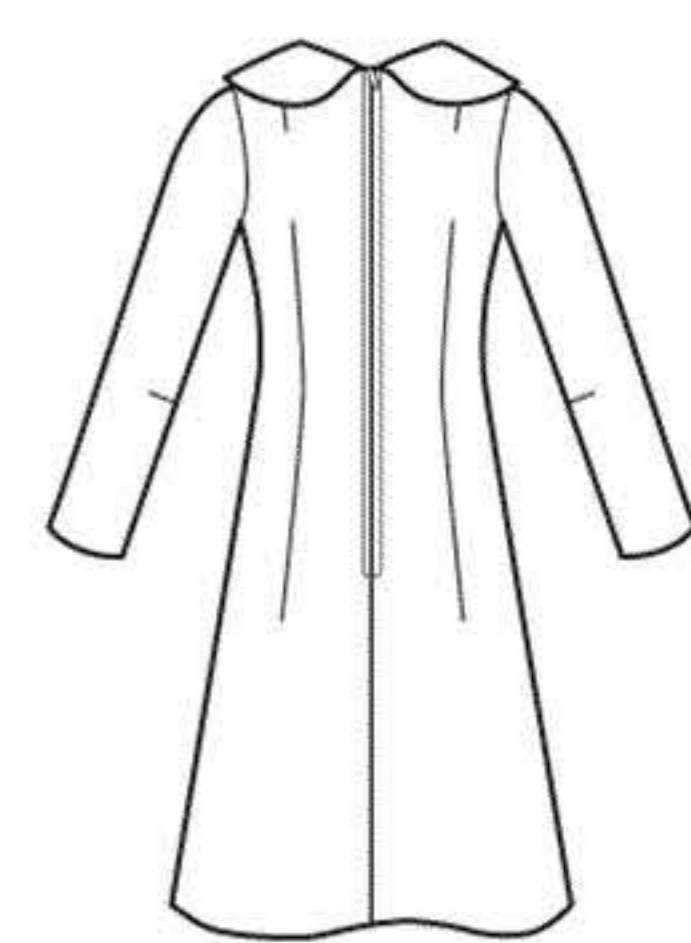
Entoilage- 0.70m de 51cm à 64cm, léger, thermocollant tel que Pellon®

D Robe										
115cm**	2.20	2.20	2.20	2.30	2.50	2.60	2.60	2.60	2.60	m
150cm**	1.70	1.70	1.80	1.90	1.90	1.90	2.00	2.10	2.10	"

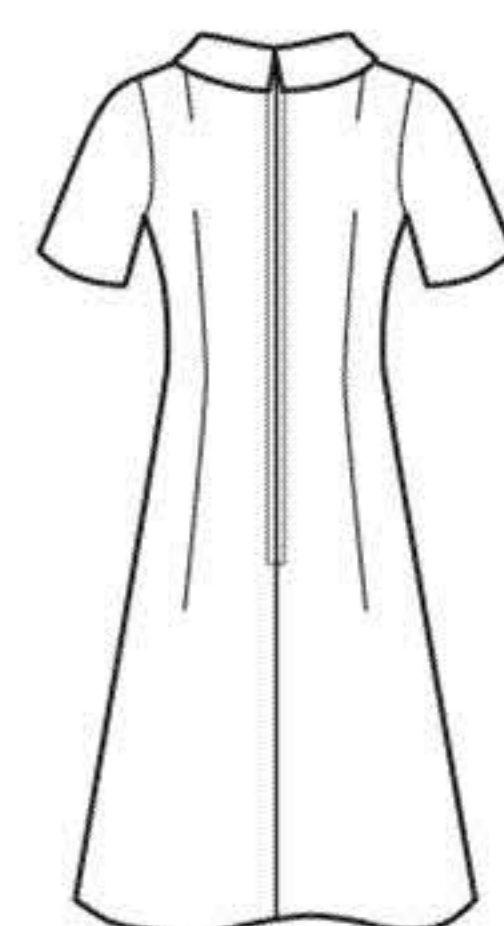
Entoilage- 0.90m de 51cm à 64cm, léger, thermocollant tel que Pellon®

*without nap **with nap ***with or without nap

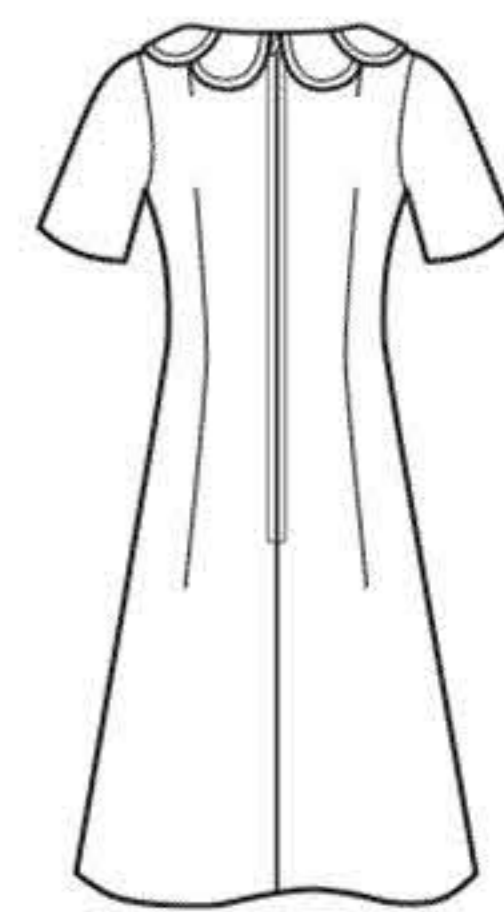
*sans sens **avec sens ***avec ou sans sens



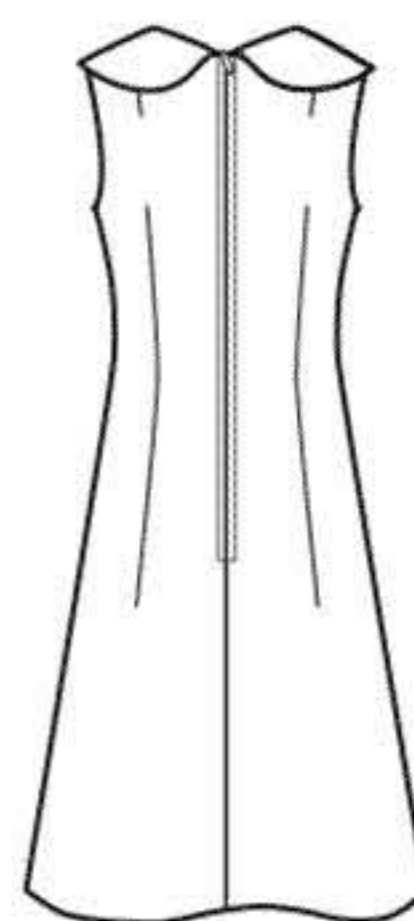
A



B



C



D