

S9117

17 PIECES/PIEZAS

BABIES' DRESSES, PANTIES AND HEADBAND

Fabrics: Cotton, Cotton Blends, Eyelet, Gingham, Taffeta. **Lining** in Cotton and Cotton Blends. Not suitable for sleepwear. Extra fabric needed to match plaids, stripes or one-way design fabrics.

Notions: Thread. **A,B,C,D: Dress-** One 9" zipper, **Panties-** $\frac{5}{8}$ yd. of $\frac{1}{2}$ " wide elastic for waist, $\frac{3}{4}$ yd. of $\frac{1}{4}$ " elastic for leg, one pkg. of $\frac{1}{2}$ " wide single fold bias tape. **A Dress:** $\frac{3}{4}$ yd. of $\frac{1}{4}$ " to $\frac{3}{8}$ " wide flat lace, seven small flowers. **B Dress:** $\frac{1}{2}$ yd. of $\frac{3}{4}$ " to 1" wide ribbon, one flower. **C Dress:** 2 $\frac{1}{2}$ yds. of medium rick-rack. **D Dress:** $\frac{1}{2}$ yd. of $\frac{1}{4}$ " wide elastic. **E Headband:** $\frac{5}{8}$ yd. of $\frac{1}{2}$ " wide elastic.

Sizes	XXS	XS	S	M	L	
	—	1-3	6	12	18	

A,B,C Lining	XXS	XS	S	M	L	
45"***	$\frac{7}{8}$	$\frac{7}{8}$	1	1 $\frac{1}{4}$	1 $\frac{3}{8}$	Yd

A Dress and Panties	XXS	XS	S	M	L	
45"***	1 $\frac{3}{8}$	1 $\frac{1}{2}$	1 $\frac{5}{8}$	1 $\frac{3}{4}$	1 $\frac{7}{8}$	Yd
60"***	1 $\frac{1}{8}$	1 $\frac{1}{8}$	1 $\frac{1}{4}$	1 $\frac{1}{4}$	1 $\frac{3}{8}$	"

Interfacing- $\frac{3}{8}$ yd. of 20" to 25" lightweight fusible, such as Pellon®

B Dress and Panties	XXS	XS	S	M	L	
45"***	1 $\frac{3}{8}$	1 $\frac{1}{2}$	1 $\frac{5}{8}$	1 $\frac{3}{4}$	1 $\frac{7}{8}$	Yd
60"***	$\frac{7}{8}$	1	1	1 $\frac{1}{4}$	1 $\frac{3}{8}$	"

C Dress and Panties	XXS	XS	S	M	L	
45"***	1 $\frac{3}{8}$	1 $\frac{1}{2}$	1 $\frac{5}{8}$	1 $\frac{3}{4}$	1 $\frac{7}{8}$	Yd
60"***	1 $\frac{1}{8}$	1 $\frac{1}{8}$	1 $\frac{1}{4}$	1 $\frac{3}{8}$	1 $\frac{3}{8}$	"

D Dress and Panties	XXS	XS	S	M	L	
45"***	1 $\frac{3}{8}$	1 $\frac{3}{8}$	1 $\frac{3}{8}$	1 $\frac{3}{8}$	1 $\frac{1}{2}$	Yd
60"***	$\frac{7}{8}$	1	1	1 $\frac{1}{8}$	1 $\frac{1}{4}$	"

Contrast Hem Band and Bow	XXS	XS	S	M	L	
45"***	$\frac{3}{4}$	$\frac{3}{4}$	$\frac{3}{4}$	$\frac{3}{4}$	$\frac{3}{4}$	Yd
60"***	$\frac{5}{8}$	$\frac{5}{8}$	$\frac{5}{8}$	$\frac{5}{8}$	$\frac{5}{8}$	"

Lining- 45"	XXS	XS	S	M	L	
	$\frac{5}{8}$	$\frac{3}{4}$	$\frac{3}{4}$	1	1	"

E Headband and Bow- $\frac{3}{8}$ yd. of 45" or 60"***

FINISHED GARMENT MEASUREMENTS

Finished back length from base of neck:

A,B,C,D Dress	XXS	XS	S	M	L	
	14 $\frac{1}{2}$	16	17 $\frac{1}{2}$	19	20 $\frac{1}{2}$	In
A,B,C,D Dress Width	59	60	61	62	63	"

BÉBÉS: ROBES, CULOTTE ET SERRE-TÊTE

Tailles	TTP	TP	P	M	G	
	—	1-3	6	12	18	

A,B,C Doublure	TTP	TP	P	M	G	
115cm*	0.80	0.80	0.90	1.20	1.30	m

A Robe et Culotte	TTP	TP	P	M	G	
115cm**	1.30	1.40	1.50	1.60	1.70	m
150cm**	1.00	1.00	1.10	1.20	1.30	"

Entoilage- 0.30m de 51cm à 64cm, léger, thermocollant tel que Pellon®

B Robe et Culotte	TTP	TP	P	M	G	
115cm**	1.30	1.40	1.50	1.60	1.70	m
150cm**	0.80	0.90	1.00	1.10	1.20	"

C Robe et Culotte	TTP	TP	P	M	G	
115cm**	1.30	1.40	1.50	1.60	1.70	m
150cm**	1.00	1.00	1.10	1.20	1.30	"

D Robe et Culotte	TTP	TP	P	M	G	
115cm**	1.20	1.20	1.20	1.30	1.40	m
150cm**	0.80	0.90	1.00	1.00	1.10	"

Bande d'Ourlet et Noeud Contrastante	TTP	TP	P	M	G	
115cm**	0.60	0.60	0.60	0.60	0.60	m
150cm**	0.50	0.50	0.50	0.50	0.50	"

Doublure- 115cm*	TTP	TP	P	M	G	
	0.60	0.70	0.70	0.90	0.90	"

E Serre-Tête et Noeud- 0.30m de 115cm ou 150cm**

*without nap **with nap ***with or without nap *sans sens **avec sens ***avec ou sans sens
 *sin pelusa **con pelusa ***con o sin pelusa



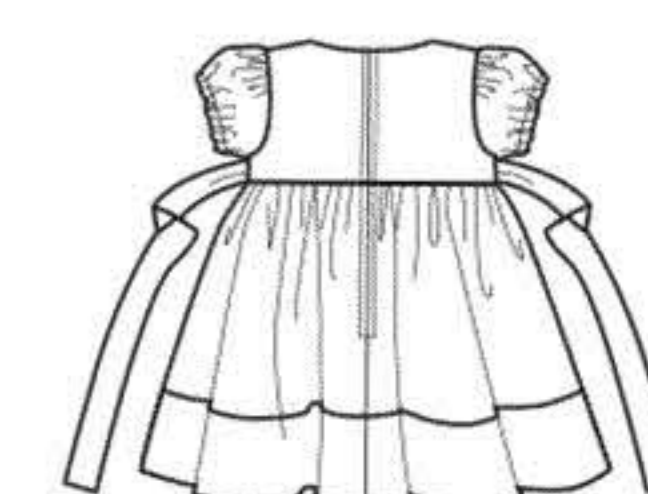
A



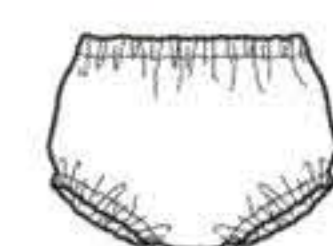
B



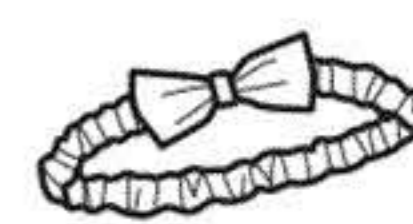
C



D



A,B,C,D



E

Medidas e Instrucciones de costura en Español en el Interior del Patrón.