

S9120 9 PIECES/PIEZAS

CHILDREN'S AND GIRLS' DRESSES

Fabrics: Broadcloth, Cotton/Cotton Blends, Cotton Lawn, Crepe, Sateen. Not suitable for sleepwear. Extra fabric needed to match plaids, stripes or one-way design fabrics.

Notions: Thread, one ½" (1.3cm) button.

Sizes	3	4	5	6	7	8	10	12	14	
A Dress										
45***	7/8	7/8	7/8	7/8	1	1 1/8	1 1/8	1 3/8	1 5/8	Yd
60***	3/4	3/4	3/4	3/4	1	1	1	1	1	"

A,B Interfacing- ½ yd. of 20" to 25" lightweight fusible, such as Pellon®

B Dress and Belt										
45***	1 1/2	1 1/2	1 3/4	2	2 1/2	2 5/8	2 3/4	3 1/4	3 3/8	Yd
60***	1 1/4	1 1/4	1 3/8	1 3/8	1 5/8	1 5/8	1 7/8	2	2 1/4	"

C Dress and Belt										
45***	1 3/8	1 3/8	1 3/8	1 3/8	1 5/8	1 3/4	2	2 1/4	2 1/4	Yd
60***	1	1	1	1 1/8	1 3/8	1 3/8	1 3/8	1 1/2	1 1/2	"

C,D Interfacing- 3/8 yd. of 20" to 25" lightweight fusible, such as Pellon®

D Dress										
45***	1	1	1	1	1 1/4	1 1/4	1 1/4	1 1/2	1 5/8	Yd
60***	3/4	3/4	3/4	7/8	1	1	1 1/8	1 1/8	1 1/4	"

Contrast Hem Band										
45***	3/8	3/8	3/8	3/8	7/8	7/8	7/8	7/8	7/8	Yd
60***	3/8	3/8	3/8	3/8	1/2	1/2	1/2	1/2	1/2	"

FINISHED GARMENT MEASUREMENTS

A,B,C,D Chest	24 1/2	25 1/2	26 1/2	27 1/2	29	30	31 1/2	33	35	In
Finished back length from base of neck:										
A	19	19 1/2	20	20 1/2	26 1/2	27	27 3/4	28 1/2	29 1/4	In
B	32 1/2	33 1/2	35 1/2	37 1/2	43 3/4	44 3/4	46 3/4	48 3/4	50 3/4	"
C	21 1/2	22 1/2	23 1/2	24 1/2	29 1/4	30 1/4	31 3/4	33 1/4	34 3/4	"
D	22 1/2	23	23 1/2	24	30 1/4	31 1/4	32	32 3/4	33 1/2	"

ENFANTS ET FILLETTES: ROBES/ NIÑAS PEQUEÑAS Y NIÑAS: VESTIDOS

Tailles	3	4	5	6	7	8	10	12	14	
A Robe/ A Vestido										
115cm**	0.80	0.80	0.80	0.80	1.00	1.00	1.10	1.20	1.50	m
150cm**	0.70	0.70	0.70	0.70	0.90	0.90	0.90	0.90	0.90	"

A,B Entoilage- 0.40m de 51cm à 64cm, léger, thermocollant tel que Pellon®

A,B Entretela- 0.40m de 51cm a 64cm, ligera, adhesiva como Pellon®

B Robe et Ceinture/ B Vestido y Cinturón										
115cm**	1.40	1.40	1.50	1.80	2.30	2.40	2.50	3.00	3.10	m
150cm**	1.20	1.20	1.20	1.30	1.40	1.50	1.70	1.80	2.00	"

C Robe et Ceinture/ C Vestido y Cinturón										
115cm**	1.20	1.20	1.30	1.30	1.40	1.50	1.80	2.00	2.10	m
150cm**	0.90	0.90	0.90	1.00	1.20	1.20	1.30	1.30	1.40	"

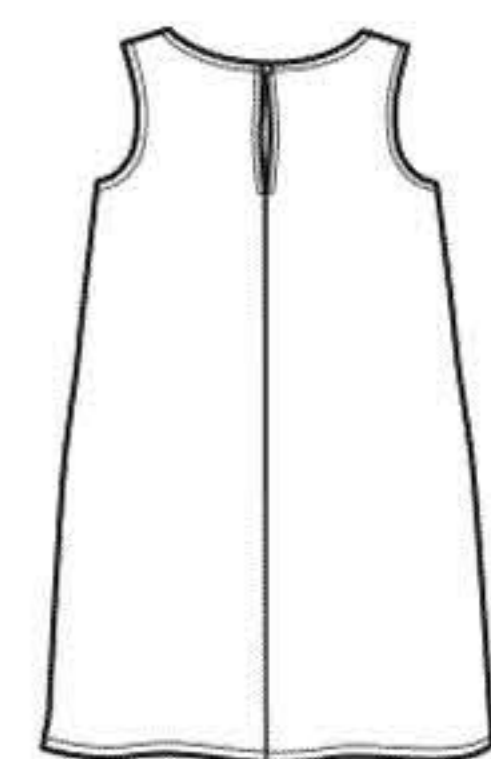
C,D Entoilage- 0.30m de 51cm à 64cm, léger, thermocollant tel que Pellon®

C,D Entretela- 0.30m de 51cm a 64cm, ligera, adhesiva como Pellon®

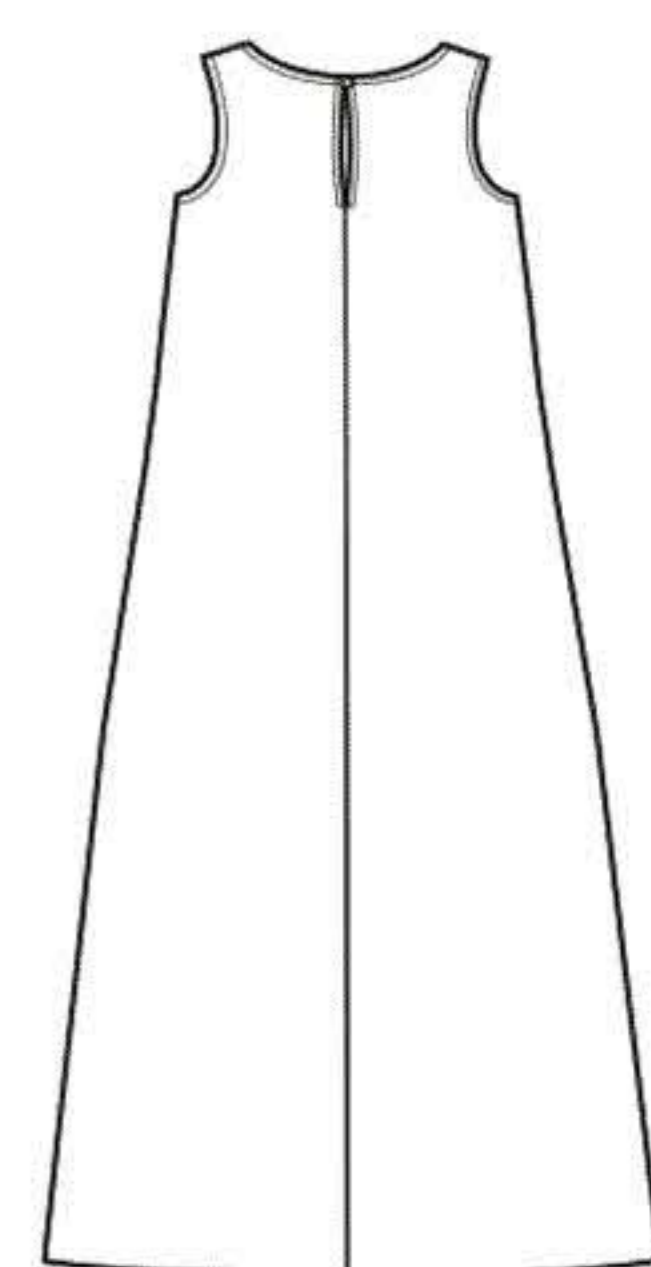
D Robe/ D Vestido										
115cm**	0.90	0.90	0.90	0.90	1.10	1.10	1.20	1.40	1.50	m
150cm**	0.70	0.70	0.70	0.80	0.90	1.00	1.00	1.10	1.10	"

Bande d'Ourlet Contrastante/ Banda de Doblado Contrastante										
115cm**	0.40	0.40	0.40	0.40	0.80	0.80	0.80	0.80	0.80	m
150cm**	0.40	0.40	0.40	0.40	0.50	0.50	0.50	0.50	0.50	"

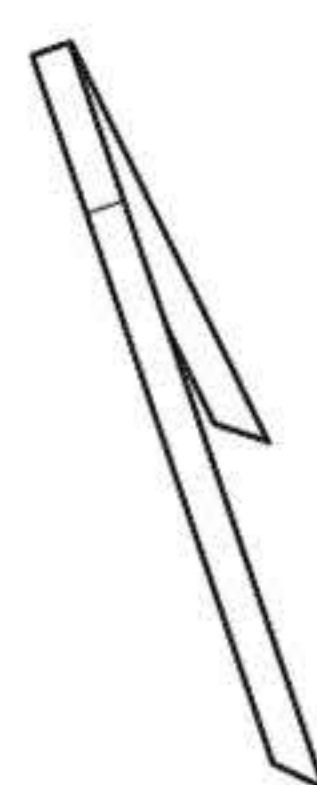
*without nap **with nap ***with or without nap *sans sens **avec sens ***avec ou sans sens
 *sin pelusa **con pelusa ***con o sin pelusa



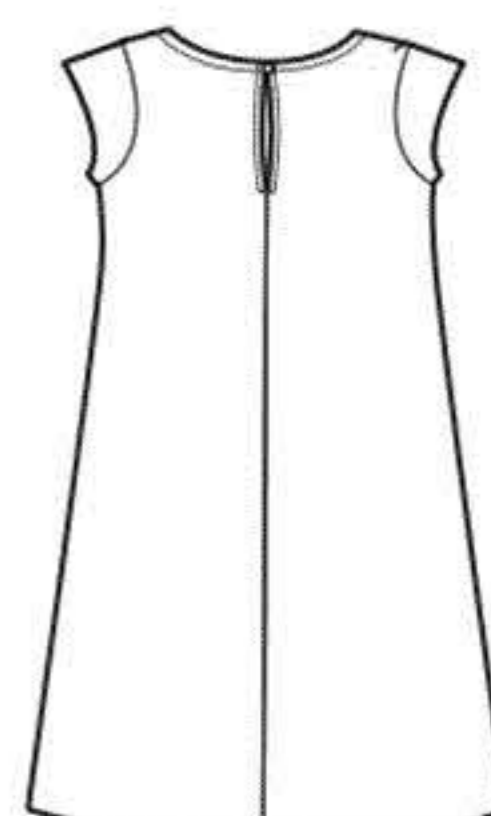
A



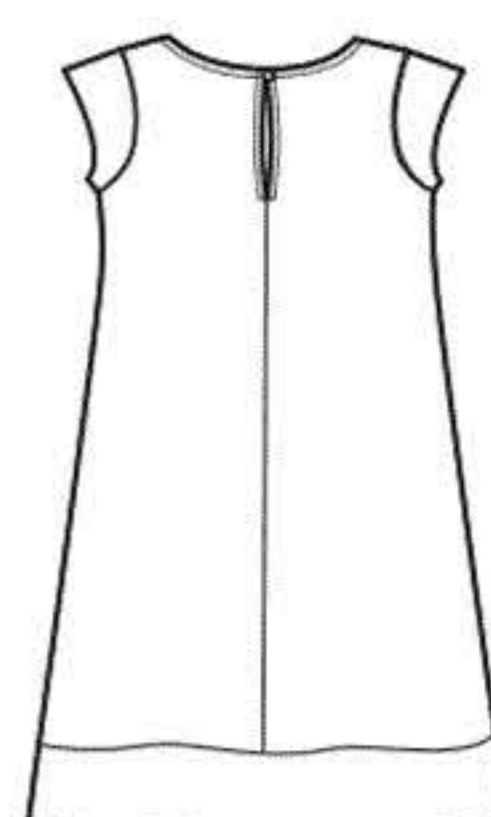
B



B,C



C



D

Instrucciones de costura en Español en el Interior del Patrón.