

# S9124 13 PIECES/PIEZAS

## MISSES' KIMONO JACKETS

**Fabrics:** Silky lightweight woven fabrics with drape such as: Batiks, Charmeuse, Cotton Types, Crepe de Chine, Double Georgette, Linen Types, Silky Types. **C** also in Border Printed Fabrics. Extra fabric needed to match plaids, stripes or one-way design fabrics.

**Notions:** Thread.

Sizes	XXS	XS	S	M	L	XL	XXL
	4	6-8	10-12	14-16	18-20	22-24	26
Sizes-European	30	32-34	36-38	40-42	44-46	48-50	52

### A Kimono Jacket

45***	2	2	2	2 1/8	2 1/8	2 1/8	2 1/8	Yd
60***	1 1/8	1 1/8	1 1/8	1 1/4	1 3/4	1 3/4	1 3/4	"

**Lace-** 3 yd. of 2" wide

### B Kimono Jacket

45***	2	2 1/2	2 1/2	2 1/2	2 5/8	2 5/8	2 5/8	Yd
60***	1 3/8	1 3/8	1 3/8	1 3/8	1 1/2	2 1/8	2 1/8	"

**Contrast Bands-** 7/8 yd. of 45" or 60"\*\*\*

**B,C Interfacing-** 7/8 yd. of 20" to 25" lightweight fusible, such as Pellon®

### C Kimono Jacket- cut crosswise

45***	3 1/8	3 1/4	3 3/8	3 1/2	3 5/8	3 3/4	3 7/8	Yd
-------	-------	-------	-------	-------	-------	-------	-------	----

### D Kimono Jacket

45***	1 1/2	1 1/2	1 5/8	2	2	2 1/8	2 1/8	Yd
60***	1 1/4	1 1/2	1 1/2	1 5/8	1 5/8	1 5/8	1 5/8	"

**Contrast Bands-** 1 3/8 yd. of 45" or 60"\*\*\*

**Interfacing-** 1 1/8 yd. of 20" to 25" lightweight fusible, such as Pellon®

## FINISHED GARMENT MEASUREMENTS

**Finished back length from base of neck:**

<b>A</b>	19	19 1/2	20	20 1/2	21	21 1/2	22	In
<b>B,C</b>	31	31 1/2	32	32 1/2	33	33 1/2	34	"
<b>D</b>	26 1/2	27	27 1/2	28	28 1/2	29	29 1/2	"

## JEUNE FEMME: VESTES DE KIMONO/ SEÑORITAS: CHAQUETAS DE KIMONO

Tailles/Tallas	TTP/XXP	TP/XP	P	M	G	TG/XG	TTG/XXG
	4	6-8	10-12	14-16	18-20	22-24	26
Tailles-Françaises	32	34-36	38-40	42-44	46-48	50-52	54
Tallas-Europeas	30	32-34	36-38	40-42	44-46	48-50	52

### A Veste de Kimono/ A Chaqueta de Kimono

115cm**	1.80	1.80	1.80	1.90	1.90	1.90	2.00	m
150cm**	1.00	1.00	1.00	1.10	1.60	1.60	1.60	"

**Dentelle-** 2.70m de 5cm de large/ **Encaje-** 2.70m de 5cm de ancho

### B Veste de Kimono/ B Chaqueta de Kimono

115cm**	1.80	2.30	2.30	2.30	2.40	2.40	2.40	m
150cm**	1.30	1.30	1.30	1.30	1.30	1.90	1.90	"

**Bandes Contrastantes-** 0.80m de 115cm ou 150cm\*\*/ **Bandas Contrastantes-** 0.80m de 115cm o 150cm\*\*

**B,C Entoilage-** 0.80m de 51cm à 64cm léger thermocollant tels que Pellon®

**B,C Entretela-** 0.80m de 51cm a 64cm ligera adhesiva como Pellon®

### C Veste de Kimono- coupée sur la largeur/ C Chaqueta de Kimono- cortada por el ancho

115cm**	2.80	2.90	3.00	3.20	3.30	3.40	3.60	m
---------	------	------	------	------	------	------	------	---

### D Veste de Kimono/ D Chaqueta de Kimono

115cm**	1.40	1.40	1.40	1.80	1.90	1.90	2.00	m
150cm**	1.10	1.40	1.40	1.40	1.50	1.50	1.50	"

**Bandes Contrastantes-** 1.20m de 115cm ou 150cm\*\*/ **Bandas Contrastantes-** 1.20m de 115cm o 150cm\*\*

**Entoilage-** 1.70m de 51cm à 64cm léger thermocollant tels que Pellon®

**Entretela-** 1.70m de 51cm a 64cm ligera adhesiva como Pellon®

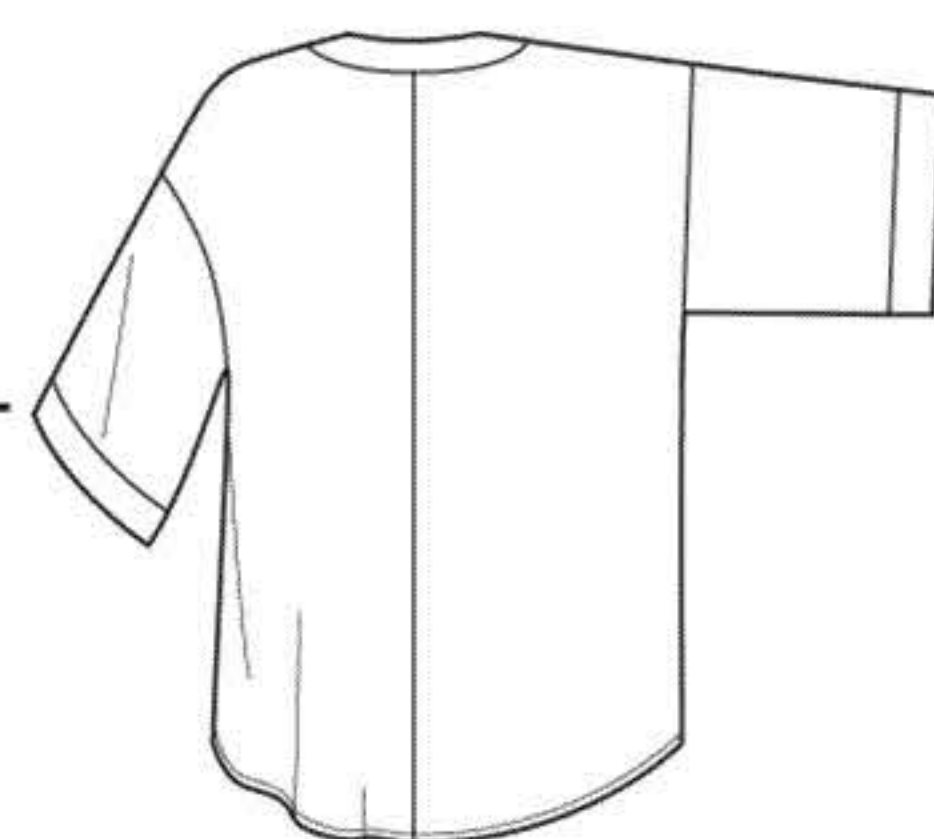
\*without nap \*\*with nap \*\*\*with or without nap

\*sans sens \*\*avec sens \*\*\*avec ou sans sens

\*sin pelusa \*\*con pelusa \*\*\*sin o con pelusa



A



B,C



D

**Instrucciones de costura en Español en el Interior del Patrón.**