

# S9125 14 PIECES/PIEZAS

## MISSES' MAXI DRESS AND LONG OR SHORT JUMPSUIT WITH BODICE VARIATIONS

**Fabrics:** Batiks, Challis, Chambray, Cotton Types, Crepe Back Satin, Crepe de Chine, Soft Lightweight Linen Types, Lightweight Poplin, Lightweight Sateen, Silky Types, Interlock, Jersey, Spandex Blends. Extra fabric needed to match plaids, stripes or one-way design fabrics.

**Notions:** Thread. **C,D:** One pkg. of 1/2" (1.3cm) wide single fold bias tape.

Sizes	XXS	XS	S	M	L	XL	XXL
	4	6-8	10-12	14-16	18-20	22-24	26
<b>Sizes-European</b>	30	32-34	36-38	40-42	44-46	48-50	52

### A Jumpsuit

45***	2 3/4	2 7/8	3	3 5/8	3 3/4	3 7/8	4	Yd
60***	2 1/8	2 3/4	2 7/8	3 1/8	3 1/4	3 1/4	3 3/8	"

**A,B Interfacing-** 1 1/4 yd. of 20" to 25" lightweight fusible, such as Pellon®

**Elastic-** 1 3/8 yd. of 3/8" wide

### B Maxi Dress

45***	3 3/8	3 3/8	3 3/8	3 3/8	3 1/2	3 5/8	3 5/8	Yd
60***	2	2	2 1/8	2 1/4	2 7/8	3 1/4	3 1/4	"

### C Maxi Dress

45***	2 3/8	3 3/8	3 3/8	3 3/8	3 3/8	3 5/8	3 5/8	Yd
60***	2	2	2	2	3	3 1/8	3 1/8	"

**C,D Elastic-** 1 3/8 yd. of 3/8" wide

### D Jumpsuit

45***	1 5/8	1 3/4	1 7/8	2	2 1/8	2 3/8	2 3/8	Yd
60***	1 3/8	1 1/2	1 1/2	1 1/2	1 5/8	1 7/8	1 7/8	"

### FINISHED GARMENT MEASUREMENTS

<b>A,B Bust</b>	32	34 1/2	37	41	45	49	53	In
<b>C,D Bust</b>	34 1/2	37	39 1/2	43 1/2	47 1/2	51 1/2	55 1/2	"
<b>A,D Hip</b>	37 1/2	40	42 1/2	46 1/2	50 1/2	54 1/2	58 1/2	"
<b>B,C Hip</b>	36	38 1/2	41	45	49	53	57	"
<b>Finished back length from base of neck:</b>								
<b>A</b>	54 1/2	55 1/2	56 1/2	57 1/2	58 1/2	59 1/2	60 1/2	In
<b>B,C</b>	55	55 1/2	56	56 1/2	57	57 1/2	58	"
<b>D</b>	29 1/2	30 1/2	31 1/2	32 1/2	33 1/2	34 1/2	35 1/2	"

## JEUNE FEMME: ROBE MAXI ET COMBINAISON LONGUE OU COURTE AVEC CHOIX DE CORSAGES

Tailles	TTP	TP	P	M	G	TG	TTG
	4	6-8	10-12	14-16	18-20	22-24	26
<b>Tailles-Françaises</b>	32	34-36	38-40	42-44	46-48	50-52	54

### A Combinaison

115cm**	2.50	2.60	2.80	3.30	3.40	3.50	3.60	m
150cm**	2.00	2.60	2.60	2.90	2.90	3.00	3.10	"

**A,B Entoilage-** 1.10m de 51cm à 64cm léger thermocollant tels que Pellon®

**Élastique-** 1.30m de 1cm de large

### B Maxi Robe

115cm**	3.10	3.10	3.10	3.10	3.20	3.30	3.30	m
150cm**	1.80	1.90	1.90	2.00	2.70	3.00	3.00	"

### C Maxi Robe

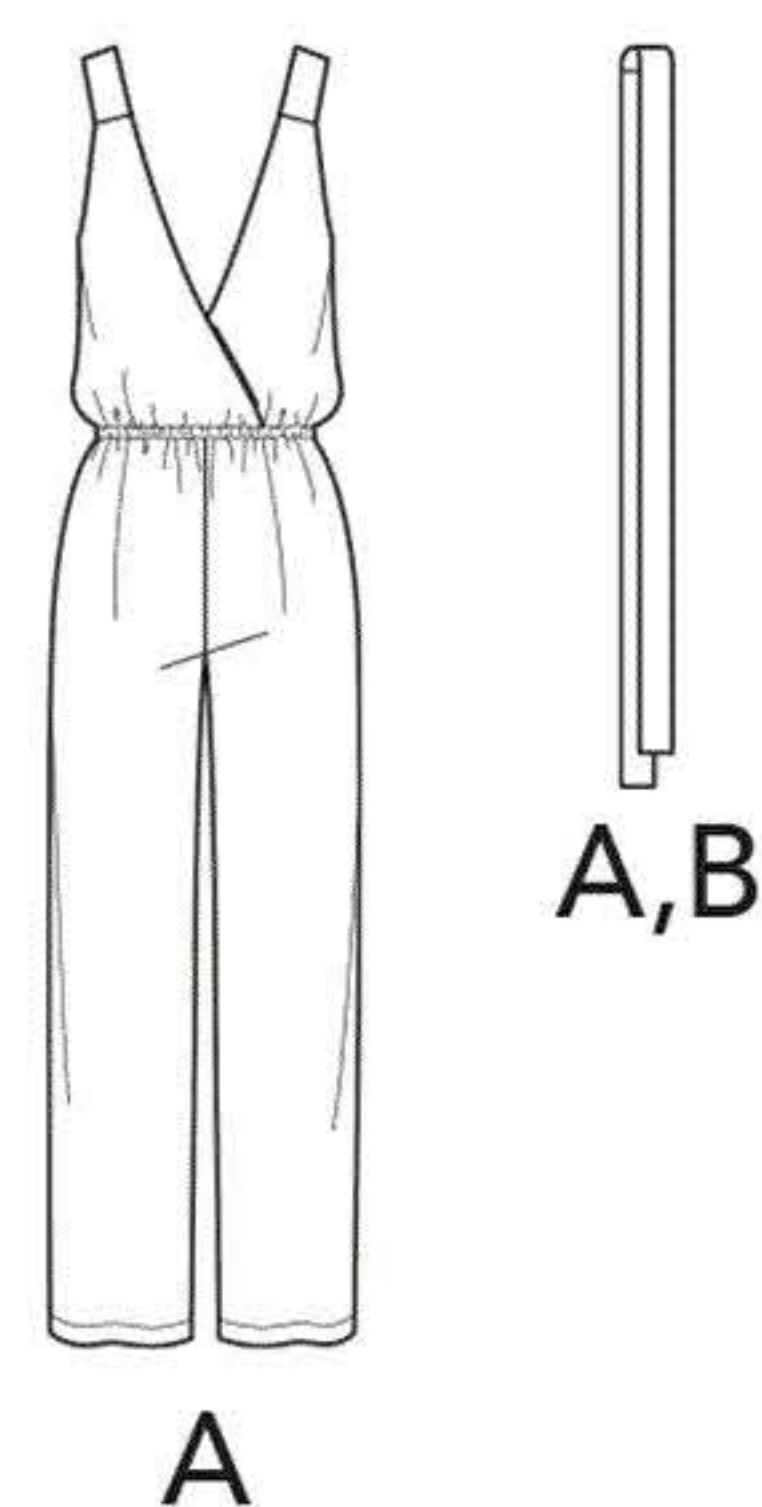
115cm**	2.20	3.00	3.00	3.00	3.10	3.30	3.30	m
150cm**	1.80	1.80	1.80	1.80	2.80	2.90	2.90	"

**C,D Élastique-** 1.30m de 1cm de large

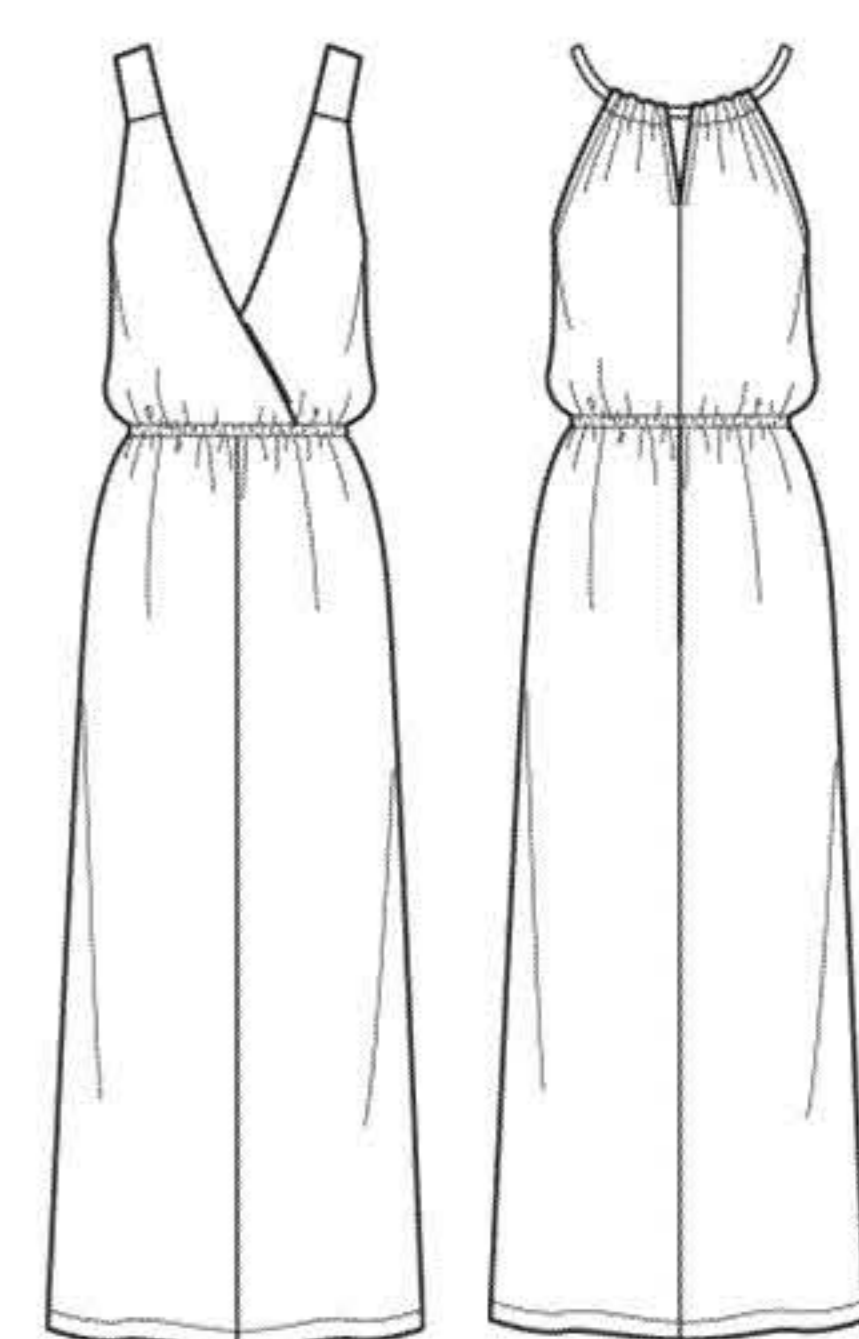
### D Combinaison

115cm**	1.50	1.60	1.70	1.80	1.90	2.10	2.20	m
150cm**	1.30	1.30	1.30	1.40	1.50	1.70	1.70	"

\*without nap \*\*with nap \*\*\*with or without nap \*sans sens \*\*avec sens \*\*\*avec ou sans sens

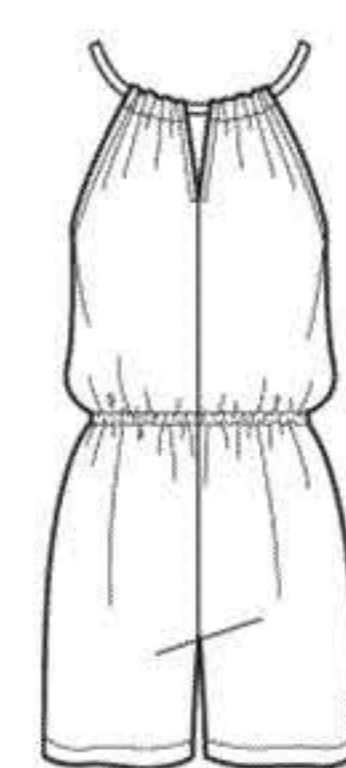


A



B

C



D