

S9128 9 PIECES/PIEZAS

BOYS' AND MEN'S LOUNGEWEAR: PANTS OR SHORTS, BAG AND KNIT TOP

Fabrics: A,B sized for stretch knits only: Cotton Interlock, Jerseys, Lightweight Double Knits, Two Way Stretch. See Pick-A-Knit® Rule. Suitable for Overlock/Serger. C,D,E in Cotton and Cotton Blends, Laundered Cottons, Flannel, Chambray, Gingham, Lightweight Denim, Linen and Linen Blends, Nylon Sport Fabrics. Extra fabric needed to match plaids, stripes or one-way design fabrics.

Notions: Thread.

Sizes	BOYS'			MEN'S				Yd
	S	M	L	S	M	L	XL	
A- sized for stretch knits only								
60"***	5/8	5/8	3/4	1	1	1	1	Yd
Contrast Sleeves and Neckband								
60"***	5/8	3/4	7/8	1	1	1 1/8	1 1/8	Yd
B- sized for stretch knits only								
60"***	7/8	1	1	1 1/2	1 1/2	1 1/2	1 1/2	Yd
C								
45"***	1	1 3/4	2 1/8	2 5/8	2 5/8	2 5/8	2 5/8	Yd
60"***	7/8	1 1/8	1 1/4	1 7/8	2 1/4	2 1/2	2 5/8	"
D								
45"***	3/4	3/4	1 1/8	1 1/4	1 1/4	1 1/4	1 1/4	Yd
60"***	1/2	5/8	5/8	7/8	1 1/4	1 1/4	1 1/4	"

C,D Elastic- 1/2" wide: 3/4 yd. for Boy's sizes, 1 1/4 yd. for Men's sizes

E Bag- 45" or 60"***: 7/8 yd. for Boy's sizes, 1 1/8 yd. for Men's sizes

Interfacing- 3/8 yd. of 22" to 25" lightweight fusible, such as Pellon®

FINISHED GARMENT MEASUREMENTS

A,B Chest	29	33	37	38 1/2	42 1/2	46 1/2	50 1/2	In
C,D Hip	29	33	37	41	45	49	53	"
C Side Length	24 1/2	30 1/2	36 1/2	42	42	43	43	"
C Leg Width	13 1/2	14 1/2	15 1/2	19	20	21	22	"
D Side Length	11 1/2	13	14 1/2	16	16	17	17	"
D Leg Width	17 1/2	20	22 1/2	25 1/2	28	30 1/2	33	"

GARÇONNET ET HOMME VETEMENTS D'INTERIEUR: PANTALON OU SHORT, SAC ET HAUT EN JERSEYS NIÑOS Y HOMBRES ROPA DE CASA: PANTALON O SHORT, BOLSO Y CAMISETA DE MALLAS

Tailles/ Tallas	GARÇONNET/ NIÑOS			HOMME/ HOMBRE				m
	P	M	G	P	M	G	TG/XG	
A- en jerseys extensibles seulement/ A- en mallas extensibles solamente								
150cm**	0.60	0.60	0.70	0.90	0.90	0.90	0.90	m
Manches et Bande d'Encolure Contrastantes/ Mangas y Banda del Escote Contrastantes								
150cm**	0.60	0.70	0.80	0.90	0.90	1.00	1.00	m
B- en jerseys extensibles seulement/ B- en mallas extensibles solamente								
150cm**	0.80	0.90	0.90	1.30	1.40	1.40	1.40	m
C								
115cm**	1.00	1.60	1.90	2.40	2.40	2.40	2.40	m
150cm**	0.80	1.00	1.10	1.70	2.10	2.30	2.40	"
D								
115cm**	0.60	0.70	1.00	1.10	1.10	1.10	1.10	m
150cm**	0.50	0.50	0.60	0.80	1.10	1.10	1.10	"

C,D Elastique- 1.3cm de large: 0.70m pour les tailles Garçonnet, 1.20m pour les tailles Hommes

C,D Elástico- 1.3cm de ancho: 0.70m para las tallas Niños, 1.20m para las tallas Hombres

E Sac- 115cm ou 150cm**: 0.80m pour les tailles Garçonnet, 1.00m pour les tailles Hommes

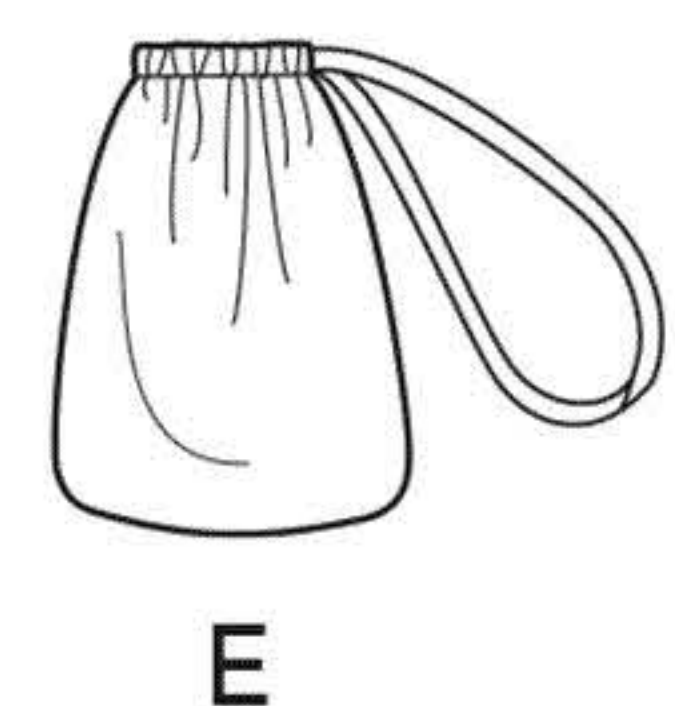
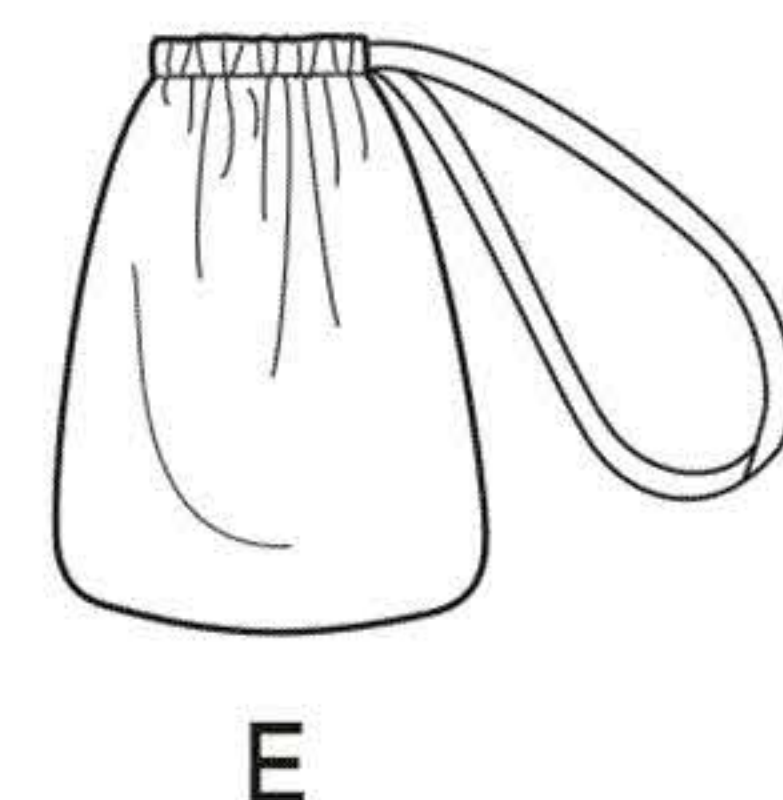
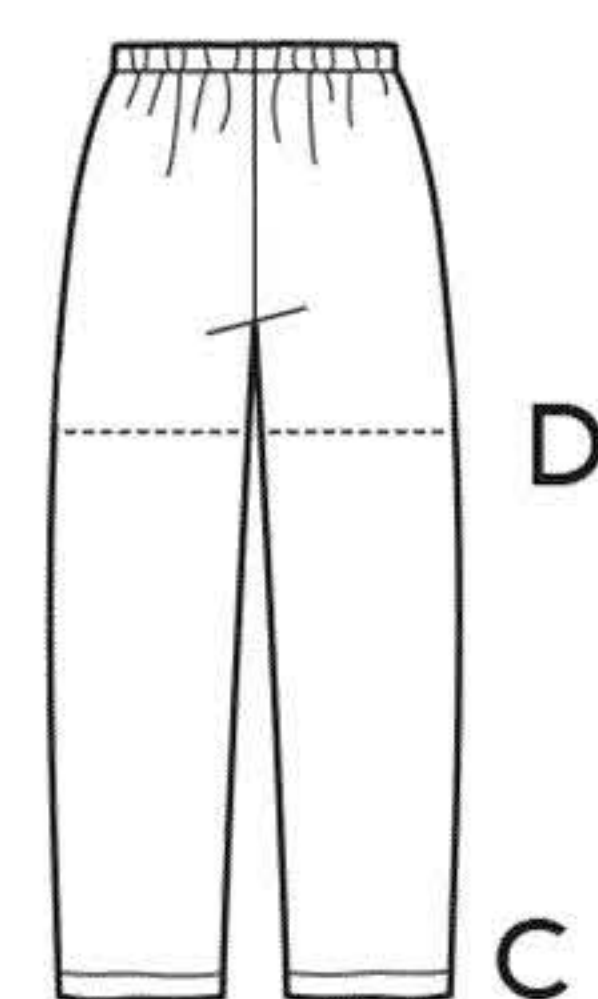
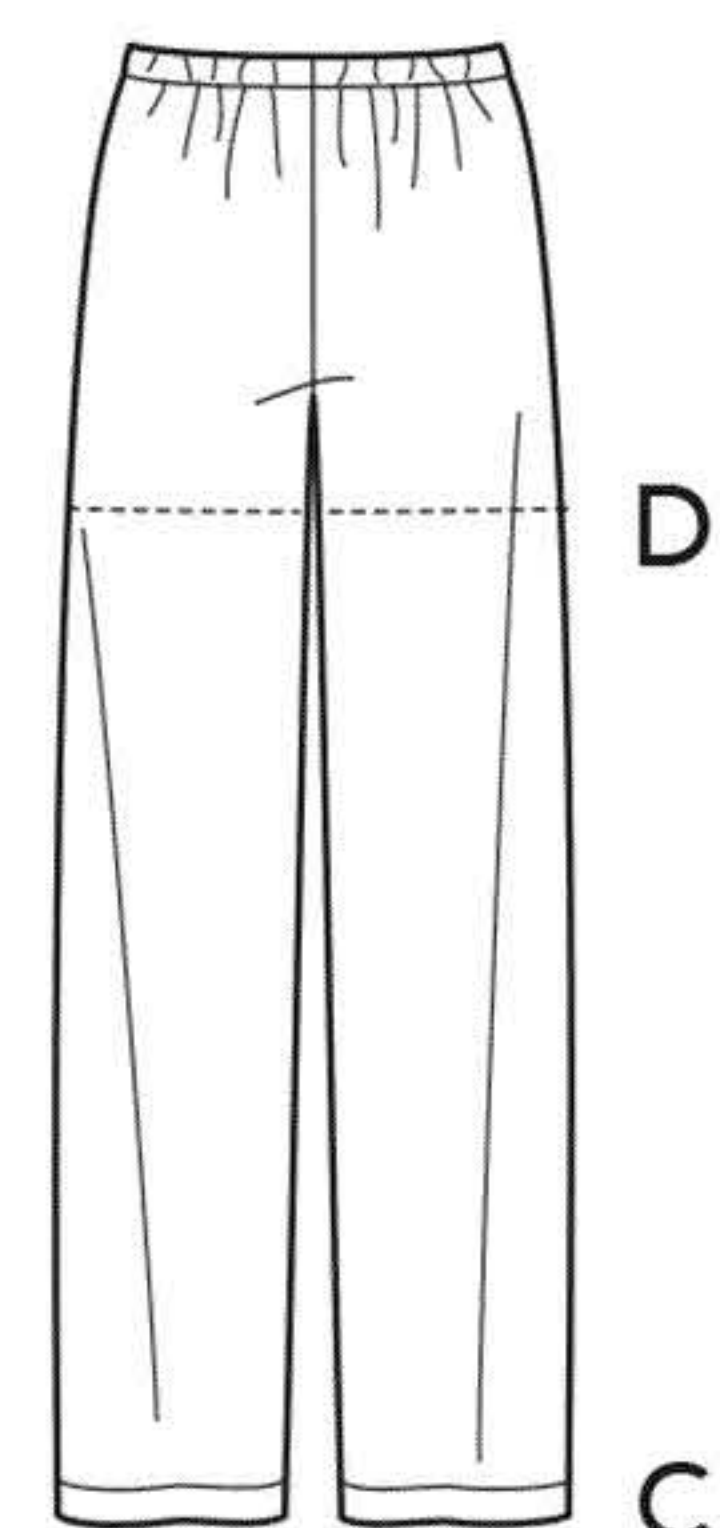
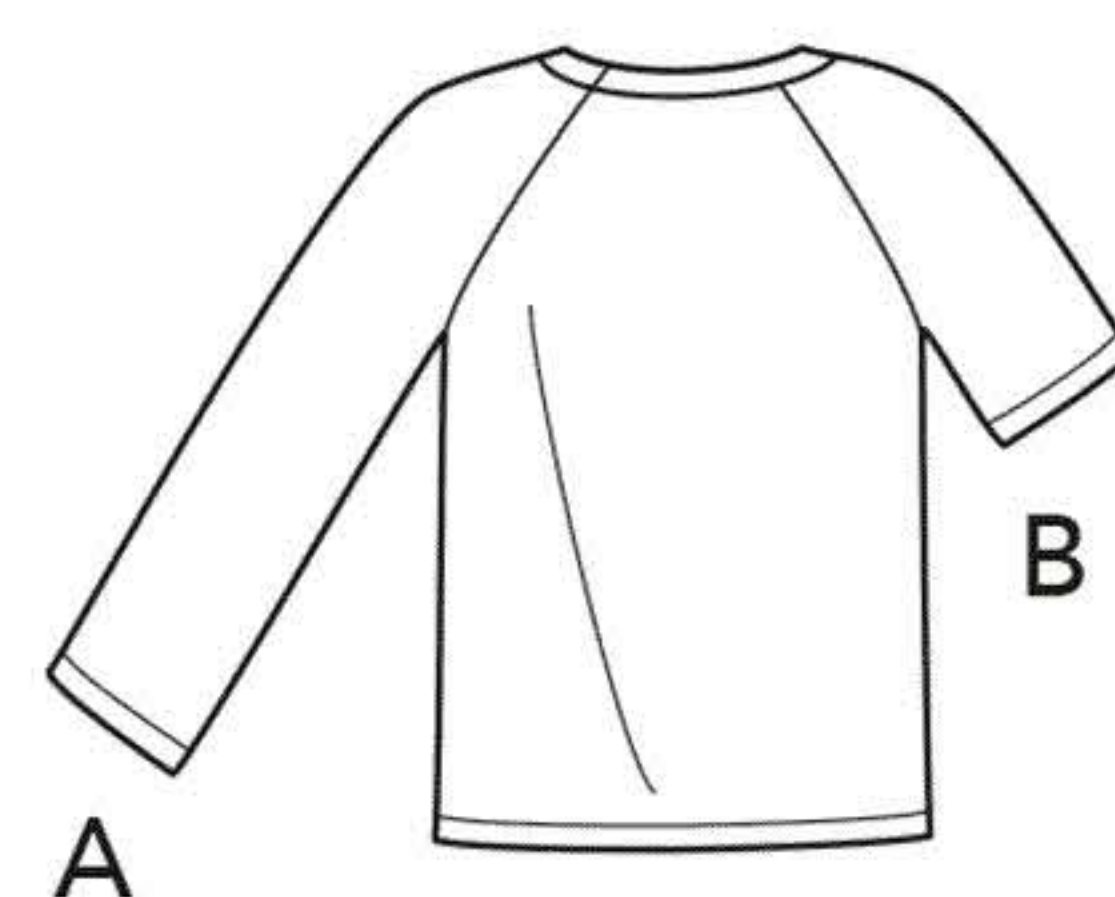
E Bolso- 115cm o 150cm**: 0.80m para las tallas Niños, 1.00m para las tallas Hombres

Entoilage- 0.40m de 55cm à 64cm, léger, thermocollant tel que Pellon®

Entretela- 0.40m de 55cm a 64cm, ligera, adhesiva como Pellon®

*without nap **with nap ***with or without nap *sans sens **avec sens ***avec ou sans sens

*sin pelusa **con pelusa ***sin o con pelusa



Instrucciones de costura en Español en el Interior del Patrón.