

S9132 1 PIECE/PIEZA

CHILD'S, TEENS' AND ADULTS' PANTS

Fabrics: Flannel, Gingham, Chambray, Cotton and Cotton Blends, Cotton Interlock, Jerseys, Fleece. Child's sizes not suitable for sleepwear. Extra fabric needed to match plaids, stripes or one-way design fabrics.

Notions: Thread.

Sizes	CHILDS / TEENS				TEENS / ADULTS				
	XS	S	M	L	XS	S	M	L	XL
	4-5	6-8	10-12	14-16	—	—	—	—	—

Pants

45"***	1	1½	2	2½	2⅝	2⅝	2⅝	2¾	2¾	Yd
60"***	1	1⅛	1¼	1⅜	2⅝	2⅝	2⅝	2¾	2¾	"

Elastic- 1" wide: 1¼ yd. for Child's/Teens' sizes, 1⅝ yd. for Teens'/Adults' sizes

Twill Tape for Ties- ¾ yd. of ¼" wide

FINISHED GARMENT MEASUREMENTS

Hip	30½	32	34	37½	37	40	44	48	52	In
Side Length	27	30	35	37½	39	40	41	42	43	"
Leg Width	15½	16	16½	17	18	19	20	21	22	"

ENFANT, ADOLESCENT ET ADULTES: PANTALON

NIÑOS, ADOLESCENTES Y ADULTOS: PANTALÓN

Tailles/ Tallas	ENFANT / ADOLESCENT				ADOLESCENT / ADULTES				
	NIÑOS / ADOLESCENTES				ADOLESCENTES / ADULTOS				
	TP/XP	P	M	G	TP/XP	P	M	G	TG/XG
	4-5	6-8	10-12	14-16	—	—	—	—	—

Pantalon/ Pantalón

115cm**	0.90	1.40	1.80	2.30	2.30	2.40	2.40	2.50	2.60	m
150cm**	0.90	1.00	1.10	1.20	2.30	2.40	2.40	2.50	2.60	"

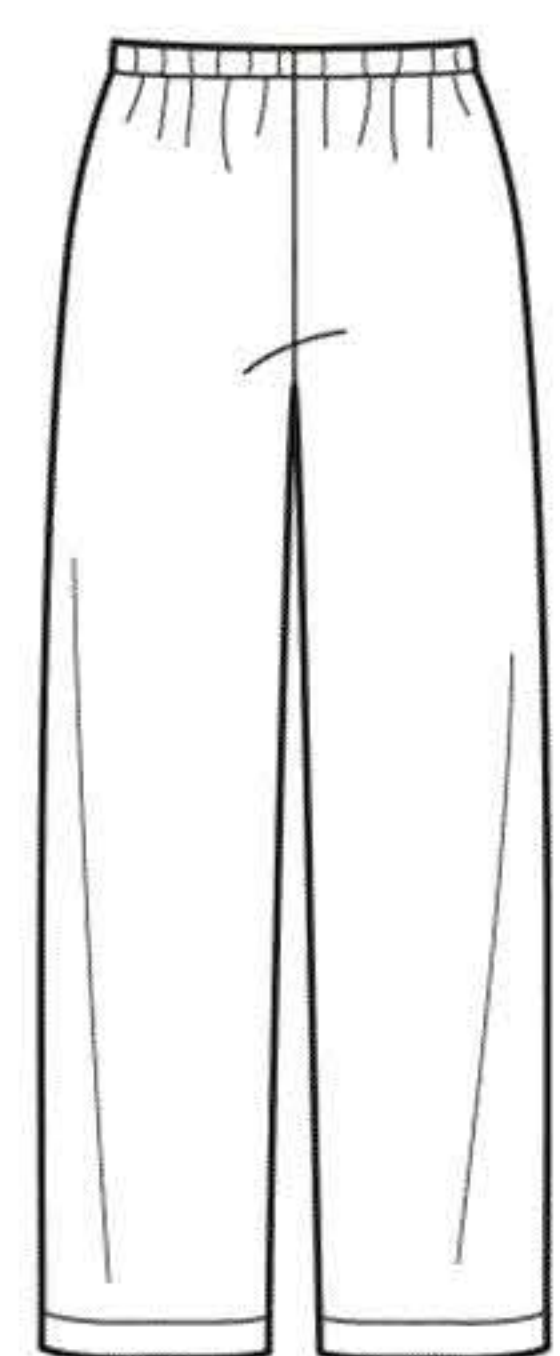
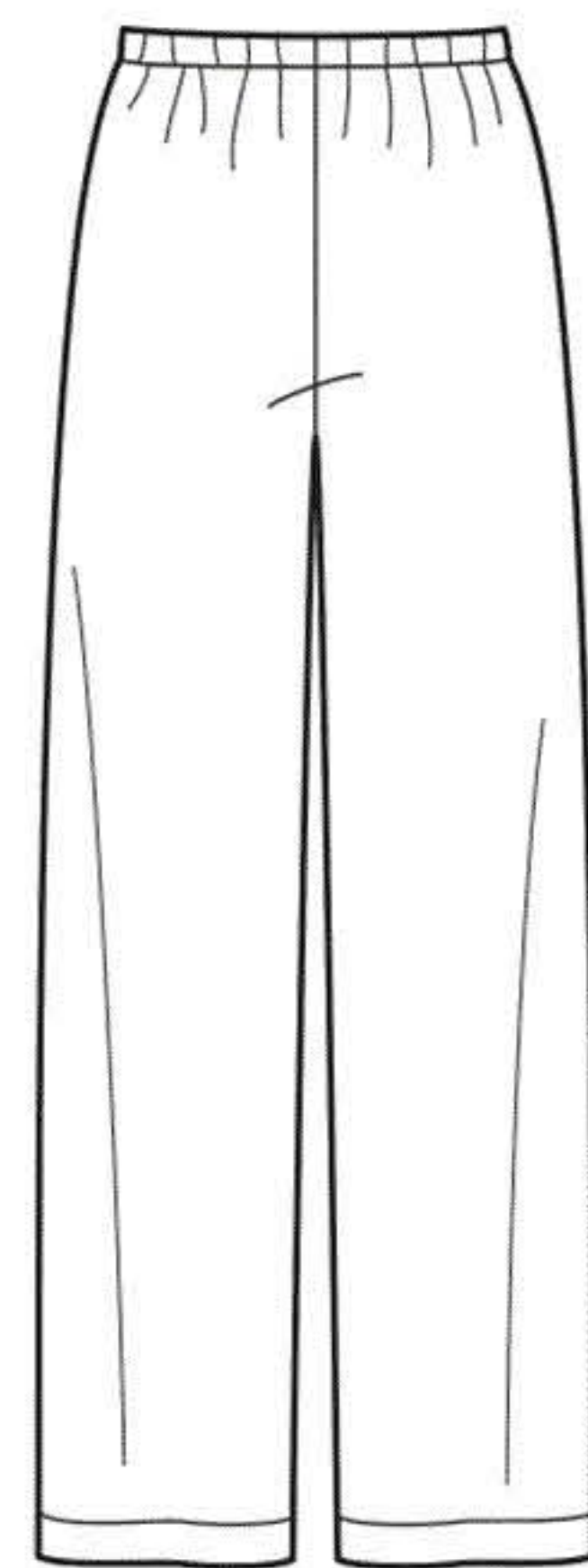
Élastique- 2.5cm de large: 1.10m pour les tailles Enfant/Adolescent, 1.50m pour les tailles Adolescent/Adultes

Elástico- 2.5cm de ancho: 1.10m para las tallas Niños/Adolescentes, 1.50m para las tallas Adolescentes/Adultos

Talonette de Coton pour les Liens- 0.70m de 6mm de large

Galón Asargado para los Lazos- 0.70m de 6mm de ancho

*without nap **with nap ***with or without nap *sans sens **avec sens ***avec ou sans sens
 *sin pelusa **con pelusa ***sin o con pelusa



Instrucciones de costura en Español en el Interior del Patrón.