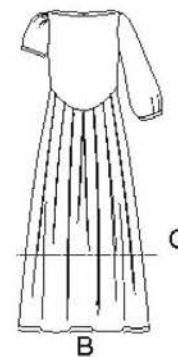
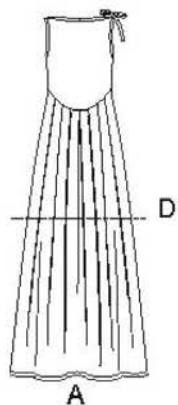


S8910

13 PIECES/PIEZAS



MISSSES' DRESS WITH LENGTH AND SLEEVE VARIATIONS

Fabrics: Challis, Chambray, Cotton Lawn, Linen Types, lightweight Poplin, Silky Types. Extra fabric needed to match plaids, stripes or one-way design fabrics.

Notions: Thread.

BODY MEASUREMENTS (For Sizing Help Visit www.simplicity.com/sizehelp)

Bust	30½	31½	32½	34	36	38	40	42	44	In
Waist	23	24	25	26½	28	30	32	34	37	"
Hip-9" below waist	32½	33½	34½	36	38	40	42	44	46	"
Back-neck to waist	15½	15¾	16	16¼	16½	16¾	17	17¼	17½	"
Sizes	6	8	10	12	14	16	18	20	22	
European	32	34	36	38	40	42	44	46	48	

A Dress										
45***	3¾	3¾	3¾	3¾	3¾	4	4	4	4	Yd
60***	3¼	3¼	3¼	3¼	3¾	3¾	3¾	3¾	3¾	"

B Dress										
45***	3¾	3½	3½	3½	3¾	3¾	3¾	3¾	3¾	Yd
60***	2¾	2¾	3	3	3¾	3¼	3¼	3¼	3¾	"

C Dress										
45***	3¾	3¾	3¾	3½	3½	3½	3½	3¾	3¾	Yd
60***	2¾	2¾	2¾	2¾	2¾	3	3	3	3¾	"

D Dress										
45***	2¾	2¾	2¾	2¾	3	3	3	3	3	Yd
60***	2¼	2¼	2¼	2¼	2¼	2¾	2¾	2½	2¾	"

FINISHED GARMENT MEASUREMENTS (Includes Design and Wearing EASE)

A, B, C, D Bust	34½	35½	36½	38	40	42	44	46	48	In
Finished back length from base of neck:										
A	55½	55¾	56	56¼	56½	56¾	57	57¼	57½	In
B	48½	48¾	49	49¼	49½	49¾	50	50¼	50½	"
C	37½	37¾	38	38¼	38½	38¾	39	39¼	39½	"
D	36½	36¾	37	37¼	37½	37¾	38	38¼	38½	"
A Width	76½	77½	78½	80	82	84	86	88	90	"
B Width	74½	75½	76½	78	80	82	84	86	88	"
C Width	71	72	73	74½	76½	78½	80½	82½	84½	"
D Width	69½	70½	71½	73	75	77	79	81	83	"

*without nap **with nap ***with or without nap

JEUNE FEMME: ROBE AVEC DIFFÉRENTES LONGUEURS ET MANCHES

Tissus: Étamine, Chambray, Linon de Coton, Toile de Lin, Popeline légère, Tissus Soyeux. Prévoyez davantage de tissu pour raccorder les écossais, rayures ou motifs unidirectionnels.

Mercerie: Fil.

SEÑORITAS: VESTIDO CON DIFERENTES LARGOS Y MANGAS

Telas: Chalí, Chambray, Linón de Algodón, Tela de Lino, Popelina ligera, Telas Sedosas. Se necesita tela adicional para casar cuadros, rayas o telas estampadas en una dirección.

Mercería: Hilo.

MESURES NORMALISÉES/MEDIDAS DEL CUERPO

Poitrine/Busto	78	80	83	87	92	97	102	107	112	cm
Taille/Cintura	58	61	64	67	71	76	81	87	94	"
Hanches (23cm au-dessous de la taille)/Caderas (23cm abajo de la cintura)										
	83	85	88	92	97	102	107	112	117	cm
Dos (encolure á taille)/Espalda (escote a cintura)										
	39.5	40	40.5	41.5	42	42.5	43	44	44	cm
Tailles/Tallas	6	8	10	12	14	16	18	20	22	
Françaises	34	36	38	40	42	44	46	48	50	
Europeas	32	34	36	38	40	42	44	46	48	

A Robe/A Vestido

115cm**	3.50	3.50	3.50	3.50	3.50	3.60	3.60	3.60	3.60	m
150cm**	3.00	3.00	3.00	3.00	3.00	3.10	3.10	3.40	3.40	"

B Robe/B Vestido

115cm**	3.10	3.20	3.20	3.20	3.30	3.30	3.40	3.40	3.60	m
150cm**	2.60	2.60	2.70	2.80	2.90	2.90	2.90	2.90	3.10	"

C Robe/C Vestido

115cm**	3.10	3.10	3.10	3.10	3.20	3.20	3.20	3.30	3.30	m
150cm**	2.40	2.40	2.40	2.40	2.70	2.70	2.70	2.80	2.80	"

D Robe/D Vestido

115cm**	2.60	2.60	2.60	2.60	2.70	2.70	2.80	2.80	2.80	m
150cm**	2.00	2.00	2.10	2.10	2.10	2.10	2.20	2.30	2.30	"

*sans sens **avec sens ***avec ou sans sens

*sin pelusa **con pelusa ***sin o con pelusa