

U.S. \$25.00 CAN. \$35.00 ● RED **S**

V9264

VERY EASY/TRÈS FACILE

MISSES'/MISSES' PETITE DRESS: Close-fitting dress has front and back princess seams and length variations.

Combinations: **A5**(6-8-10-12-14), **E5**(14-16-18-20-22)

FABRICS: Four-way Stretch Knits (75%): Cotton Spandex, Rayon Spandex, Stretch Velvet.
Unsuitable for obvious diagonals.

*With Nap.

SIZES	6	8	10	12	14	16	18	20	22
A 60**	2½	2½	2¼	2¼	2½	2½	2¾	2¾	27
B 60**	4	4	4	4	4	4	4	4	4

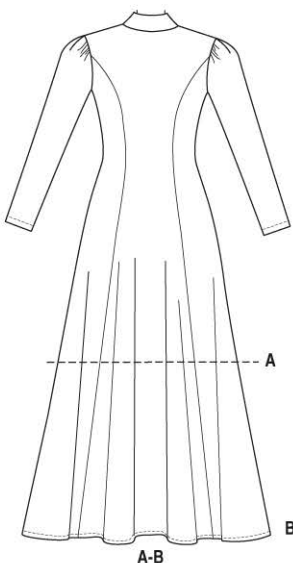
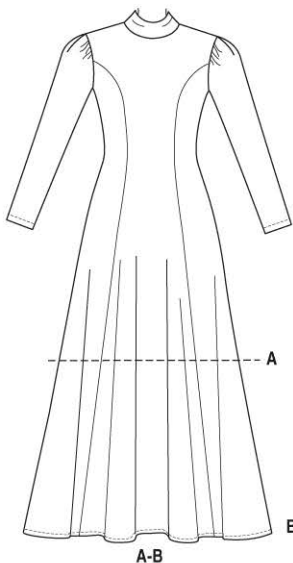
ROBE (J. femme/Petite J. femme): Robe moulante à coutures princesse devant et dos et variations de longueur.

Séries: **A5**(6-8-10-12-14), **E5**(14-16-18-20-22)

TISSUS: Tricot extensibles dans les quatre sens (75%): Coton Spandex, Rayonne Spandex, Velours extensible. Grandes diagonales ne conviennent pas.

*Avec Sens.

TAILLES	6	8	10	12	14	16	18	20	22
A 150cm*	2.0	2.0	2.1	2.1	2.4	2.4	2.6	2.6	2.7
B 150cm*	3.7	3.7	3.7	3.7	3.7	3.7	3.7	3.7	3.7



To Here (75%)
jusqu'ici (75%)

4" of crosswise and lengthwise folded knit must **STRETCH** from here
10 cm de tricot plié sur le travers doivent s'étirer d'ici

