

U.S. \$27.50 CAN. \$35.00 ● RED **S**

V9274

VERY EASY/TRÈS FACILE

MISSES' JACKET AND PANTS: Loose-fitting, lined jacket has side seam pockets and length variations. Straight leg pants have elasticized waist.

VESTE ET PANTALON (J. femme): Veste ample, doublée à coutures côté devant et variations de longueur. Pantalon à jambe droite et taille élastique.

Combinations: **A5**(6-8-10-12-14), **E5**(14-16-18-20-22)

FABRICS: Crepe, Ponte Knit, Rayon Blends, Lightweight Gabardine.

Unsuitable for obvious diagonals.

*With Nap. **Without Nap.

SIZES 6 8 10 12 14 16 18 20 22

A 45"/**	2 3/4	2 3/4	2 3/4	2 3/4	3	3	3 3/8	3 3/4	3 3/4
60"/**	2	2	2	2 1/2	2 1/2	2 1/2	2 1/2	2 3/4	2 3/4

FUSIBLE INTERFACING A - 18", 20" - 2 yds.

B 45"/**	3 1/4	3 1/4	3 1/4	3 3/8	3 3/8	3 3/8	3 1/2	3 3/4	3 3/4
60"/**	2 1/4	2 1/4	2 1/4	2 1/4	2 1/4	2 1/4	2 3/8	2 3/4	2 3/4

FUSIBLE INTERFACING B - 18", 20" - 2 3/8 yds.

LINING A, B - 45" - 1/2 yd.

C 45"/**	2 1/2	2 1/2	2 1/2	2 1/2	2 1/2	2 1/2	2 1/2	2 1/2	2 1/2
60"/**	1 3/8	1 3/8	1 3/8	1 1/2	1 1/2	1 1/2	1 3/4	1 3/4	1 3/4

NOTIONS: A, B: Six 1" Buttons. **C:** 1 1/4 yds. of 3/4" Elastic.

FINISHED GARMENT MEASUREMENTS

Width, each leg

C	19	19 1/2	20	20 1/2	21	21 1/2	22	22 1/2	23
----------	----	--------	----	--------	----	--------	----	--------	----

Back length from base of neck

A	25 1/2	25 3/4	26	26 1/4	26 1/2	26 3/4	27	27 1/4	27 1/2
----------	--------	--------	----	--------	--------	--------	----	--------	--------

B	32 1/2	32 3/4	33	33 1/4	33 1/2	33 3/4	34	34 1/4	34 1/2
----------	--------	--------	----	--------	--------	--------	----	--------	--------

Side length from waist

C	42	42	42	42	42	42	42	42	42
----------	----	----	----	----	----	----	----	----	----

Séries: **A5**(6-8-10-12-14), **E5**(14-16-18-20-22)

TISSUS: Crêpe, Maille de ponte, Rayonne mélangée, Gabardine légère.

Grandes diagonales ne conviennent pas.

*Avec Sens. **Sans Sens.

TAILLES 6 8 10 12 14 16 18 20 22

A 115cm/**	2.6	2.6	2.7	2.7	2.8	2.8	2.9	3.0	3.1
150cm/**	1.9	1.9	1.9	1.9	2.0	2.0	2.0	2.2	2.2

ENTOILAGE THERMOCOILLANT A - 46, 51cm - 1.9m

B 115cm/**	3.0	3.0	3.0	3.1	3.1	3.1	3.2	3.4	3.5
150cm/**	2.1	2.1	2.1	2.1	2.1	2.2	2.3	2.4	2.6

ENTOILAGE THERMOCOILLANT B - 46, 51cm - 2.2m

DOUBLURE A, B - 115cm - 0.5m

C 115cm/**	2.4	2.4	2.4	2.4	2.4	2.4	2.4	2.4	2.4
150cm/**	1.3	1.3	1.3	1.4	1.5	2.2	2.2	2.2	2.2

MERCERIE: A, B: 6 Boutons de 25mm. **C:** 1.2m d'élastique de 2cm.

MESURES DU VÊTEMENT FINI

Largeur, chaque jambe

C	48	50	51	52	54	55	56	57	59
----------	----	----	----	----	----	----	----	----	----

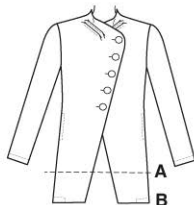
Longueur - dos, votre nuque à l'ourlet

A	65	66	66	67	67	68	69	69	70
----------	----	----	----	----	----	----	----	----	----

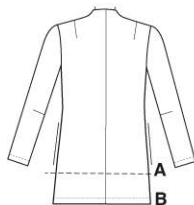
B	83	83	84	85	85	86	87	87	88
----------	----	----	----	----	----	----	----	----	----

Longueur - côté, taille à l'ourlet

C	107	107	107	107	107	107	107	107	107
----------	-----	-----	-----	-----	-----	-----	-----	-----	-----



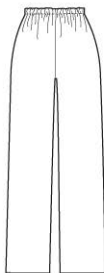
A-B



A-B



C



C



VOGUE PATTERNS, 120 BROADWAY, NEW YORK 10271 © 2017 The McCall Pattern Company, Inc. •

www.voguepatterns.com • PRINTED IN U.S.A. ALL RIGHTS RESERVED. SOLD FOR INDIVIDUAL HOME USE ONLY AND NOT FOR COMMERCIAL OR MANUFACTURING PURPOSES/RESERVE À UN USAGE PERSONNEL.