

V9347 VERY EASY/TRÈS FACILE

MISSES' TOP: Button-front swing tops have raglan sleeves with variations. **B, C:** Button cuff.

Combinations: **Y(XS-S-M), ZZ(L-XL-XXL)**

FABRICS: Broadcloth, Shantung, Sateen.

Unsuitable for obvious diagonals.

*With Nap. **Without Nap.

SIZES	XS	S	M	L	XL	XXL
	4-6	8-10	12-14	16-18	20-22	24-26
A 45"/**	2 ⁷ / ₈	2 ⁷ / ₈	3	3 ¹ / ₈	3 ¹ / ₄	3 ³ / ₈
60"/**	2 ¹ / ₈	2 ¹ / ₄	2 ¹ / ₄	2 ¹ / ₄	2 ³ / ₈	2 ³ / ₈

FUSIBLE INTERFACING A - 18", 20" - 1¹/₂ yds.

B 45"/**	3 ¹ / ₄	3 ¹ / ₄	3 ¹ / ₄	3 ³ / ₈	3 ³ / ₈	3 ¹ / ₂
60"/**	2 ¹ / ₄	2 ¹ / ₄	2 ³ / ₈	2 ³ / ₈	2 ³ / ₈	2 ¹ / ₂
C 45"/**	3	3 ¹ / ₈	3 ¹ / ₄	3 ³ / ₈	3 ¹ / ₂	3 ¹ / ₂
60"/**	2	2 ¹ / ₈	2 ¹ / ₈	2 ¹ / ₂	2 ¹ / ₂	2 ⁵ / ₈

FUSIBLE INTERFACING B, C

18", 20"	1 ⁵ / ₈	1 ⁵ / ₈	1 ³ / ₄	1 ³ / ₄	1 ³ / ₄	1 ³ / ₄
----------	-------------------------------	-------------------------------	-------------------------------	-------------------------------	-------------------------------	-------------------------------

NOTIONS: **A, B, C:** Two Snaps. **A:** Two 1¹/₈" Buttons. **B, C:** Four 1¹/₈" Buttons.

FINISHED GARMENT MEASUREMENTS

Width, lower edge

A, B, C	46	48	51 ¹ / ₂	55 ¹ / ₂	59 ¹ / ₂	63 ¹ / ₂
----------------	----	----	--------------------------------	--------------------------------	--------------------------------	--------------------------------

Back length from base of neck

A, B, C	24 ¹ / ₂	25	25 ¹ / ₂	26	26 ¹ / ₂	27
----------------	--------------------------------	----	--------------------------------	----	--------------------------------	----

HAUT (J. femme): Haut trapèze boutonné devant à variations de manche raglan. **B, C:** Poignet boutonné.

Séries: **Y(TP-P-M), ZZ(G-TG-TTG)**

TISSUS: Toile, Shantung, Satinette.

Grandes diagonales ne conviennent pas.

*Avec Sens. **Sans Sens.

TAILLES	TP	P	M	G	TG	TTG
	4-6	8-10	12-14	16-18	20-22	24-26
A 115cm*/**	2.7	2.7	2.8	2.9	3.0	3.1
150cm*/**	2.0	2.1	2.1	2.1	2.2	2.2

ENTOILAGE THERMOCOLLANT A - 46, 51cm - 1.4m

B 115cm*/**	3.0	3.0	3.0	3.1	3.1	3.2
150cm*/**	2.1	2.1	2.2	2.2	2.2	2.3
C 115cm*/**	2.8	2.9	3.0	3.1	3.2	3.2
150cm*/**	1.9	2.0	2.0	2.3	2.3	2.4

ENTOILAGE THERMOCOLLANT B, C

46, 51cm	1.5	1.5	1.6	1.6	1.6	1.6
----------	-----	-----	-----	-----	-----	-----

MERCERIE: **A, B, C:** 2 Boutons-pression. **A:** 2 Boutons de 28mm. **B, C:** 4 Boutons de 28mm.

ME SURES DU VÊTEMENT FINI

Largeur à l'ourlet

A, B, C	117	122	131	141	151	161
----------------	-----	-----	-----	-----	-----	-----

Longueur - dos, votre nuque à l'ourlet

A, B, C	62	64	65	66	67	69
----------------	----	----	----	----	----	----



A



B



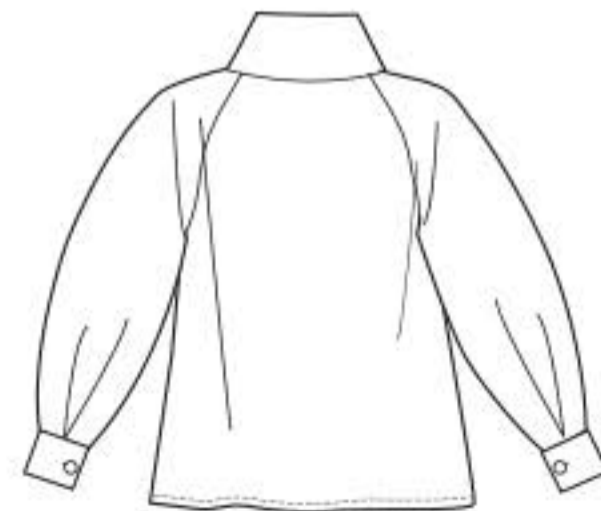
C



A



B



C

